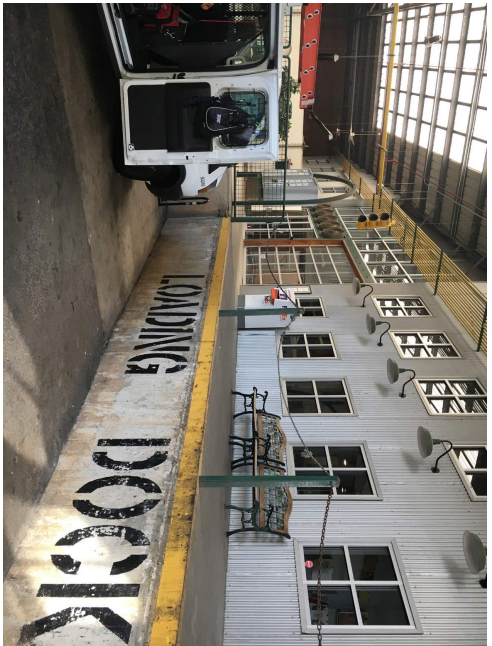




**A S A N A**  
**PARTNERS**

112 KROG STREET  
ATLANTA, GA 30307  
UDC APPLICATION  
06.18.2019

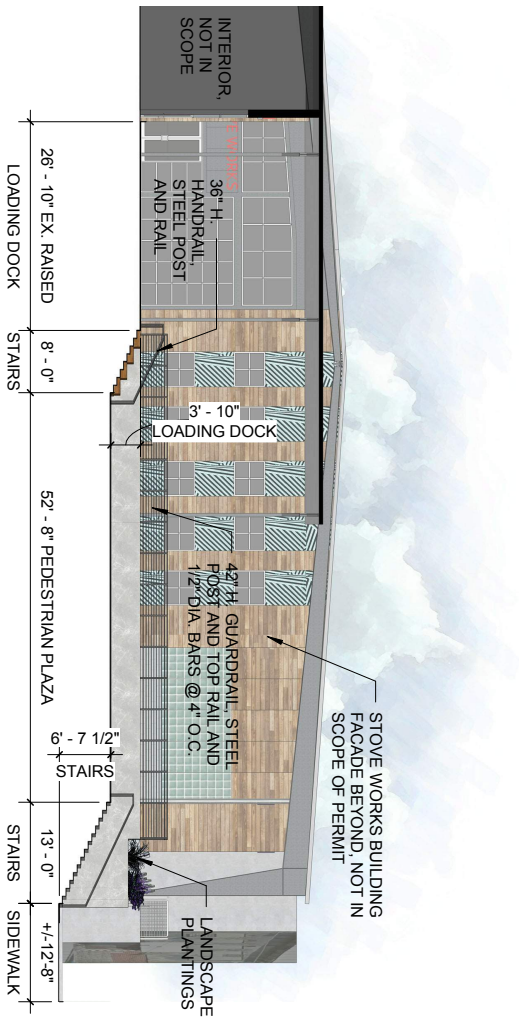
**ASD | SKY**



EXISTING CONDITIONS  
06.18.2019







SOUTH ELEVATION  
06.18.2019



PERSPECTIVE VIEW  
06.18.2019



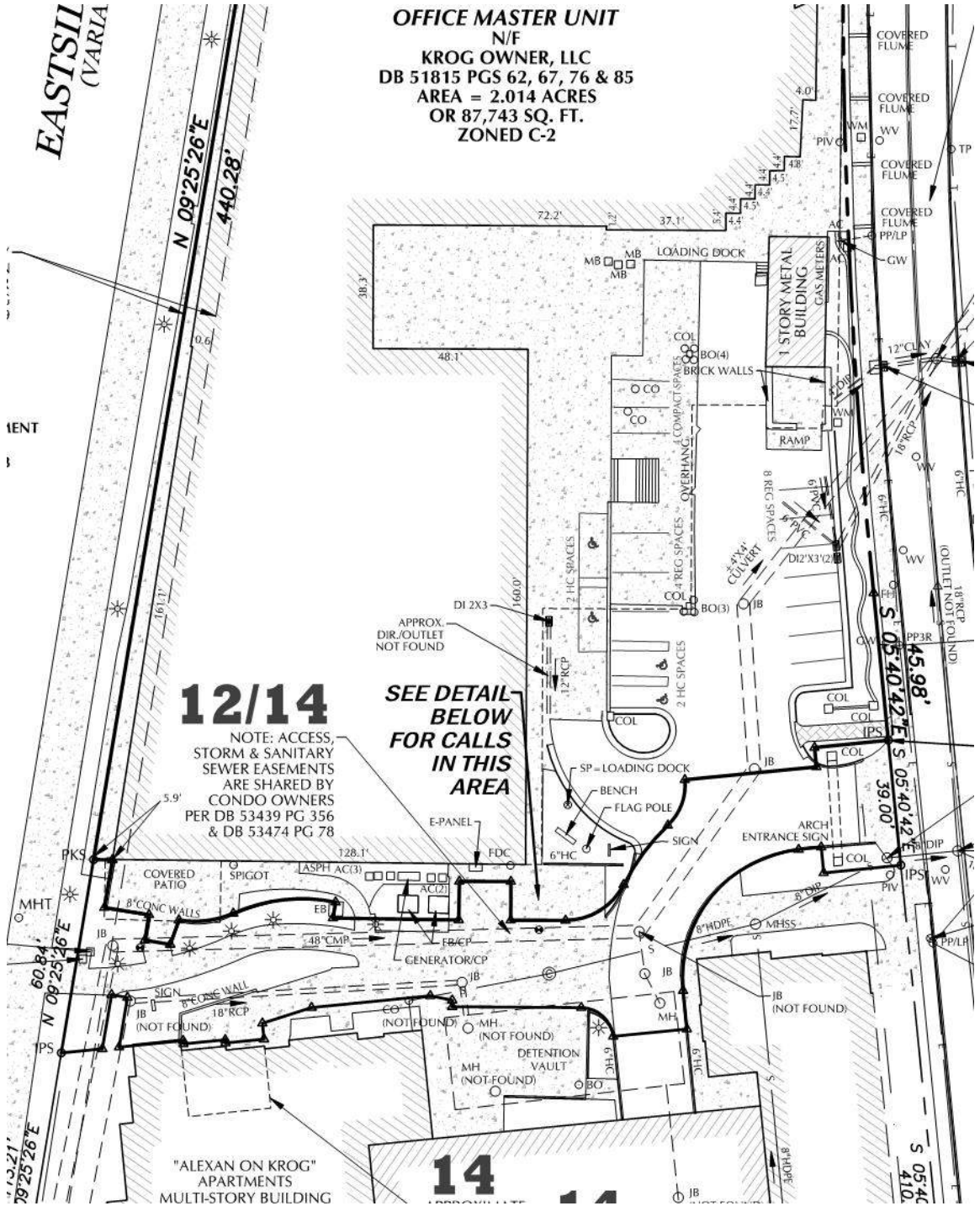








EXISTING PLAN  
06.18.2019



**OFFICE MASTER UNIT**  
N/F  
KROG OWNER, LLC  
DB 51815 PGS 62, 67, 76 & 85  
AREA = 2.014 ACRES  
OR 87,743 SQ. FT.  
ZONED C-2

**12/14**

NOTE: ACCESS, STORM & SANITARY SEWER EASEMENTS ARE SHARED BY CONDO OWNERS PER DB 53439 PG 356 & DB 53474 PG 78

SEE DETAIL BELOW FOR CALLS IN THIS AREA

"ALEXAN ON KROG" APARTMENTS MULTI-STORY BUILDING

**14**



