

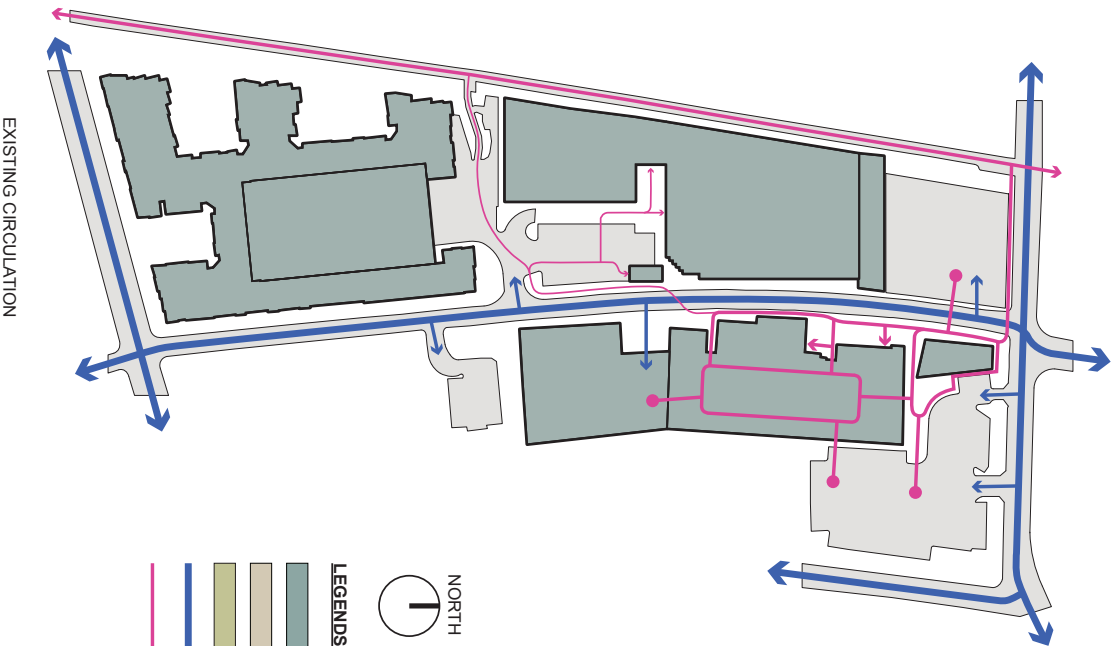
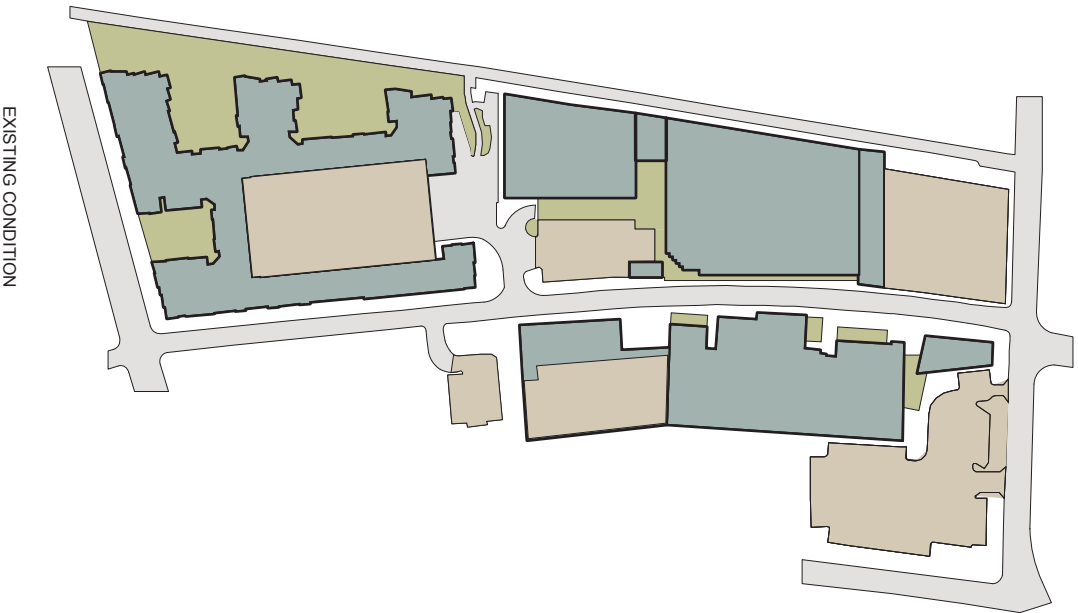


**A S A N A**  
**PARTNERS**

KROG STREET MARKET  
ATLANTA, GA 30307

INMAN PARK NEIGHBORHOOD ASSOCIATION MEETING  
09.18.2019

ASD | SKY

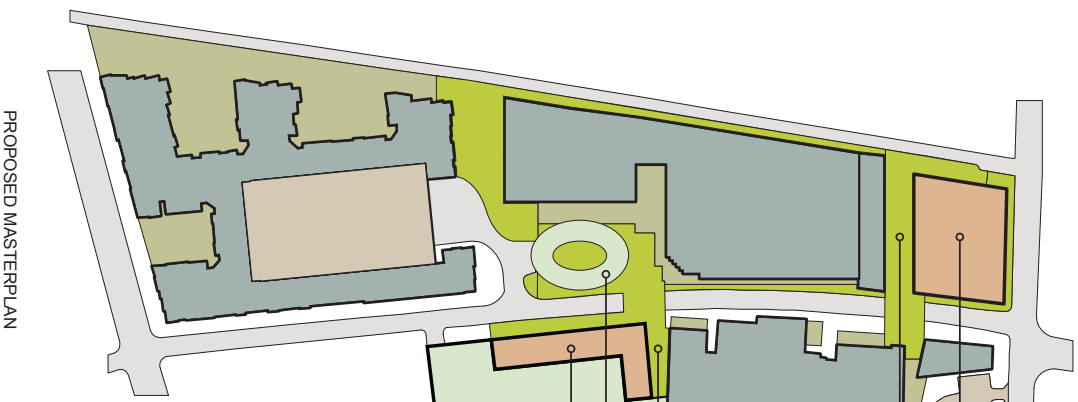
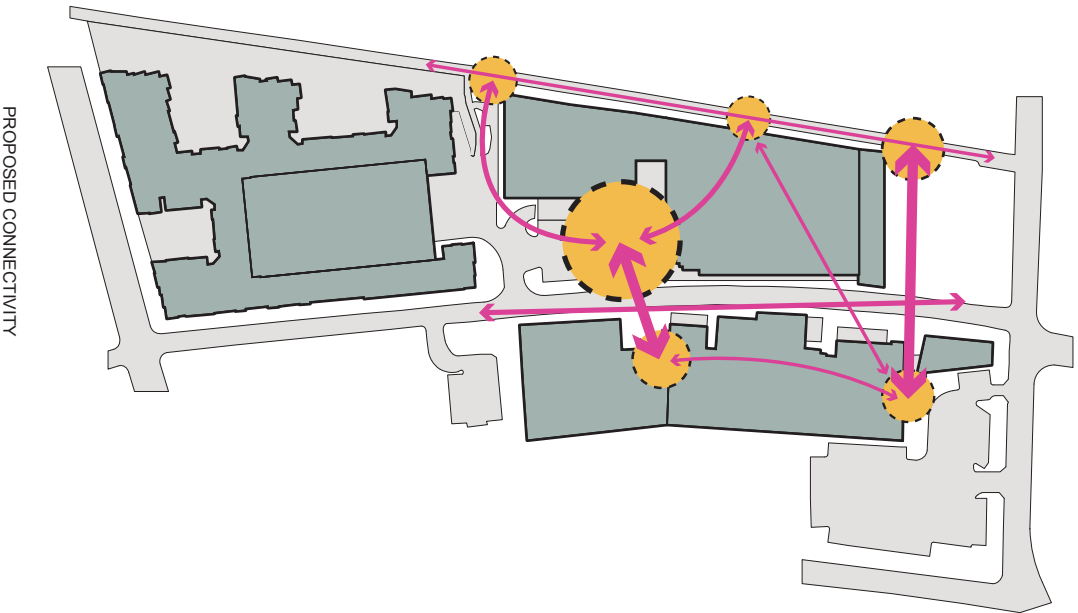


NORTH  
SCALE: 1"=150'

- LEGENDS:**
- EXISTING BUILDINGS
  - EXISTING PARKING
  - EXISTING PATIO/OPEN SPACE
  - EXISTING VEHICULAR CIRCULATION
  - EXISTING PEDESTRIAN CIRCULATION

EXISTING CONDITION DIAGRAMS

09.18.2019



- NORTH
- SCALE: 1"=150'
- LEGENDS:**
- EXISTING BUILDINGS
  - PROPOSED BUILDING
  - EXISTING PARKING
  - PROPOSED PARKING
  - EXISTING PATIO/OPEN SPACE
  - PROPOSED PATIO/OPEN SPACE
  - PROPOSED NODE
  - CONNECTION

- NEW GRAVEL LOT BUILDING
- NEW BELTLINE PLAZA
- NEW POCKET PARK
- NEW MOTOR COURT/PATIO
- NEW WAREHOUSE LOT BUILDING/PARKING

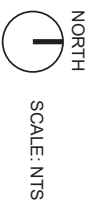


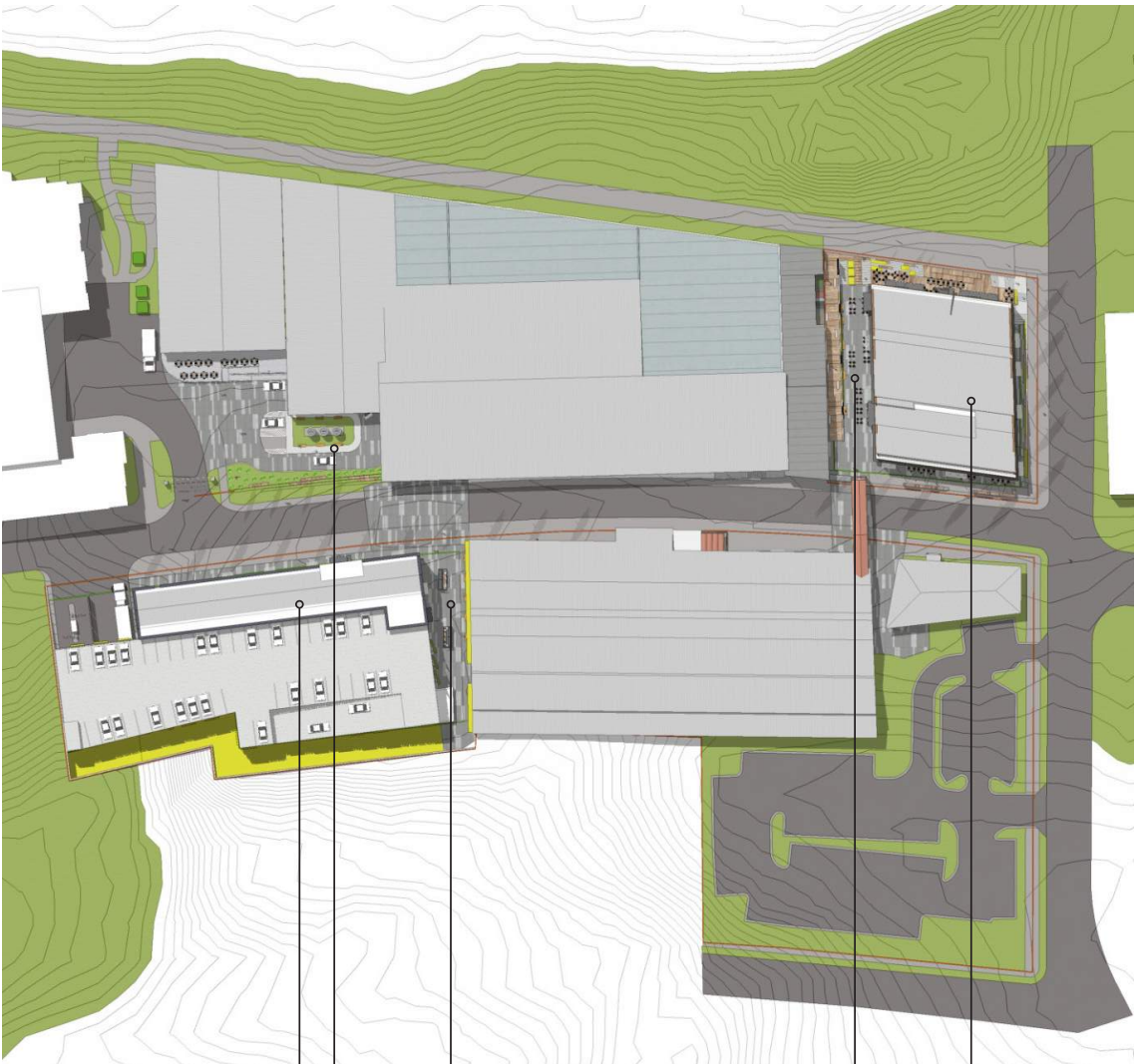
EXISTING SITE PLAN  
09.18.2019

NORTH  
SCALE: NTS



PROPOSED SITE PLAN  
09.18.2019





NEW GRAVEL LOT BUILDING

NEW BELTLINE PLAZA

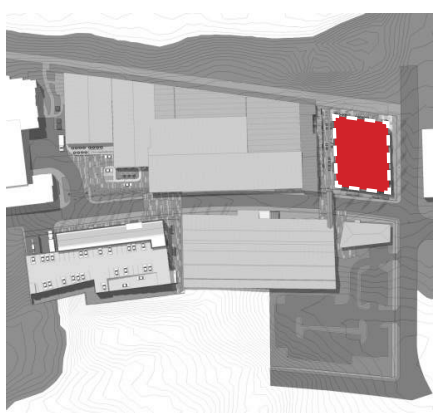
NEW POCKET PARK

NEW VEHICULAR PLAZA/PATIO  
 NEW BUTLER BUILDING/PARKING



SCALE: NTS

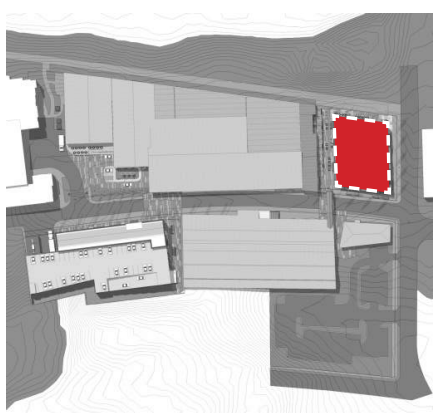
ENLARGED SITE PLAN  
 09.18.2019



SCALE: 1/32" = 1'-0"

- RETAIL/RESTAURANT  
+/-10,525 SF
  - OFFICE  
NONE
  - COMMON AREA  
+/-1,882 SF
  - PARKING  
NONE
- TOTAL GSF: +/-12,407 SF
- FLOOR TO FLOOR HEIGHT:  
 RETAIL: 14'-0"  
 OFFICE: 14'-0"

GRAVEL LOT BUILDING - LEVEL 1  
 09.18.2019



NORTH

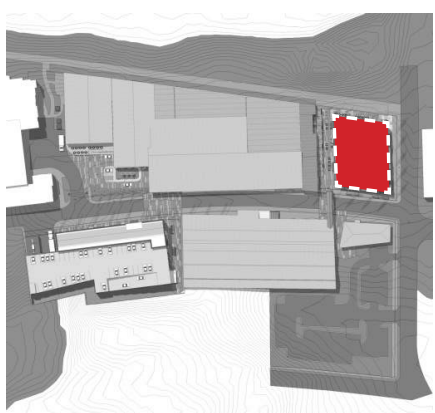
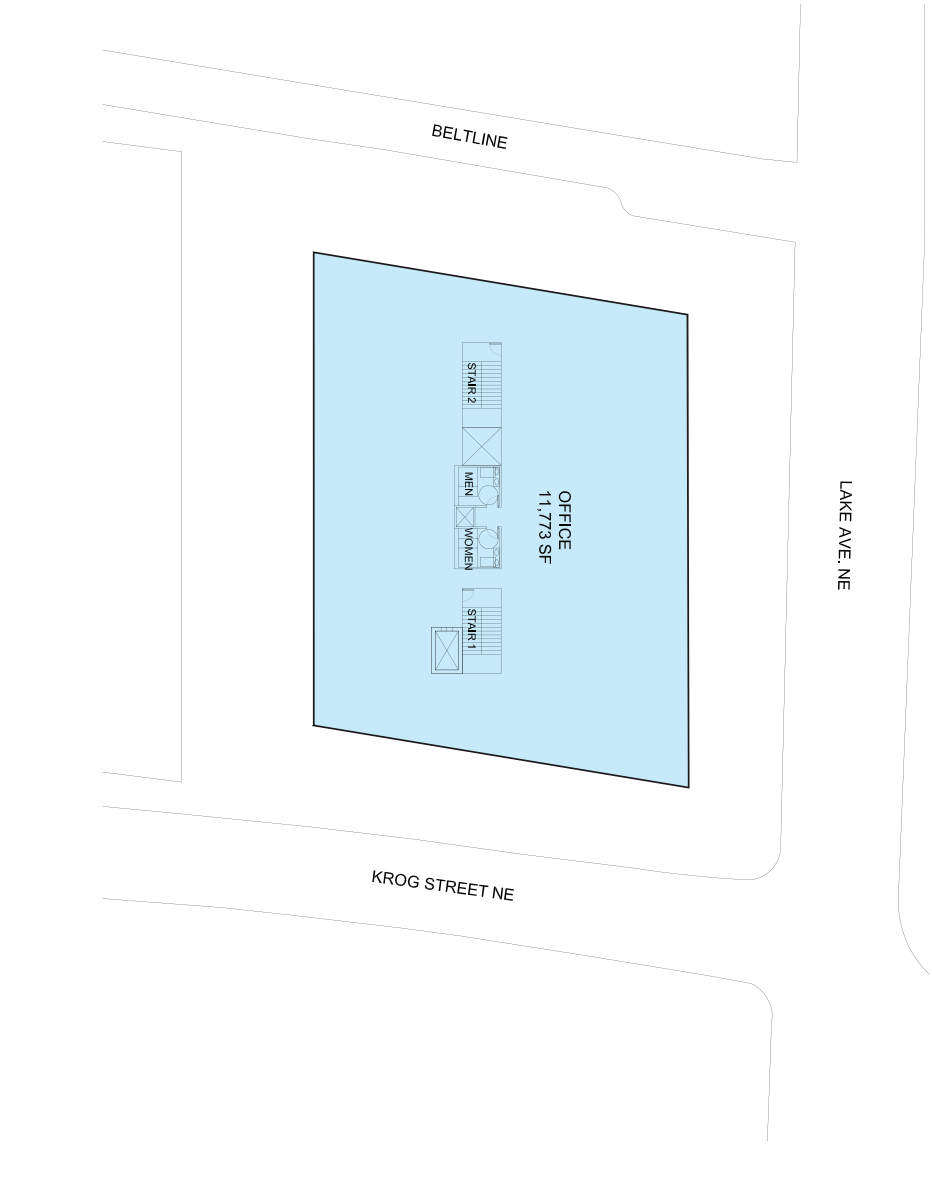


SCALE: 1/32" = 1'-0"

- RETAIL/RESTAURANT  
+/-3,859 SF
  - OFFICE  
+/-6,278 SF
  - COMMON AREA  
+/-1,480 SF
  - PARKING  
NONE
- TOTAL GSF: +/-11,617 SF
- FLOOR TO FLOOR HEIGHT:  
 RETAIL: 14'-0"  
 OFFICE: 14'-0"

GRAVEL LOT BUILDING - LEVEL 2  
 09.18.2019





NORTH

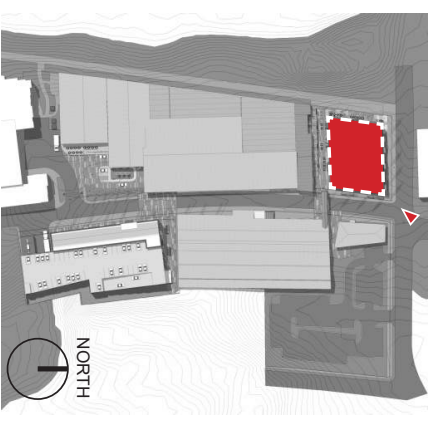


SCALE: 1/32" = 1'-0"

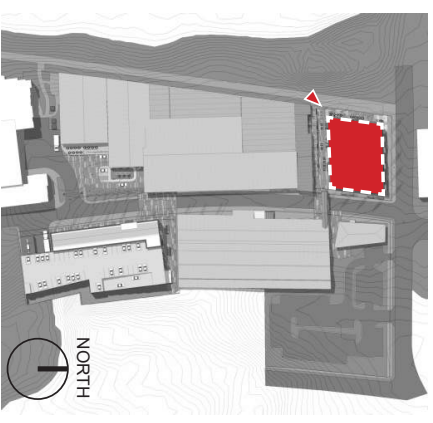
- RETAIL/RESTAURANT  
NONE
  - OFFICE  
+/-11,773 SF
  - COMMON AREA  
NONE
  - PARKING  
NONE
- TOTAL GSF: +/-11,773 SF
- TOTAL DEVELOPMENT:  
 TOTAL GSF: +/-36,797 SF  
 TOTAL RETAIL/RESTAURANT: +/-14,384 SF  
 TOTAL OFFICE: +/-18,061 SF  
 TOTAL COMMON AREA: +/-3,362 SF  
 TOTAL PARKING: NONE (SHARED)

GRAVEL LOT BUILDING - LEVEL 3

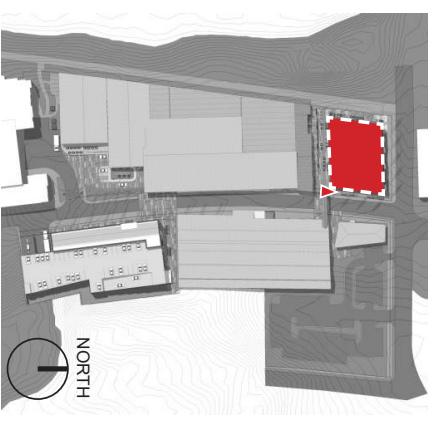
09.18.2019



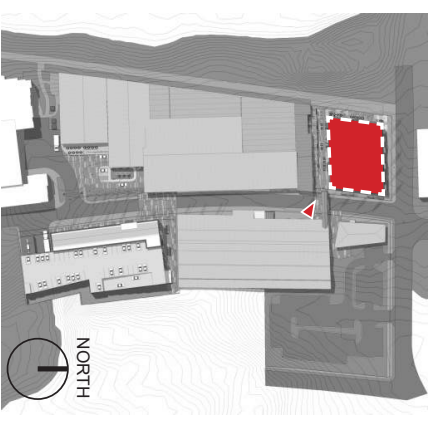
GRAVEL LOT BUILDING DESIGN  
09.18.2019



GRAVEL LOT BUILDING DESIGN  
09.18.2019



GRAVEL LOT BUILDING DESIGN  
09.18.2019

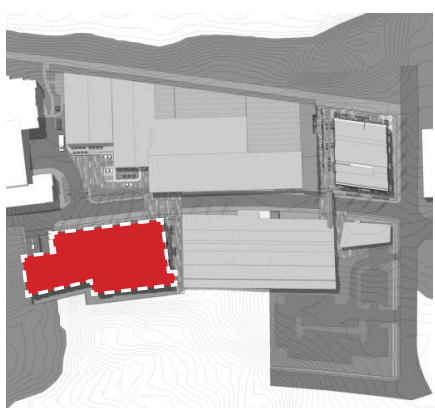
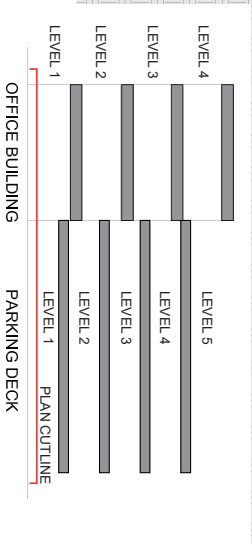
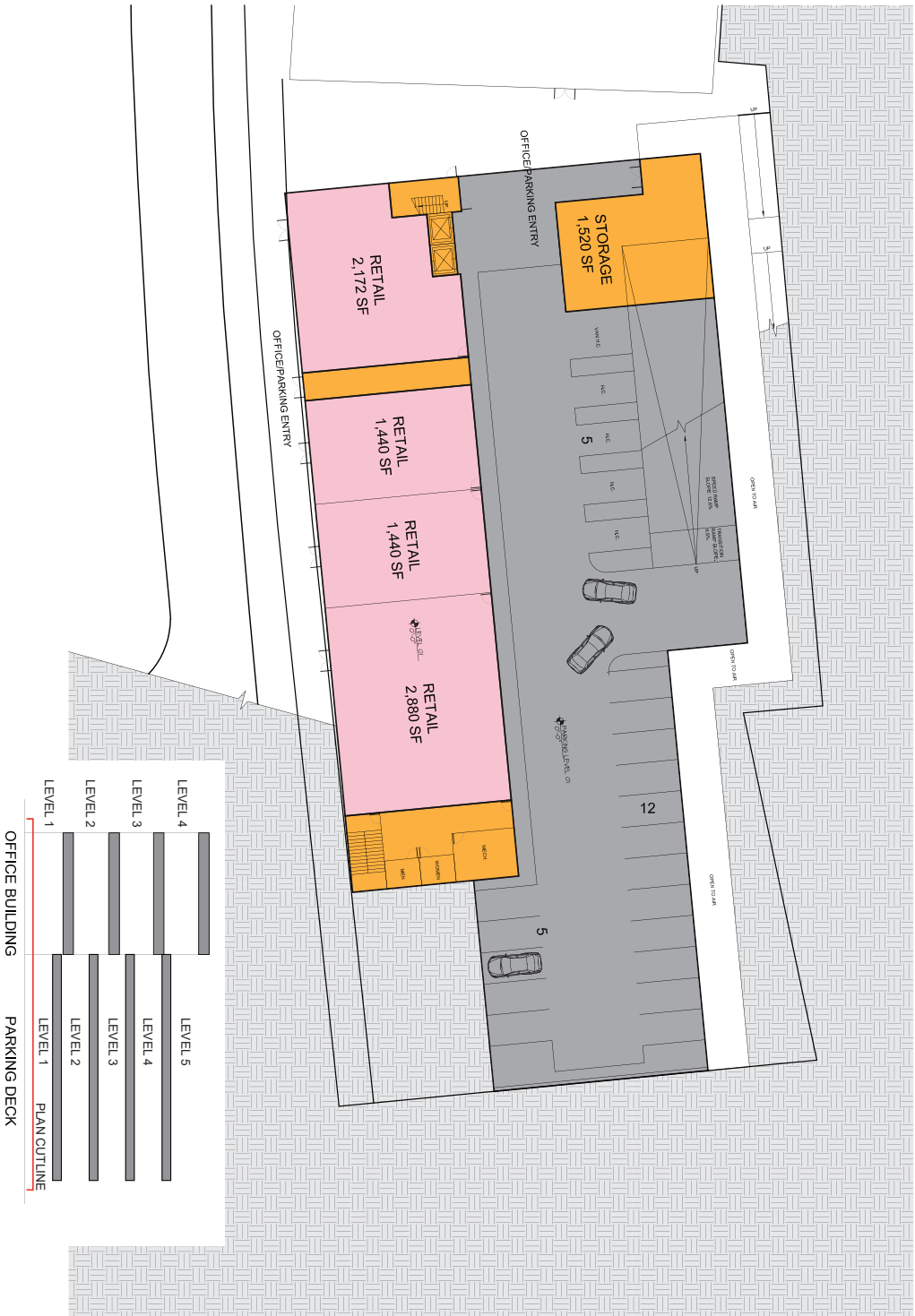


GRAVEL LOT BUILDING DESIGN  
09.18.2019



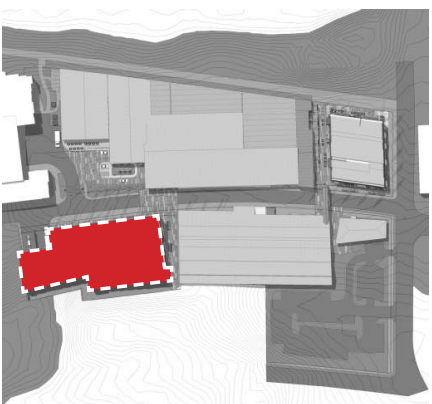
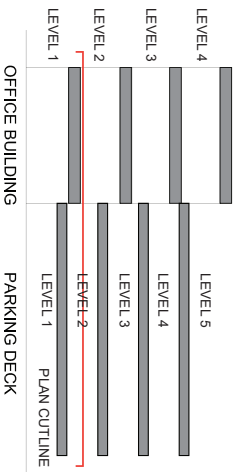
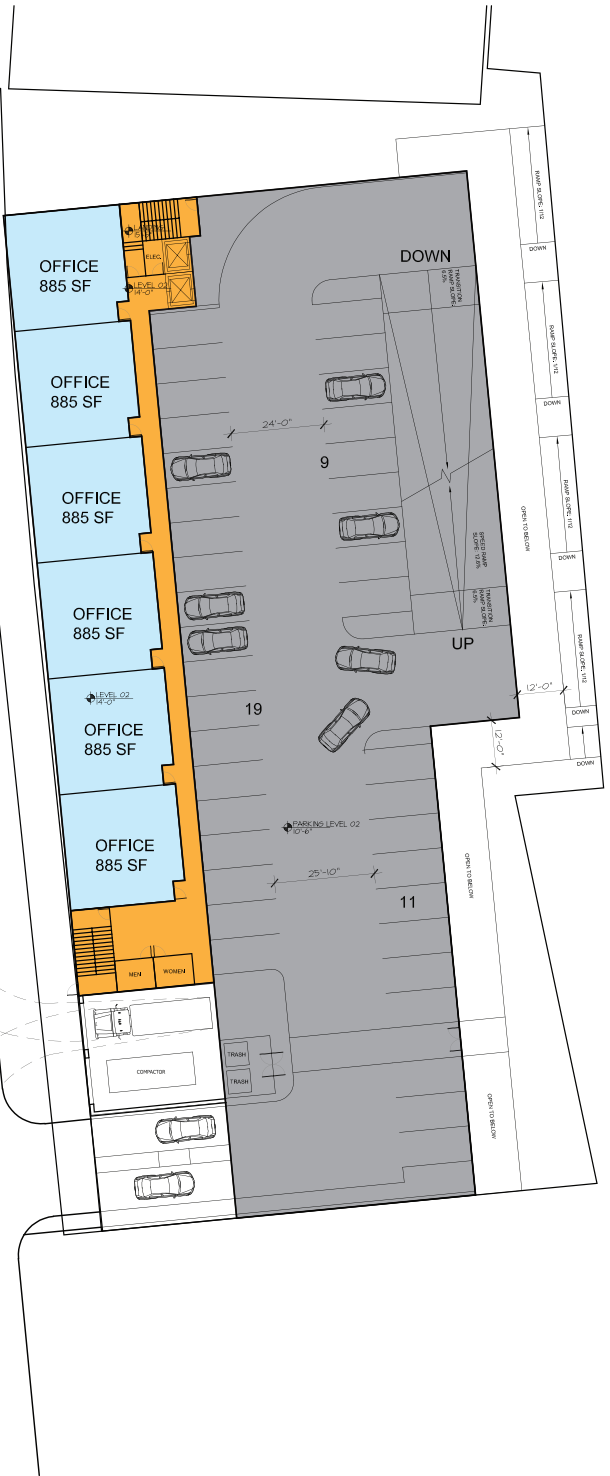
BUTLER BUILDING - OFFICE LEVEL 1 & PARKING LEVEL 1

09.18.2019



SCALE: 1/32" = 1'-0"

- RETAIL/RESTAURANT  
+/-7,932 SF
  - OFFICE  
NONE
  - COMMON AREA  
+/-3,289 SF
  - PARKING  
22 SPACES
- LEVEL 1 TOTAL GSF: +/-11,221 SF
- FLOOR TO FLOOR HEIGHT:  
 LEVEL 1: 14'-0"  
 LEVEL 2-4: 12'-0"

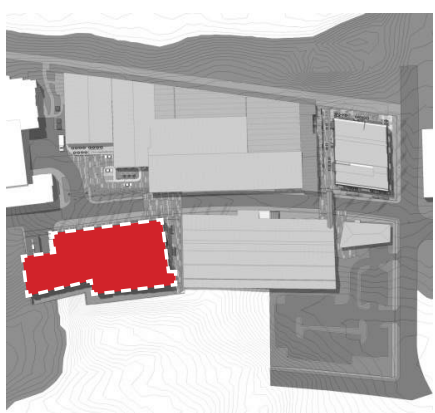
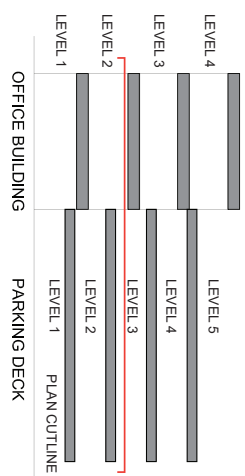


SCALE: 1/32" = 1'-0"

- RETAIL/RESTAURANT
  - NONE
  - OFFICE
  - COMMON AREA
  - PARKING
- LEVEL 2 TOTAL GSF: +/- 7,439 SF
- FLOOR TO FLOOR HEIGHT:
- LEVEL 1: 14'-0"
  - LEVEL 2-4: 12'-0"

BUTLER BUILDING - OFFICE LEVEL 2 & PARKING LEVEL 2  
09.18.2019





SCALE: 1/32" = 1'-0"

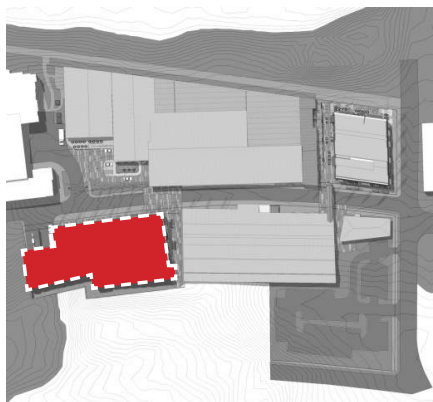
- RETAIL/RESTAURANT
  - NONE
  - OFFICE
  - SEE OFFICE LEVEL 2
  - COMMON AREA
  - SEE OFFICE LEVEL 2
  - PARKING
  - 46 SPACES
- TOTAL GSF: SEE OFFICE LEVEL 2
- FLOOR TO FLOOR HEIGHT:
- LEVEL 1: 14'-0"
  - LEVEL 2-4: 12'-0"

BUTLER BUILDING - OFFICE LEVEL 2 & PARKING LEVEL 3  
09.18.2019



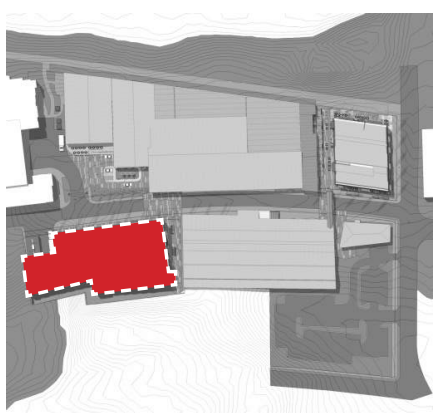
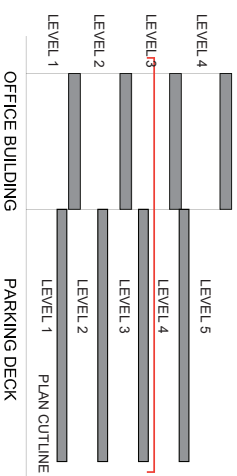


BUTLER BUILDING - OFFICE LEVEL 3 & PARKING LEVEL 3  
09.18.2019



SCALE: 1/32" = 1'-0"

- RETAIL/RESTAURANT
  - NONE
  - OFFICE
  - COMMON AREA
  - PARKING
- LEVEL 3 TOTAL GSF: +/- 7,439 SF  
SEE PARKING LEVEL 3
- FLOOR TO FLOOR HEIGHT:  
LEVEL 1: 14'-0"  
LEVEL 2-4: 12'-0"

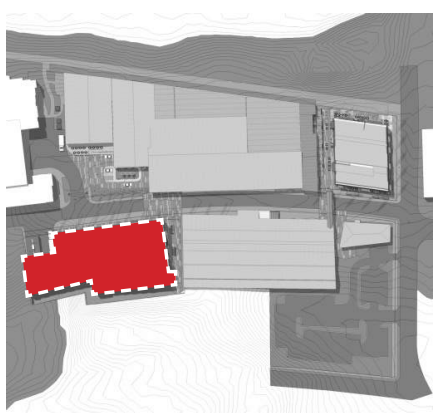


SCALE: 1/32"=1'-0"

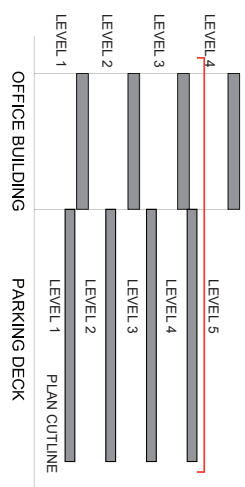
- RETAIL/RESTAURANT
  - NONE
  - OFFICE
  - SEE OFFICE LEVEL 3
  - COMMON AREA
  - SEE OFFICE LEVEL 3
  - PARKING
  - 46 SPACES
- TOTAL GSF: SEE OFFICE LEVEL 3
- FLOOR TO FLOOR HEIGHT:
- LEVEL 1: 14'-0"
  - LEVEL 2-4: 12'-0"

BUTLER BUILDING - OFFICE LEVEL 3 & PARKING LEVEL 4

09.18.2019

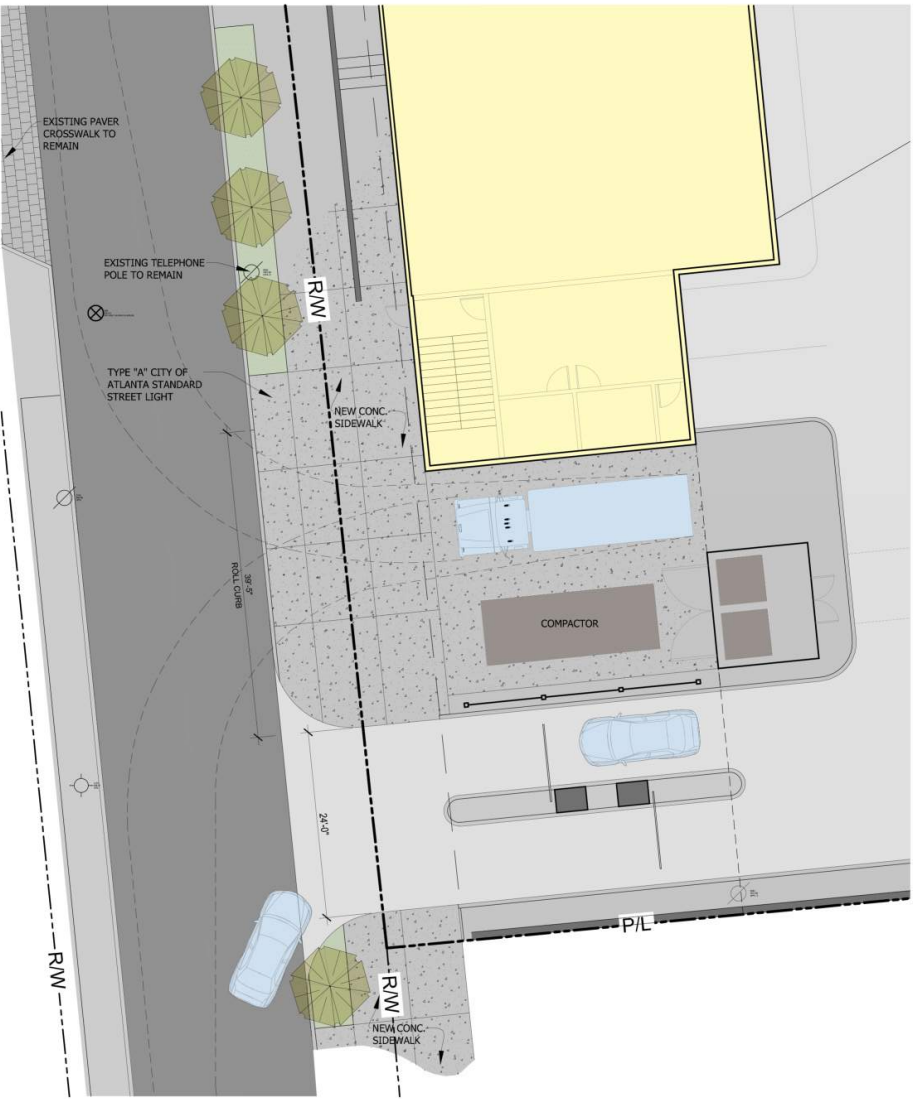


SCALE: 1/32"=1'-0"

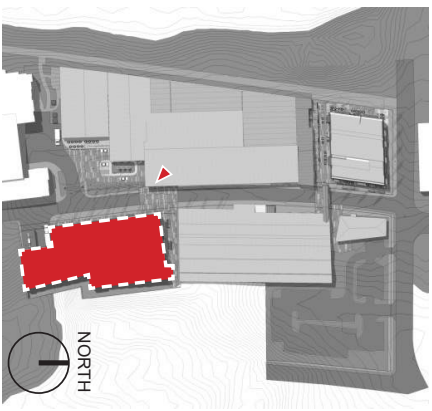


- RETAIL/RESTAURANT
  - NONE
  - OFFICE
  - COMMON AREA
  - PARKING
- TOTAL GSF: +17,439 SF
- TOTAL DEVELOPMENT:  
 TOTAL GSF: +33,538 SF  
 TOTAL RETAIL/RESTAURANT: +7,932 SF  
 TOTAL OFFICE: +15,930 SF  
 TOTAL COMMON AREA: +9,676 SF  
 TOTAL PARKING: 202 SPACES

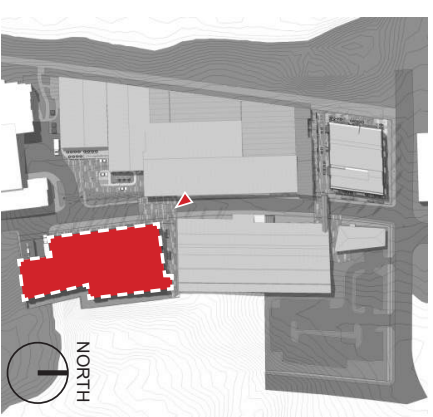
BUTLER BUILDING - OFFICE LEVEL 4 & PARKING LEVEL 5  
 09.18.2019



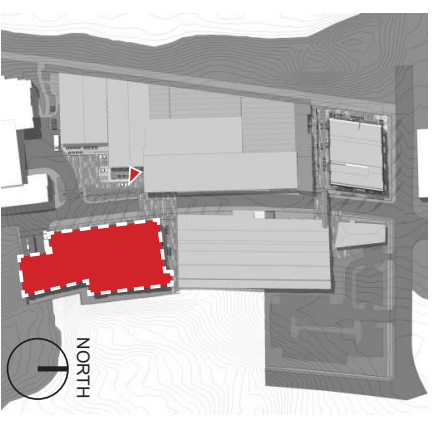
BUTLER BUILDING - LOADING AREA  
09.18.2019



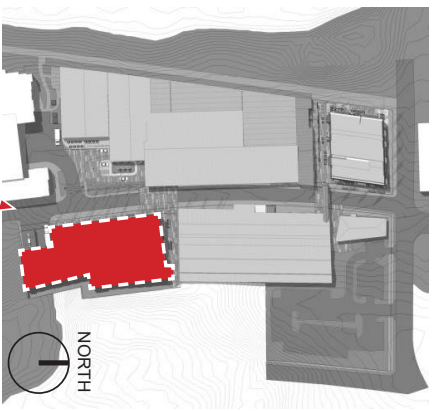
BUTLER BUILDING DESIGN  
09.18.2019



BUTLER BUILDING DESIGN  
09.18.2019

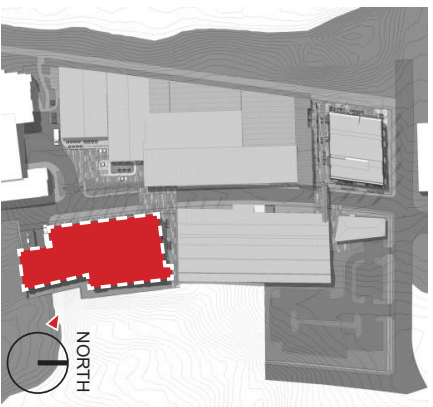


BUTLER BUILDING DESIGN  
09.18.2019

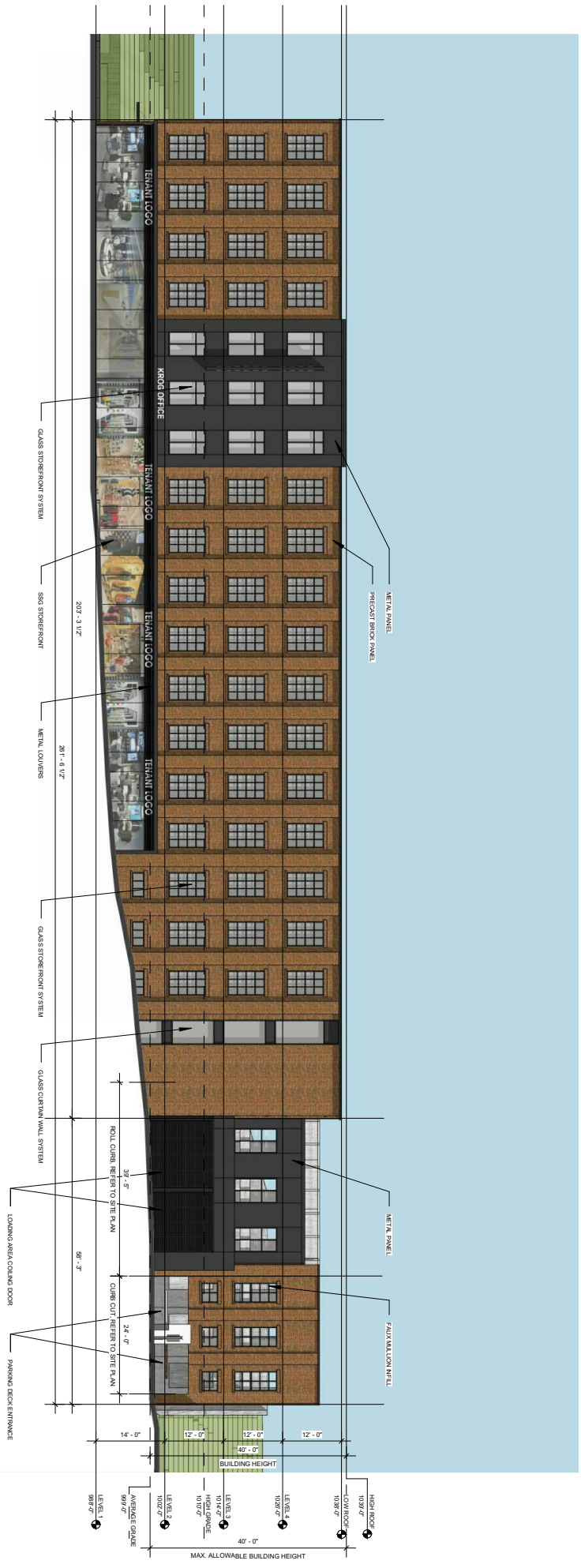


BUTLER BUILDING DESIGN  
09.18.2019

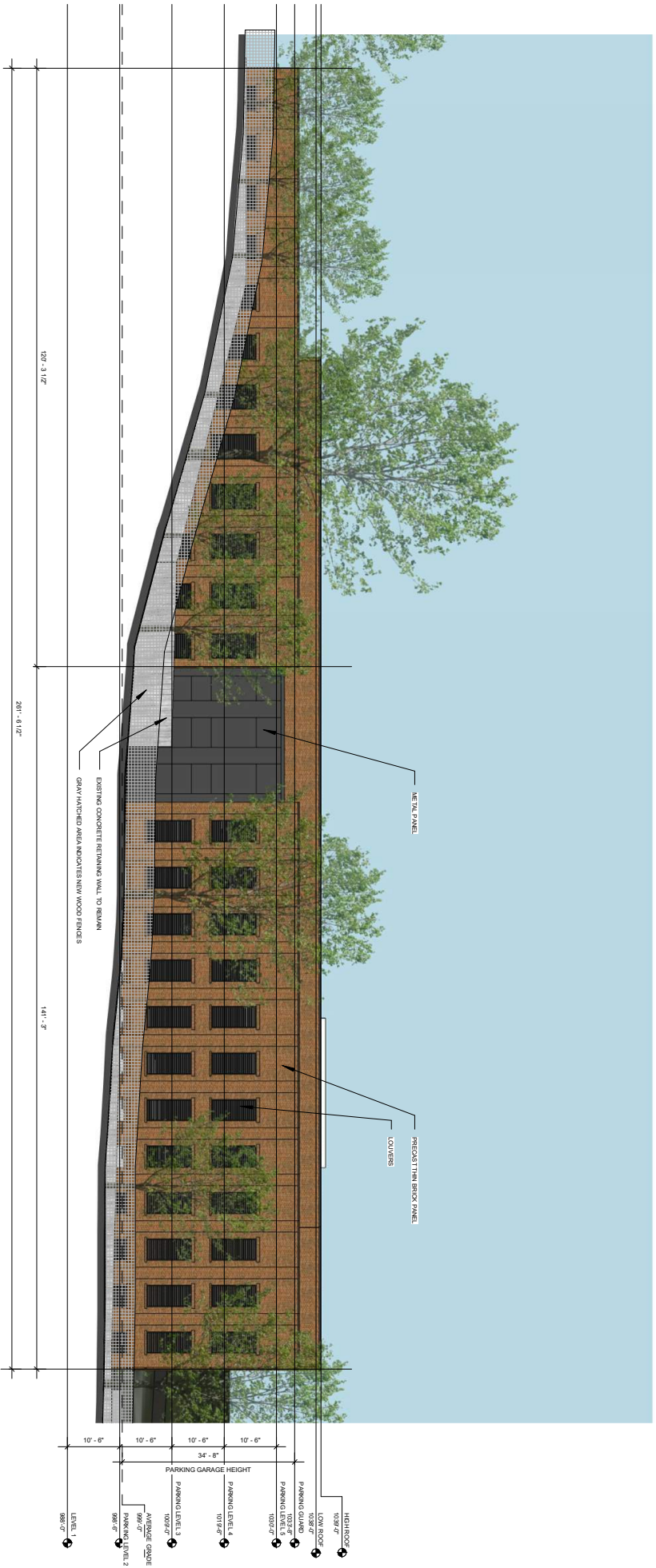




BUTLER BUILDING DESIGN  
09.18.2019

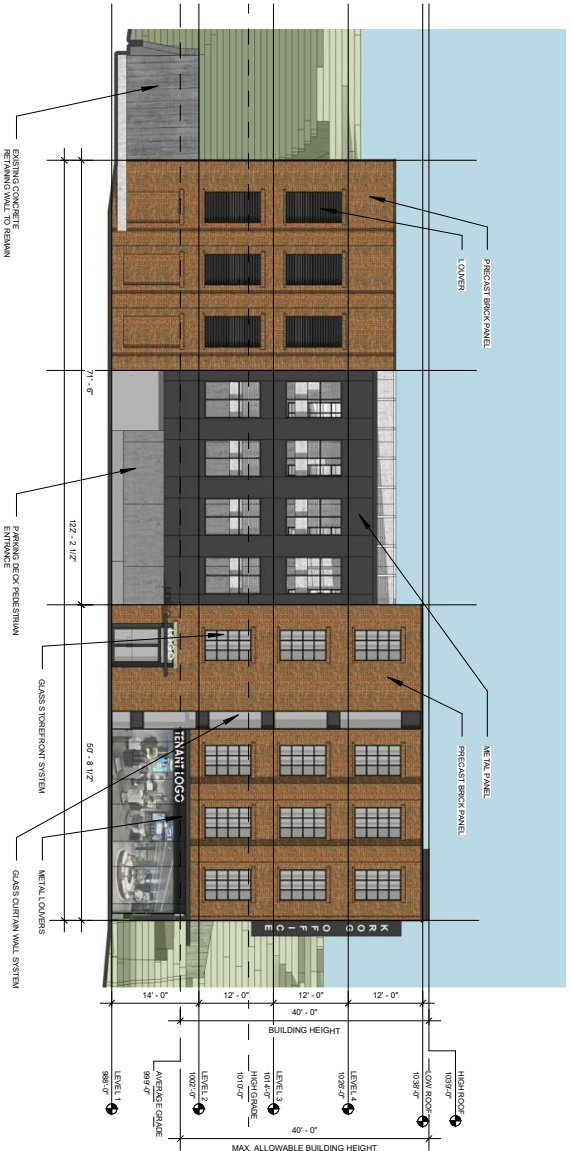


BUTLER BUILDING WEST ELEVATION  
09.18.2019



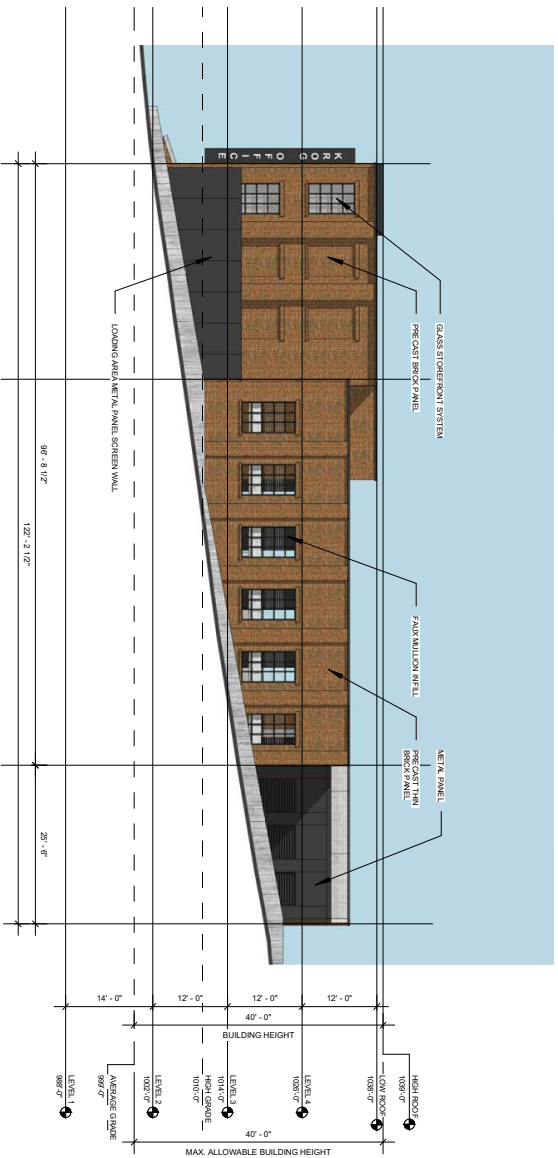
SCALE: 1" = 20'-0"

BUTLER BUILDING EAST ELEVATION  
09.18.2019



SCALE: 1" = 20'-0"

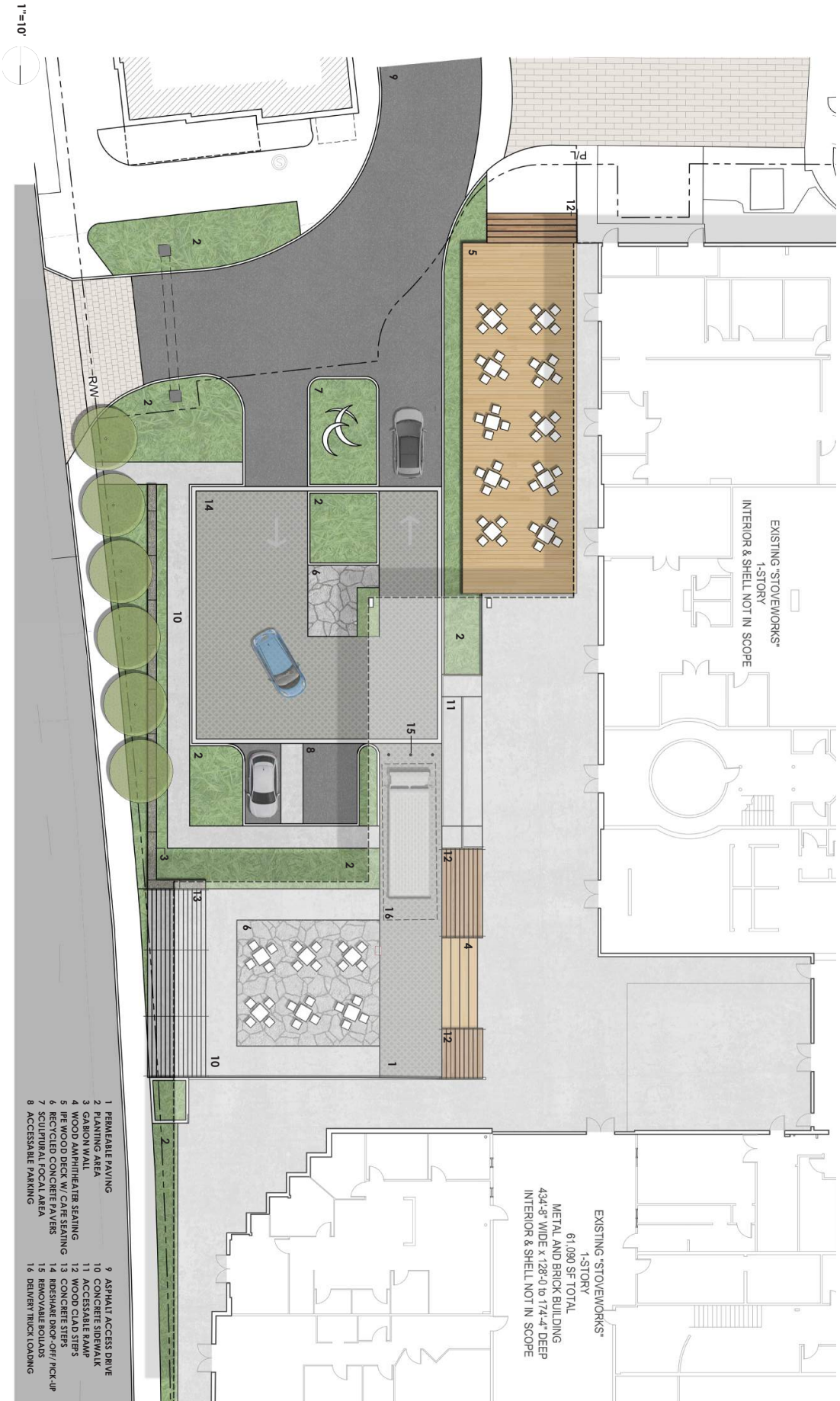
BUTLER BUILDING NORTH ELEVATION  
09.18.2019



SCALE: 1" = 20'-0"

BUTLER BUILDING SOUTH ELEVATION

09.18.2019

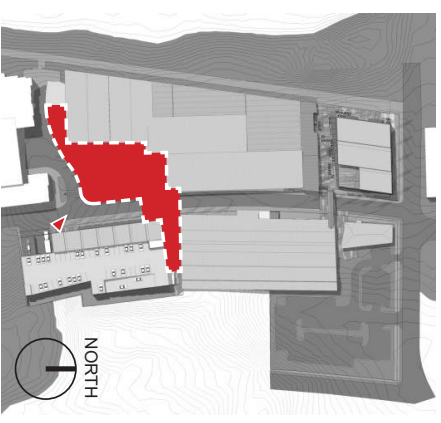


EXISTING "STOVEWORKS"  
1-STORY  
INTERIOR & SHELL NOT IN SCOPE

EXISTING "STOVEWORKS"  
1-STORY  
61,090 SF TOTAL  
METAL AND BRICK BUILDING  
434'-8" WIDE x 128'-0" to 174'-4" DEEP  
INTERIOR & SHELL NOT IN SCOPE

- 1 PERMEABLE PAVING
- 2 PLANTING AREA
- 3 GABION WALL
- 4 WOOD AMPHIHEATER SEATING
- 5 IPE WOOD DECK W/ CAFE SEATING
- 6 RECYCLED CONCRETE PAVERS
- 7 SCULPTURAL FOCAL AREA
- 8 ACCESSIBLE PARKING
- 9 ASPHALT ACCESS DRIVE
- 10 CONCRETE SIDEWALK
- 11 ACCESSIBLE RAMP
- 12 WOOD CLAD STEPS
- 13 CONCRETE STEPS
- 14 RIDE/SHARE DRØ-ØFF / PØCK-ØP
- 15 REMOVEABLE BØULDS
- 16 DELIVERY TRØCK LOADING

VEHICULAR PLAZA PLAN  
09.18.2019



VEHICULAR PLAZA DESIGN  
09.18.2019