

THE Inman Park Advocator



Atlanta's Small Town Downtown News • Newsletter of Inman Park Neighborhood Association

advocator@inmanpark.org • inmanpark.org • 245 North Highland Avenue NE • Suite 230-401 • Atlanta 30307

February 2023

Volume 51 • Issue 2

President's Message

Love That IPNA Board

By Cristy Lenz • President@inmanpark.org

Serving on the Board of the Inman Park Neighborhood Association is a privilege. As President, I oversee the Nominating Committee that helps select the next slate of officers that will fill the two-year terms of those rolling off the board. Half of our 8-member board rolls off each year. Per our By-laws no one may serve more than one consecutive term in the same role.

This year we're looking for neighbors to fill the VP of Public Safety, VP of Historic Preservation, Treasurer, and President-Elect roles. Here's a little more about each position. I'll not go into detail, but the position description is a broad overview. Each position is nuanced in its own way.

VP of Public Safety is charged with overseeing the IPNA Security Patrol, ensuring the officers are paid in conjunction with the Treasurer, keeping in contact with IPNA's liaison Seg. Tom Sokup and the Zone 6 Commander, and ordering security yard signs for IPNA Security Patrol Members.

VP of Historic Preservation is one of the most demanding and important board positions. The VP of Historic Preservation is charged with helping to uphold our Historic Regulations, working with the Urban Design Commission and homeowners who would like to update their properties and developers looking to expand into the neighborhood. The new Krog Street development is an excellent example of how the VP of Historic Preservation and the Historic Preservation Committee worked with Asana to expand Krog Street Market in a way that worked within our guidelines and helped our neighbors. Having a background in Architecture or Planning is helpful but not required. If you're interested and willing to learn, we have a committee that will support your efforts.

The Treasurer is tasked with keeping track of the budget and paying our bills monthly. They oversee the checking account and work with our accountant to make sure our tax form is filed. They do the budget, with input from our membership and committees, each year. They work with the festival treasurer as needed. You don't need to be an accountant to be our treasurer, but a love of numbers is helpful.

President-Elect turns into a 3-year term. The first year you sit in on board meetings but are not a voting member of the board. This is to ensure a smooth transition when

the President rolls off the following year, and then you would assume the 2-year President term. This is an important job as the President coordinates with each board member on what they and their committees are working on. You also are the face of the IPNA to city officials and work to build strong ties with our elected officials and other community leaders.



All board members meet monthly for a board meeting the Tuesday before the IPNA Meeting. I like to call this meeting the most fun party in the neighborhood. It's wonderful to meet together to talk about issues involving the neighborhood. If you or someone you know is interested in serving on the board, reach out to our nominating committee.

The Nominating Committee members are Advocator Editrix Carla Jeffries, Festival Chair Kila Posey and former IPNA Secretary Julie Noble. You can reach all of them by emailing nominations@inmanpark.org. Once you put your name in the hat, a member of the nominating committee will reach out to meet with you about your interest. The new slate of candidates will be presented at the April meeting and voted in during the May meeting. There is some transition, and new board members fully assume their new roles in June 2023.

**Compelling
Kudzu
Chronicle**

Page 6

**Gone
Fishin'**

Page 10

**Festival
Artwork
Revealed!**

Page 11

Advertise in the Advocator!

ads@inmanpark.org



TACHA COSTNER

Your Trusted Real Estate Expert

Listing and Selling Inman Park Homes since 1997

Curious about the market? Contact Tacha.



TACHA COSTNER

C: 404.274.8134

O: 404.383.HOME (4663)

Tacha@HOMEgeorgia.com



Scan QR code
to learn more.



1819 Peachtree Rd, Suite 100 | Atlanta, GA 30309
HOMEgeorgia.com | @HOMErealestate.ga



I heart

COWORKING ON THE BELTLINE



ALKALOID.NET



404.475.4850

ALKALOID
NETWORKS

Your Neighborhood Coworking!



FEBRUARY Events Calendar

1083 Austin Ave NE Rm 108, Atlanta, GA 30307
little5pcc@gmail.com • 404.522.2926
www.L5pcc.org

Emory University's Community Health Night

LOCATION: Our Shifalo Cafe

DAY/TIME: February 23rd, 4:00pm-8:00pm

Emory University Hope Clinic has partnered with "Someone Cares" to provide FREE walk-up sexual health and COVID-19 testing for our community

MARCH

American Red Cross Blood Drive

LOCATION: Our Shifalo Cafe

DAY/TIME: March 2nd, 10:00am-3:00pm

Head over to www.redcross.org/give-blood.html to get scheduled for the next Blood Drives here at Little 5 Points Community Center.

For more information about events or to schedule your next event at the Little 5 Points Center for Arts and Community, contact us 404-522-2926 or Little5pcc@gmail.com



Inman Park Neighborhood Association

Officers

President, Cristy Lenz
president@inmanpark.org

VP • Planning, Matt Cherry
planning@inmanpark.org

VP • Zoning, Todd Jackson
zoning@inmanpark.org

VP • Historic Preservation, Sandy Hoke
historic.preservation@inmanpark.org

VP • Public Safety, Tom Baldwin
public.safety@inmanpark.org

VP • Communications, Will Pickler
communications@inmanpark.org

Treasurer, Phil Disher
treasurer@inmanpark.org

Secretary, Vy Nguyen
secretary@inmanpark.org

Advocator

Editrix
Carla Jeffries

Staff
Marge Hays, Glenda Minkin, Julie Noble,
Pat Westrick

Advertisement Team
Beverly Miller, Melissa Miller, Sara Wittich

Graphic designer
Colleen Finn

Submissions
advocator@inmanpark.org

Printed by Darcel Stewart, The UPS Store

Chairs & Coordinators

Archives

Teresa Burk • tburkus@gmail.com • 404-449-3000

Sidewalks

Millie Astin • sidewalks@inmanpark.org • 404-293-9012

Education

Eric Goldberg • education@inmanpark.org • 678-467-2096

Festival 2023

Kila Posey • mrs.kyposey@gmail.com

Freedom Park Conservancy

Sally Dorn • sdorn47@comcast.net

Graffiti

Nelson Ray • NelsonRayATL@gmail.com • 404-561-6101

Hospitality

Patsy Fisher • hospitality@inmanpark.org • 404-550-0790

Inman Park Tree Watch and Arboretum

Jim Abbot • abbot.jim@gmail.com • 404-281-0638

Lifelong Inman Park

Cathie Berger • lifelong@inmanpark.org • 678-429-5221

NPU-N Representative

Scott Evans • npu.n@inmanpark.org • 404-822-3884

Social

July Fourth: Carol Mitchell • carol@the-mitchells.org •
404-659-2579

Holiday Party: Cristy Lenz • 404-822-3884

Porch Parties: Pat & Richard Westrick • patwestrick@realtor.com
• 404-388-6466

Special Events

Karen Goeckel • kgoeckel@me.com • 678-612-1776

Springvale Park

Beau Weidman • g.weidman@comcast.net • 770-715-3403

Amy Higgins (Master Plan) • ahigginsia@gmail.com • 404-593-8253

Transportation

Janice Darling • transportation@inmanpark.org • 678-488-1925

2023 Inman Park Book Club

Meets at 7:00 pm on the last Tuesday of most months.

Most book selections are available at our neighborhood bookstore:

A Cappella Books
208 Haralson Ave, Inman Park
10% Discount! Shop local!

Feb 28

Cathy Jamison
805B Edgewood Ave
"The Empire of Pain"
By Patrick Radden Keefe

Mar 28

Susan Pins and Allen
Stephens
850 Piedmont Ave.,
Unit 2607
"The Measure"
By Nikki Erlick

NOTE: You MUST be fully vaccinated and boosted to attend face-to-face book club events

Please contact Jan Keith (janetbkeith@gmail.com) with any questions.

Get your IPNA vinyl banners, cloth masks and Historic Inman Park (HIP) stickers for sale at Intown Business Center!



Neighbor to Neighbor

Inman Park neighbor volunteers are ready to assist anyone needing short-term help. For example:

- Getting to medical appointments
- Preparing meals or help with pets while recovering from illness
- Managing daily activities

Visit www.inmanpark.org/lifelonginmanpark
Contact Jackie Lawrence (404-272-0024)



Porch Party!

Friday, February 24 at 7:30 pm.

**Melissa Miller and Thom Abelew
at 211 Hurt Street**

**Bring a dish to share and whatever you
want to drink.**

**Questions? Pat or Richard Westrick
404-388-6466**



Inman Park
NEIGHBORHOOD ASSOCIATION

Hospitality Committee



Inman Park
NEIGHBORHOOD ASSOCIATION

New to the 'hood? If you just purchased in Inman Park and would like a Welcome Packet delivered, please email us at Hospitality@inmanpark.org

Do you have personal news or a life event to share with the neighborhood? We would love to hear about it and recognize you in the Advocate!

Inman Park Parents!

**Want to stay in the know about current APS
(and other parenthood-based) news?
Join the Inman Park Parent Google Group to
hear the latest.
Email junoble@yahoo.com to join.**

The Friends of Ponce de Leon Library would like to express our appreciation for the generous donation given to us by the Inman Park Neighborhood Association

Jan Keith

For Friends of Ponce Library

Nominate a Neighbor for the Butterfly Awards!

The Butterfly Awards recognize neighbors who have gone above and beyond to make Inman Park a special place to live, work, and play.

To nominate an individual or group, please send the name of your nominee(s) and reason for the nomination to Kathleen Busko at kathleenbusko@hotmail.com

Volunteer Fair March 5th at the Trolley Barn!

Come learn about how to get involved with Festival and IPNA, 4:00 - 6:00 pm!

Dogs in City of Atlanta parks MUST be on leash. This includes all of Freedom Park in Inman Park.

It is the law: Section 34-205 of the Fulton County Code of Ordinances

IP Caregiver Support Group

If you're concerned about someone with memory loss — a family member, friend, or neighbor — please consider attending the Inman Park Caregiver Support Group. We focus on the challenges of caring for someone with cognitive decline. This free group meets every third Thursday of the month from 4:00 to 5:30 at the Inman Park United Methodist Church. Please contact Moira Keller LCSW if you have questions, 404-290-1630 or moira.keller@comcast.net

IPNA Calendar

Feb 14

Valentine's Day!
hug your lovers
anytime

Feb 15

IPNA Meeting
Trolley Barn/Zoom
7:30 p.m.

Feb 23

NPU-N Meeting
Zoom
7:00 p.m.

Feb 24

Porch Party
See page 4
for details

Feb 28

Book Club
See page 4
for details

Mar 15

IPNA Meeting
Trolley Barn/Zoom
7:30 p.m.

Mar 23

NPU-N Meeting
Zoom
7:00 p.m.

Mar 28

Book Club
See page 4
for details



Trailing Kudzu

By Lynn Curtis Koehnemann • lkoehnemann@gmail.com

The first Kudzu plant I ever saw was a small bush in my grandparents' pasture. Kudzu is known for its propensity to grow fast and take over a landscape, but nothing about the meter-wide plant before me suggested aggression. This bush, I was told, could grow a foot a day, but here the cows happily kept it nipped back. I had never heard the word. "Kudzu," my grandmother Mona explained, "came from Japan. Mr. Pleas used to sell it from his nursery. He shipped tens of thousands of rootstock cuttings to people all over." I had heard about Mr. Pleas many times before. He was a botanist and photographer



who had moved to Chipley, Florida, from Indiana twenty years earlier. When my grandparents arrived in 1918, they bought the recently timbered pineland next door to the Pleas' place.

My grandparents and Mr. Pleas shared the Victorian enthusiasm for acquiring new plants from around the world. Exotic plants were not only novel and beautiful but could also be very useful. Back then, biologists were concerned with the extensive economic loss of crops caused by foreign birds and insects. Exotic plants were not seen as a threat. In its native Asia, harvesting keeps Kudzu in check. In addition

to animal fodder, Kudzu there is used for edible starch, medicine, basketry and



papermaking. Like many non-native plants, Kudzu is very successful at invading disturbed or vacant land. The problem, though, is that invasives crowd out and replace native plants that are important to our native fauna. And nobody foresaw the resulting rampant spread of Kudzu.

Mr. Pleas first saw Kudzu at the Japanese exhibit of the Chicago World's Fair in 1893. It was promoted as a porch plant for summer shade. Acquiring a few seeds, he tried it as shade for his summer house on the front lawn. But when it sent out long trailing vines all over the grass, he dug the vines up and relocated them (in 1904) to conceal a brush pile. The Kudzu grew quickly there:

"These three plants were set out around it, and by the fall of 1905, they had covered a space of about 50x80 feet (all that is available between our garden, barn, drive and neighbor's pasture lot) to a depth of two and one-half feet, practically as is shown in the accompanying photograph. It was not until the vines began creeping through the bars to the horse shed and the fence on the neighbor's that I suspected its value as stock feed. My horse simply got down on his knees, reached under and nipped every leaf that came within two feet of the bars, while the neighbor's horse, when turned into the adjoining lot, would make for the Kudzu vines the first thing and never leave until the last leaf in reach was eaten." (Article by C.E. Pleas published in the Ocala Evening Star, 1906)

Convinced of its great value, Mr. Pleas promoted Kudzu energetically, writing articles for publication and placing ads.

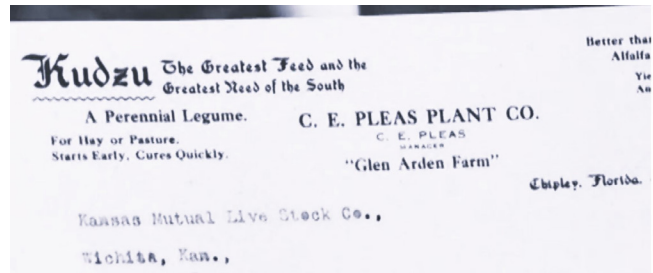
In 1919 he was featured in an article in Scientific American. Popular Mechanics published a Kudzu article he wrote that same year.

His promotion of Kudzu was very successful. Then, in 1930, the Southeast experienced the worst drought in memory. Some farms lost half a foot of topsoil; others lost all of their topsoil. The red and yellow hills exposed were the result of careless farming practices. The Soil Erosion Service, the predecessor to the SCS, was created in 1933 to promote soil conservation. Because the leguminous Kudzu vine was known to prevent erosion and to enrich the soil, the Soil Erosion Service paid farmers eight dollars an acre to plant it. Farmers and the Civilian Conservation Corps had planted about 3 million acres of Kudzu by 1946.

In the 1940s, the State of Georgia gained its own advocate for Kudzu. Channing Cope, a Covington, GA, landowner urged farmers to plant Kudzu daily from his radio show, his farm column in the AJC, and his bestselling nonfiction book "Front Porch Farmer". He was shocked when The Soil Conservation Service stopped promoting Kudzu by the 1950s. In 1953, the United States Department of Agriculture (USDA) removed Kudzu from its list of recommended cover plants. In 1970, the USDA labeled Kudzu a weed. And in 1997, after more than half a century of evidence of the damage done by the vine, Kudzu was finally listed as a "noxious weed" under the Federal Noxious Weed Law.

Walking in the vicinity of Inman Park, you still see large masses of Kudzu, sometimes formed like sculptures: along the railroad, near the dog park, and next to the Beltline. My daughters point out that the pretty purple blooms smell like Nu-Grape soda. Climbing high on poles and trees, trailing on slopes, and twining around cables and fences, Kudzu girdles and smothers nearby plants and trees.

In 2010 Kudzu covered an estimated 227,000 forested acres in twelve Southern states and was expanding by 2600 acres per year. That's more than 350 square miles of forest land impacted by Kudzu, but the experts are more concerned by other invasive plants in our forests. Japanese honeysuckle, for



example, covers 10.3 million forested acres and spreads to about 65,000 more acres every year. English ivy, Chinese privet, Cogon grass, bamboo, tallow trees and other invasives are a greater concern to foresters than Kudzu. By killing plants that serve native wildlife species as food and shelter, these invasive plants pose a major risk to biodiversity, especially in the Southeast.

Here is a link to Trees Atlanta's list of the top ten invasive plants that harm our urban forest. <https://www.treesatlanta.org/resources/top-10-invasive-plants-that-harm-our-urban-forest/>

Inman Park Festival Street Closing and Impacts

Please pay close attention to the street closing and remove your cars from the streets prior to the closing in order to avoid being towed.

Closed Friday, Saturday, Sunday:

The following streets/areas will close on Friday, April 28th at 7:00 a.m. and reopen on Sunday, April 30th at 10:00 p.m. Cars must be off the street in this area by 7:00 a.m. on Friday, April 28th or they will be towed:

Euclid Avenue from Elizabeth Street going west to Waverly Way (where it crosses Springvale Park)
Waverly Way at two areas Popular Circle/
Euclid Ave to the bend in the road (near the Freedom stage) and then again From Euclid Avenue to Edgewood Avenue
Delta Place along the East side of Delta Park

Waverly Way from Freedom Park bend to Euclid Avenue and from Edgewood to Dekalb (See No Parking)
Elizabeth Street from Lake to Waverly Way and Edgewood to Dekalb
Hurt Street from Waverly to Euclid and Edgewood to Dekalb
Druid Circle from Euclid to Dixie
Spruce Street from Edgewood to Dekalb (see no parking and parade impact)
Waddell (see no parking and parade impact)

No Parking Zones Saturday and Sunday:

The following resident only access streets will have No Parking Zones on Saturday, April 29th from 3:00 a.m. until Sunday, April 30th, 7:00 p.m.:

Waverly Way No Parking on the Springvale Park side of the street.

Waddell No parking on the east side of the street (Spruce side)

Spruce No Parking on the east side of the street from Euclid to the driveway of the townhouses/IP pool.

Parade Closing Saturday 12:00 p.m. - 2:00 p.m. The following will be closed to all traffic on Saturday, April 29th

Please note: it is illegal to drive a golf cart on public streets open to traffic. Festival security will stop any golf cart with an unlicensed driver or anyone driving under the influence.

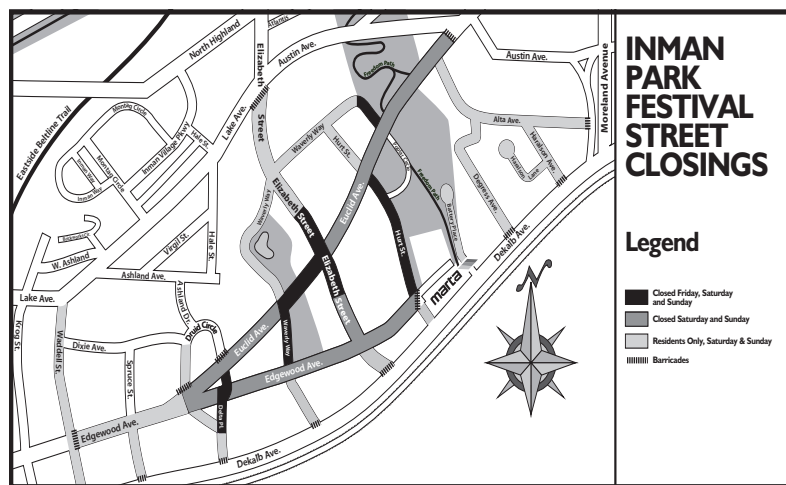
FESTIVAL GOLF CART POLICIES AND RULES

For safety and insurance purposes, the policies and rules established in 2019 regarding Festival Golf Carts remain in effect. See details below:

1. Only official Festival staff carts will be allowed inside the Festival footprint. These carts will all be marked with signs in front and in back for easy recognition.
2. Staff or volunteers in Festival carts should not transport Festival attendees unless there is an emergency of some kind.
3. Festival golf carts will not be checked-out to anyone under 18 years of age or to anyone without a valid driver's license.
4. If you choose to decorate your cart, make sure that the Festival signs on front and back of the cart are clearly visible to the officers and staff. If not, you will be stopped. Please do not use tape or any attachments that will leave residue or marks on the carts.
5. Personally rented carts will not be allowed in the footprint of the Festival during Festival hours. Taking a cart to Butterfly Ball or to Theater Night is fine as it is after Festival hours. If you rent a personal cart and LIVE within the Festival footprint, you will not be allowed to enter or leave your property with your cart during Festival hours. Park it outside of the footprint (if you want to use it during Festival hours) or on your property if you won't be using it.

6. Traffic laws will be enforced by our officers. This means that the driver of a cart, whether Festival staff or not, within the footprint or not, must have a valid driver's license and must not be intoxicated or driving in a dangerous manner. Our officers will stop drivers who, in their discretion, may not be complying with the law.

Please direct any questions to the Chair of the Festival Committee at inmanparkfestival.org.



to Edgewood Avenue
Elizabeth Street from to 144/145 Elizabeth Street to 176/177 Elizabeth Street
Hurt Street From Euclid Avenue to Poplar Circle

Closed Saturday and Sunday :

In addition to the above closures, starting Saturday, April 29th at 3:00 a.m. until Sunday, April 30th at 10:00 p.m. the following streets will close:

Euclid Avenue from Austin to Edgewood
Edgewood Avenue from Hurt Street to Druid Circle (west side closest to Spruce)
Elizabeth Street from Euclid to Edgewood
Hurt Street from Euclid to Edgewood

Important note: The street closings above are the main festival footprint. Cars must be off the street in these areas by 3:00 a.m. on Saturday, April 29th or they will be towed. If you need access to your car Saturday, please relocate it outside the closed areas.

Resident Only Access Saturday and Sunday: The following streets are closed with resident only access starting Saturday, April 29th at 3:00 a.m. to Sunday April 30th at 7:00 p.m. Note: You may be asked to provide ID to enter these streets with a car:

Alta Avenue
Haralson Ave
Haralson Lane
Degress Avenue
Battery Place

from 12:00 p.m. - 2:00 p.m.
Edgewood from Krog to Wadell
Waddell Street
Spruce from Edgewood to Dekalb

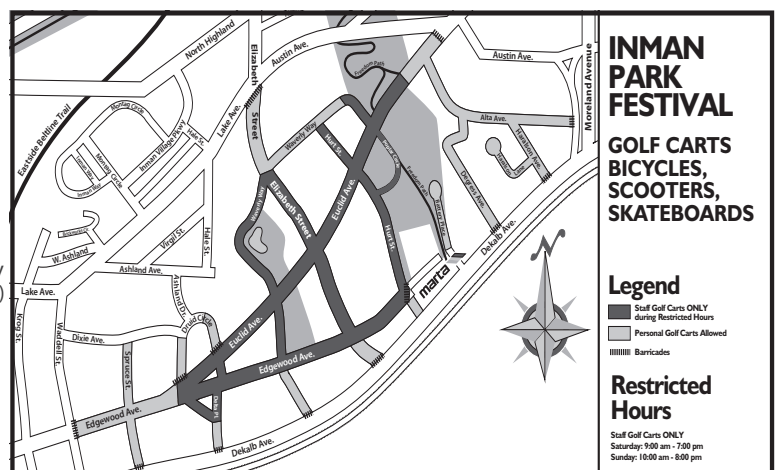
One Way Street Saturday and Sunday

The street below will run one way on Saturday, April 29th from 3:00 a.m. until Sunday, April 30th, 10:00 p.m.

Krog one way from Lake Avenue toward Edgewood

Transportation Inside the Festival Footprint – Personal Golf Carts, Skateboards, Scooters, and Bicycles

Personal Golf carts, skateboards, scooters and bicycles are not allowed in the Inman Park Festival footprint during Festival hours. Personal golf carts will be allowed on Friday night (April 28nd) for Butterfly Ball and Saturday night (April 29rd) after 7 pm for Theater Night.





OPENING
@ 100 HURT ST NE
INMAN PARK
SOON!

WE AIM TO CREATE AND SHARE
THE THINGS WE CRAVE -
QUALITY COFFEE FROM OUR
PARTNERS AT ONYX, FRESH
SALADS, SEASONAL TOASTS,
BREAKFAST BURRITOS, PLUS
PASTRIES AND BREAD BAKED
ON SITE.



SHOPTHEDAILY.COM
@THEDAILYATL

THE DAILY
WORD SEARCH



ATLANTA
AVOCADO
BACON
BURRITO
COFFEE
COMFORT
EGGS
FETA
FRESH
HUMMUS

HURT ST
LATTE
PITA
SALMON
SMOOTHIE
SOURDOUGH
THE DAILY
VIBRANT
VEGGIES
YOGURT

FIND ALL 20 WORDS?
STOP BY FOR A FREE COOKIE!

The Trolley Barn Board Is Looking for New Members!

The Trolley Barn (Atlanta & Edgewood Street Railway Co.) is seeking neighbors who are interested in serving on the Board of Directors. Those interested in serving must, at the time of their nomination and election to the Board, reside in or own and operate a business within the Inman Park Neighborhood.

Board members are elected to serve for 3-year terms. While the Board will consider nominees with all skill and experience levels, we are currently seeking nominees with backgrounds in one or more of the following areas: finance/accounting, non-profit management, marketing, and facilities management.

The Trolley Barn is a 501(c)(3) corporation that is operated primarily for the following charitable and educational purposes:

- To lease, preserve, restore, rehabilitate, recondition, and protect the Atlanta & Edgewood Street Railway Company Trolley Car Barn;
- To provide meeting places for charitable, civic, and community organizations and groups; and
- To establish a facility in which to display memorabilia and artifacts of the City of Atlanta and of the area of Inman Park and of the Atlanta & Edgewood Street Railway Company and building.
- To contribute to the historic Inman Park neighborhood.

Anyone interested in serving on the Board should email Brian Roof at roofba@gmail.com by February 10, 2023.

Final voting on board membership will take place at the Trolley Barn Annual meeting in March, 2023.

Porch Party Thanks

Many thanks to all our neighbors who volunteered their porches for IPNA Porch Parties in 2022:

Jeanne LaSala and Jim Abbot
Alison and Jeff Gordon
Marji McCollough and Dirk Schroeder
Amy Higgins and Mike Simpson + Galit Levitin and Oren Avissar
Kati and David Greenky
Carol and Ben Mitchell (whose Porch Party was rudely interrupted by the potential of Hurricane Ian!)

Diana Glad + Sarah and Conner Henderson

We have several prime months available for 2023, so if you'd like to see your name in this spot next year, let us know: Pat's email is patwestrick@gmail.com, and her cell phone number is 404-388-6466. We couldn't have Porch Parties without the folks who say, "Sure, you can use our porch this month!"

What does it take to host a Porch Party? We've been told by many that it's the easiest party they have ever given. The neighborhood supplies all the disposables – plates, cups, forks, napkins – and the guests bring their own food and drink. What

could be simpler? They are scheduled for the last Friday of the month, from February through October (except April, of course!) and are a great way to meet new neighbors and re-connect with the old.

Keep in mind that the term "porch" is used somewhat loosely, as they are sometimes held in condos or lofts, backyards and decks, or are shared by next door neighbors. If you've never attended one, give it a try in 2023. Hope to see you February 24 on Hurt Street!

Doggo the Month: Jameson (called Jamie)



He is like a happy, tiny yak.
Birthday boy--one year old this month!



Guiding Executives Through **STRATEGIC CHANGES**

Strategy Alignment
People Mobilization
Results Delivery

Fergal Kearns & Janice Darling

info@crossing-point.com
www.crossing-point.com



Ward Bradshaw
Realtor®

m. 404.402.3324 o. 404.668.6621
ward.bradshaw@compass.com
team360atl.com
1409 Peachtree Street NE, Atlanta, GA 30309



Sign up to Volunteer at the Festival!

By Catherine Butler and Sally Dorn • catherine.b.gunter@gmail.com, sdorn47@comcast.net

Thanks to everyone who signed up to be a block captain! We are excited about the response and look forward to all the volunteers that will sign up! Block captains will start making the rounds to recruit volunteers for the festival this month, so keep an ear out for your doorbell for all the details on how you can volunteer and help your neighborhood. Each block captain lives on your street or nearby and is there to make it as easy as possible to get involved. Another great way to meet more neighbors!

If you are like me and like to plan way ahead, you can visit tinyurl.com/InmanParkVolunteer to sign up now. Festival is April 28-30, 2023.

The festival is volunteer driven and all proceeds benefit the Inman Park Neighborhood Association. These funds

go towards neighborhood beautification such as sidewalk repairs, park improvements and local schools. Each shift is 2 hours and there are several options to choose from. When you volunteer you'll get a free Inman Park Volunteer t-shirt and shift beer! We'll also provide you with a butterfly decal for your mailbox that indicates you volunteered.

Join us in April!



SCAN ME

Trash Patrol

By Kathleen Busko • kathleenbusko@hotmail.com

It started with a single email. Is anyone interested in volunteering to pick up neighborhood litter? Soon the Inman Park Trash Patrol had 45 volunteers.



Now every street in Inman Park has been adopted. In fact, some streets are patrolled by teams of neighbors who have joined together to

monitor problem areas.



Thanks to the Lifelong Inman Park Committee's funding \$500 worth of equipment, each volunteer received a grabber to facilitate trash collection. Volunteers go on patrol as frequently as possible, ideally weekly. The goal is to keep Inman Park litter free.

If you see a neighbor with a grabber and trash bag, please stop to say thanks or join in, if you can.



Catch and Release in Springvale Park

By Alison Gordon • alisongordon@gmail.com

While on a Springvale Park visit on Saturday, my children and I met Eli Ames (9) from Sinclair Avenue fishing in Springvale Pond. He quickly gathered a group of young, enthusiastic children wanting to learn the craft. He said one of his favorite things to do was to come out to the pond and see what he could catch and release.

Q: How easy is to catch a fish in Springvale Pond?

EA: It is so easy because there are SO many fish!

Q: What do you do to catch a fish?

EA: You just throw the net out to catch minnows or cast the fishing line to catch catfish. Today I caught about a hundred minnows and some catfish. Some days I'll bring a rod out and catch big fish like koi. One time I caught a koi that must have weighed over 15 lbs!

Q: What is your favorite part about living in Inman Park?

EA: Well obviously, soccer. I wake up every day at 5:30 am to

practice every day. But I also love the people and my mom and dad, but I love being able to go fishing. It is just so cool to be able to cast my rod into the water and pull out some giant fish.



Eli loves fishing so much, he has his own YouTube channel! Some of his videos have received over 17,000 views! Check out (and Eli says it is very important that you Subscribe to) "Gone Fishing Ames" for more Springvale Park fishing tips and tricks, and help Eli go viral.

Eli said he is always up for teaching others how to fish and would like to host a net casting and fishing "camp" for kids when it's a little warmer! Be on the lookout for more information about this energetic young Inman Parker the next time you visit Springvale Park!

Interviewer's note: Did you know, Springvale Pond is technically called "Crystal Lake" per the Olmsted Brothers' original plan for the park? While we are far from the days of it being a truly crystal clear lake, the Springvale Park committee is hard at work to beautify the area and clean its waters.

2023 Festival Artwork Unveiled

By Lacey Goodwin • lacey_goodwin@outlook.com

The Inman Park Festival committee is excited to share the 2023 Festival artwork created by former Inman Park Resident, Adam Stephenson. Adam lived in the Little Five Points and Inman Park area for six years. He recalls the Inman Park Festival being some of his favorite neighborhood memories and created a unique, custom piece as the look and feel of the 2023 Inman Park Festival.

As a professional artist with a long career in graphic design and graffiti arts, he works across a range of media and focuses on the themes of exploration, loss, and the indomitable human spirit. He's also the co-founder of Off the Tracks, a local art non-profit that executes murals, art installations and sculptures for the public. "I think that public-facing art made for everyone demystifies art" he said in a recent WABE interview.

His work is heavily influence by street art. "Coming to Atlanta, I was exposed to graffiti, and this stuff absolutely blew my mind and sent my imagination reeling. I was just seeing forms that I'd never seen before, colors that I'd never seen before, compositions that I'd never seen before." That experience and connection with the local graffiti scene, led to his passion for bold large-scale works, geometric experimentation, and complex layer techniques.

This year's Festival design draws on Adam's experiences in the neighborhood. The sharp edges and layering pay homage to the wildstyle graffiti pieces that can still be seen on the walls of Little Five Points and the Freedom Parkway underpass on the Beltline. The overall elegant balance of the design also reflects the beautiful architecture found throughout Inman Park.



BUG BUSTERS
Pest • Termites • Mosquito • Wildlife • www.BugBustersUSA.com

770-517-0200 • BugBustersUSA.com

Springvale Park Update: Chafweed in SVP?

By Beau Weidman • g.weidman@comcast.net>

During 2022, we noticed the appearance of the invasive weed, also called Japanese chafflower or hitchhikers. It is a problem all over as its seeds have barbs that will attach to pants, skirts, shoes, even pets. At first, I was reluctant to agree to an herbicide treatment, but other volunteers had great success using 2,4-d, short for a much longer chemical name. It is more easily seen as Enforcer brand 'Poison Ivy and Poison Oak Killer'. It seems to be eliminated from the children's playground, shrub and planting areas. The south block may take a larger effort as it is a passive space with less landscaped surroundings.

The Mardi Gras Volunteer Days are coming on February 18th and 25th, Saturdays. Meet at the bottom of the

stone stairs off the corner of Euclid and Waverly at 9:00 until noon. If you are willing to mulch, rake, search for chafweed or just supervise, email me.

The permit for the Euclid sidewalk has been approved. Construction should start also around Mardi Gras. It is very early on, but there has been another filming request. This is for follow up scenes to The Exorcist. Maybe, when volunteers trash the chafweed, the demons can be thrown out too.

Big thanks to Steve Hays and Barbara Leach for all their hard work with Friends of Inman Park. That effort is a great funder of the special projects in SVP. Donations are always appreciated. See you around Mardi Gras.

IPNA Meeting Minutes: January 18, 2023

President Cristy Lenz called the meeting to order at 7:33 P.M.

Welcome/Introduction of newcomers - No newcomers present

Police Officers' Report - Sgt. Soukoup reported patrol is going well. Officer Ricardo Jones, our new IPSP officer, has just started patrolling. Please greet him if you see him. The IPSP truck is out of service but officers are on duty in their personal vehicles. Cristy Lenz asked about a person in IPV who was arrested on the roof of a building, but Sgt. Soukoup has no knowledge of the event. He recommended that if anyone sees someone on a porch on in a backyard, call 911. It may seem like an overreaction, but there is an individual peeping into windows, and there are fears this will escalate. Call and get a case number. APD is trying to catch this person. Reports help with this effort.

Minutes of last meeting - motion to approve was seconded, and the minutes were approved.

Announcements -

Porch Party - Pat Westrick announced that IPNA Porch Parties take place the last Friday of each month. A neighbor volunteers their porch, IPNA provides cups and paper products, and everyone brings a dish to share and drink of choice. On February 24, it's at Tom Abelew's and Melissa Miller's house, 211 Hurt St. We need to sign up more neighbors' houses for upcoming parties. Email Pat to host at patwestrick@gmail.com.

Friends of Inman Park - Amy Higgins announced that our 501c-3, Friends of Inman Park, the fundraising arm of the neighborhood, is actively soliciting funding for Springdale Park. Thanks to Steve Hays for 20 years of running the organization. Amy, along with Neel Gupta, Barbara Leach, and Sandy Hoke are on the board now. Lifelong Committee - Sandy Hoke - Lifelong Committee has bought grabbers so that volunteers can patrol and clean up their adopted streets once per week. They will wear arm bands to ID themselves, so please thank them when you see them. To volunteer, email kathleenbusko@hotmail.com.

Festival Committee - Kila Posey - Festival prep is in full swing. Volunteers rode the streets recently to make sure the sidewalks are intact and to report all sidewalk issues so the City can place covers over problem areas. 2023 Festival artwork will be unveiled next month in the Advocate. Volunteering is huge and makes festival successful. We need everyone to help. Volunteer info and sign-ups will open on Feb 1. The Festival Volunteer Committee is looking for block captains. Watch for an article in the Advocate on how to be a block captain. Cristy announced there will also be a volunteer fair in late Feb/early March, so watch for that as well.

Elected officials - none present

Officers' reports:

President -

1) Updating our Historic Preservation code - Regina Brewer - the Inman Park Historic District ordinance is being updated. Aaron Fortner of Canvas Planning will consult. There will be an IPNA vote on any changes to the existing ordinance. Email Regina at reginabrewer1963@gmail.com with suggestions. Cristy commented that it will be a months-long process and the HP committee will be involved. The neighborhood will see the first draft of the new ordinance in early summer after festival.

2) New IPNA Secretary candidate - This is a mid-session replacement due to Alex Gamin's moving away, so IPNA membership does not have to vote. The IPNA board has voted to install Vy Nguyen as IPNA Secretary. Vy is traveling and could not be here, but she has volunteered to be the next secretary. Motioned and seconded, unanimously approved, and Vy will start in February, 2023.

3) The City is going through a re-zoning process, so please attend the City zoning meetings.

4) April Fools Market - The LSP Business Association is planning a market on April 1. The matter is going to NPU, so we need a vote. Motioned and seconded to support the market application. Motion passed 35-4 with no abstentions.

5) The City of Atlanta wants to put one public art project in each neighborhood. Please see the link in the agenda to vote and give your thoughts on what you prefer. Historic Preservation -

Regina Brewer reported on Villa de Grip for Sandy Hoke. Applicants were on the agenda in November but did not appear. The application was voted down at that time. Michelle Everett of Jones-Pierce architects presented the application. The applicants added a public plaza, green space, and the glass building connector to satisfy the immediate neighbors. The immediate neighbors, HP committee, and Villa de Grip Committee each voted on the application. The recommendation is that the compatibility rule be followed so that no building be taller than the original block face. The UDC staff has stated the compatibility rule does not apply in this case. Zoning consultant Aaron Fortner of Canvas Planning agrees that the rule should apply. The height difference in question is 10 ft. The development includes 91 parking spaces for residential and commercial combined and 29 parking spaces for residential parking. Cooper Pierce, lead architect for the project, stated the compatibility rule applies only to single-family, but the committees and immediate neighbors do not agree. Cristy stated we believe our compatibility rule stands, and we support it as a neighborhood.

Q: The industrial style stairs seems strange

compared to the rest of the neighborhood. A: It has been brought down in height. It is their standard egress stair.

Q: Why don't we want buildings to be higher than 35 ft? A: Cristy stated we are an historic neighborhood and we do not want to lose the historic character of the neighborhood. It is important that we fight to protect our ordinance. There is no precedent in that block face for the proposed height.

Q: Is there shared parking? Yes, between the office during the day and restaurant at night.

Sandy Hoke stated that IPNA has a disagreement with the UDC regarding the compatibility rule. This is something we hope to resolve next Wednesday at the UDC hearing.

Q: The intersection is already congested, especially for walking; how will they handle the traffic? There are two ways to get to the interstate. One way is down Irwin across the BeltLine, which is difficult. This is the only other way, and it will be a mess. A: They are discussing signals and crosswalks. That will not be handled until the Special Administrative Permit approval process. A neighbor commented that the alley will connect to the parking deck to allow ingress and egress onto Elizabeth. If someone is trying to get into the deck, they will have to wait, and there is nowhere for the drivers to wait, so traffic will back up on N. Highland. This is a problem with having this massive development here. Matt Cherry asked if since we are about to update the historic district code, and this property is in subarea 1, which predates the BeltLine, will we allow for more density when we update our historic regs? Regina stated when the historic district ordinance was being formulated, each parcel in the neighborhood was examined to carefully consider where higher density should be allowed. From Pure Taqueria south, there is more density, as well as along DeKalb Ave. That will not change for the update.

Q: Why are we voting? A: The UDC staff makes recommendations. IPNA also makes a recommendation through voting. The UDC staff recommendation and the IPNA vote are non-binding. We can also support a project but add conditions for elements we want to see changed.

A motion was made and seconded to support the application with the condition to limit the height based upon the compatibility rule. 38 were in favor, one opposed, none abstained. Motion carries. Zoning - Highland Pub change of ownership due an estate planning issue passing it from father to son. Mindy Thompson represented the applicant. Nothing will change with the business.

Q: There is a quality of life issue for the neighbors across the street. They are upset about noise. They have talked with the building's owner, who has told the applicants they need to keep their

door closed to abate the noise. Can we have assurances the door will be shut? Assurances given. Motion to support seconded. 32 in favor, none opposed, none abstained.

54 Waverly Way rezoning - This is a townhome project IPNA has already voted to support. The ZRB wants an actual rezoning. The project stays the same as the one already approved. One lot is in subarea one and one is in subarea 2. Motion to support seconded. 36 in favor, none opposed, none abstained. Motion passes.

Planning: BeltLine Rail Committee update - The committee met in January; they have 20 members. There will be another meeting in late Feb. They are discussing the Eastside Streetcar extension and are focusing on the Irwin St. closure and on getting the traffic study results in March. Email Matt Cherry at planning@inmanpark.org if you want to join the committee.

Freedom Park Conservancy - Rep. Sally Dorn stated that we originally thought the ordinance would have been submitted to adopt the FPC Master Plan into the UDC. We are still waiting for Parks and Rec to get it submitted and will plan to vote in Feb.

Treasurer - Phil Disher - we have money and are in the process of planning for the change from Memberclicks to our new site.

Communications - We have started paying YourMembership and are in the process of setting up the new site. Email Will at communications@inmanpark.org if ever you have web site issues. Cristy commented there are great features like a community forum. It's so much better than Memberclicks, and we look forward to rolling it out.

Public Safety - Tom Baldwin stated that the IPSP truck was hit in the middle of the night while parked on Waddell and sustained significant damage. The other party did not leave the scene. The other party's insurance will cover the repairs. The truck is not drivable in the meantime, but the repairs can be expedited. The patrols continue with officers in their personal vehicles. They also patrol on foot and on bike.

NPU - Scott Evans reported he has no updates.

Committee Reports - Thomas Powell - L5PA - They are working with the City to install a light on Seminole. They are working to activate Finley and Davis Plaza while they wait for the long planned major plaza updates. They are also waiting to hear about the Euclid Ave improvement timeline. They are installing new park benches and planning a new mural. They will be giving a holiday meal to APD Zone 6.

Springvale Park Committee - George

Wideman reported they got rid of chaff flower on the south block and on the playground using chemicals. The natural area will be more difficult. Volunteer days are coming up on Jan. 18th and 25th. There is a filming application for a sequel to The Exorcist.

Festival - We need a water person for festival to make sure we have coolers and cups at water stations. The City's permit requires we offer water and cups. This volunteer gets a golf cart for the weekend. This job can be shared. Notify Sally Dorn at sdorn47@comcast.net if interested.

Old Business - Hulseley Yard has been empty for 3 weeks. Matt Cherry stated there is an upcoming meeting with the planning director and he will report back. New Business - Q: How do we engage further with the neighborhood Historic Preservation update? A: Email reginabrewer1963@gmail.com

Matt Cherry asked that everyone indicate on the map he brought to the meeting where they would like to see bike racks in the neighborhood.

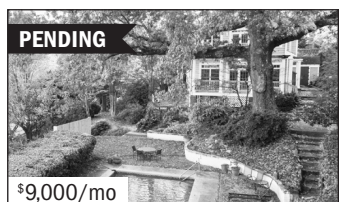
Motion to adjourn seconded.

Adjourned - 8:55 P.M.

Respectfully submitted by Beverly Miller, Interim Secretary



WE'VE BEEN BUSY OVER THE HOLIDAYS!



PENDING

\$9,000/mo

Ansley Park

4/4.5

Nancy Guss



CLOSED

\$3,000

Virginia Highland

2/1.5

Susan Schlittler & Nancy Guss



ACTIVE

\$259,900

Briarcliff Normandy

1/1

Susan Schlittler



ACTIVE

\$417,000

Poncey Highland

2/2

Ashlee Heath



CLOSED

\$515,000

Underwood Hills

4/4

Ashlee Heath



PENDING

\$857,000

Morningside

Triplex

Susan Schlittler & Ashlee Heath



PENDING

\$4,500/mo

Morningside

3/2

Anh Tran



COMING SOON

\$3,800/mo

Grant Park

2/2

Pam Bruce



CLOSED

\$765,000

Virginia Highland

2/2

Susan Schlittler

FEATURED LISTING

Fully renovated
1930's beauty



\$1,380,000

**980 Lanier Boulevard
Virginia Highland**

4/4 with Carriage House

Susan Schlittler



Homestead REALTORS®

951 B Edgewood Ave.

Atlanta, GA 30307

404.876.4526

HomesteadAtlanta.com

Our team would love to help you with your real estate needs. Contact us today!

We know you have a choice when you select your realtor, and we appreciate you taking the time to learn more about our services. Scan the QR Code below to learn more about your local real estate market.



Jeff Raw

404.786.6635
jeffraw474@gmail.com
www.rawrealestategroup.com



RAW REAL ESTATE GROUP

BUY/SELL/RENOVATE/BUILD/INVEST



INTOWN DENTAL CENTER
QUALITY CARE YOUR FAMILY CAN TRUST

ALL MAJOR
PPO INSURANCES
ACCEPTED

Celebrating **10 years** in business
@ **Edgewood Retail Center**



LOCATED ABOVE
GameStop



We are a family-owned practice offering comprehensive general and cosmetic dentistry. We are insurance friendly and are currently accepting new patients.

- Janet Kearns DDS, FAGD

MAKE
APPOINTMENT

📞 **404 889 8370**

Seeing patients ages 3+

🌐 www.intowndentist.com



LEIGH HAYS REALTOR®

SELLING INMAN PORCHES SINCE 1996

BUYING

EXPERIENCED WITH
NEGOTIATION IN THE
CURRENT MARKET

+

SELLING

STRATEGIC MARKETING
PLAN BACKED WITH
PROFESSIONAL MARKETING

CONTACT ME FOR ALL OF YOUR REAL ESTATE NEEDS
leighhays.atlantafinehomes.com



LEIGH HAYS

c. 404.402.4554
o. 404.874.0300
leighhays@atlantafinehomes.com

Atlanta Fine
Homes

Sotheby's
INTERNATIONAL REALTY

1555 Peachtree Street NE, Suite 100 | Atlanta, Georgia 30309

Atlanta Fine Homes, LLC fully supports the principles of the Fair Housing Act and the Equal Opportunity Act.
Each franchise is independently owned and operated.

Agenda

February 15, 2023

IPNA Meeting • 7:30 p.m.

Location: Trolley Barn / Zoom

I. Welcome & Introduction of Newcomers

II. Police Officers' Reports

III. Minutes of Last Meeting

IV. Announcements

V. Elected Officials' Reports

VI. IPNA Officers' Reports

A. President

B. Planning

C. Zoning

D. Historic Preservation

E. Public Safety

F. Communications

G. Treasurer

H. Secretary

VII. Committee Reports

VIII. Old Business

IX. New Business

X. Adjourn

.....
Check inmanpark.org the day of the meeting for any agenda updates

Want to be a part of next month's Advocate?

If you have news to share with your neighbors in the March issue of the Advocate, please send your submissions to advocator@inmanpark.org before February 20.



Good to Know

Inman Park Neighborhood Association (IPNA) membership:

Inman Park Neighborhood Association (IPNA) membership: Available to those who live within or own property within the boundaries of Inman Park. Membership is \$5 with online registration at inmanpark.org. Membership allows you to vote (see bylaws online for details), gives you access to the directory and makes you eligible for special neighborhood events. In addition to being a member of IPNA, you may register for the Inman Park Security Patrol (IPSP) which staffs off-duty Atlanta Police officers to patrol our neighborhood. There are four levels of commitment beginning at \$50 per year. IPNA meetings are held at 7:30 p.m. on the 3rd Wednesday of each month at the Trolley Barn. IPSP membership is based upon a rolling annual membership term. Your renewal date is one year from your membership date and again every year after that.

Websites

InmanPark.org

InmanParkFestival.org

Facebook.com/InmanPark

Instagram: @inmanpark

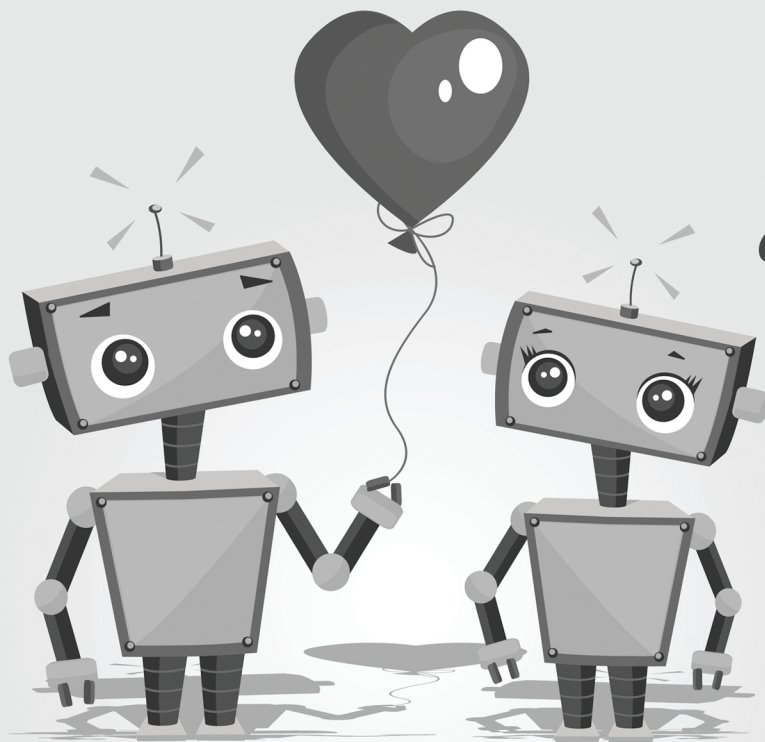
Report All Crimes: Call 911

IP Security Patrol: 404-414-7802

L5P Mini-Precinct: 404-658-6782

L5P Business Association

www.little5points.com



Happy Valentine's Day!

from your friendly
neighborhood Monster Shoppe

YOMS.shop

Ye Olde Monster Shoppe



Inman Park Theatre Night

Saturday, April 29, 2023
Under the Main Festival Tent 7:30 p.m.

Don't miss your opportunity to support our local theatres
- they help make Inman Park special!



Performance vignettes *Lively auction*

Pack your picnic basket, call your friends, and reserve your table now!
Sponsorships include a table for six at the following levels:

Tony \$1,500+
Producer \$1,200+
Patron \$750+
Star \$500+ (Available March 1)

Seating proximity to stage is determined by level of donation and date payment is received.
All sponsorships & donations are non-refundable and are tax deductible to the extent allowed by law.

Deadline for reservations is March 31, 2023.

Mail your payment by check, payable to "Friends of Inman Park", to:
Marie Wooldridge, 1082 Austin Ave. NE, Atlanta, GA 30307
Please email iptheatrenight@gmail.com with any questions.



Unable to attend? Donations in any amount are welcome.

Inman Park Massage
Cultivate Well-Being



Esalen Massage
Thai Massage
Neuromuscular Massage

Our bodies have an innate healing potential that occurs when we completely relax and sink into the present moment. My work is rooted in mind-body connection. I aspire to be an intuitive, creative and therapeutic massage therapist who is always present for my client.

Jennifer Tucker LMT

inmanparkmassage.com

404-502-4575