

# THE Inman Park Advocator



Atlanta's Small Town Downtown News • Newsletter of Inman Park Neighborhood Association

advocator@inmanpark.org • inmanpark.org • 245 North Highland Avenue NE • Suite 230-401 • Atlanta 30307

May 2022

Volume 50 • Issue 5

## President's Message

# Choosing to Live in a Historic District

By Cristy Lenz • President@inmanpark.org

What a fabulous Inman Park Festival and Tour of Homes!!! The Seed and Feed Marching Band kicked off Butterfly Ball, and the rest of the weekend felt like magic. Congrats to our Chair, Jane Bradshaw, and all of our volunteers who pitched in to make the weekend a huge success. It was so great to hear the pattering of golf carts in the streets and high school bands playing in the parade. Our historic neighborhood was filled with festival goers who loved walking through our streets to see the homes that have been lovingly restored.

Living in a neighborhood with a historic designation is a draw for many who pick Inman Park to call home. Residents like that each house is unique, creating a charming neighborhood that restaurants and businesses want to operate in, making our neighborhood extremely walkable. Our historic designation has saved us from bad development more than once in the last few years alone. It helps us to shape the neighborhood we want to live in, the neighborhood that made you want to live here in the first place. When we look around at other neighborhoods around us that lack a historic designation, we see modern homes, homes knocked down to create room for McMansions, and less thoughtful development.

Choosing to live in a historic district has its limitations on alterations to your home. It's something folks should think about before moving to a historic district. If you don't like how the front of your house looks when you buy it, you won't be able to change it. The reason our neighborhood is so desirable is that we apply the same rules to everyone and work hard to protect the integrity of our historic designation. It's always discouraging when new residents buck up against the historic regulations and want to tear down their home or completely alter it and then take offense that it's not possible.

IPNA has a thoughtful process for reviewing designs. Our Historic Preservation VP works with the Atlanta Urban Design Commission. If you are considering whether alterations are possible, working with the Historic Preservation VP can help you navigate the process of neighborhood review and UDC approval, as the Historic Preservation VP can point out things your architect may have missed or can make recommendations. The Inman Park Historic District regulations are found on [www.inmanpark.org](http://www.inmanpark.org).



[inmanpark.org](http://inmanpark.org). Feel free to take a look and read them before you design the plans for your update.

As you saw during the Tour of Homes, many gorgeous renovations are possible within the guidelines, making for so many fabulous homes in the neighborhood. Working within the historic guidelines can help your architect find creative solutions to suit the needs of your home. Remember that our historic designation is important because it preserves the character of our neighborhood so that it remains the place we know and love, the place we call home. It's a special place that we love to showcase, especially during the Inman Park Festival and Tour of Homes.

**Muscogee  
Meadows**

Page 6

**Adopting  
Shade  
Trees**

Page 9

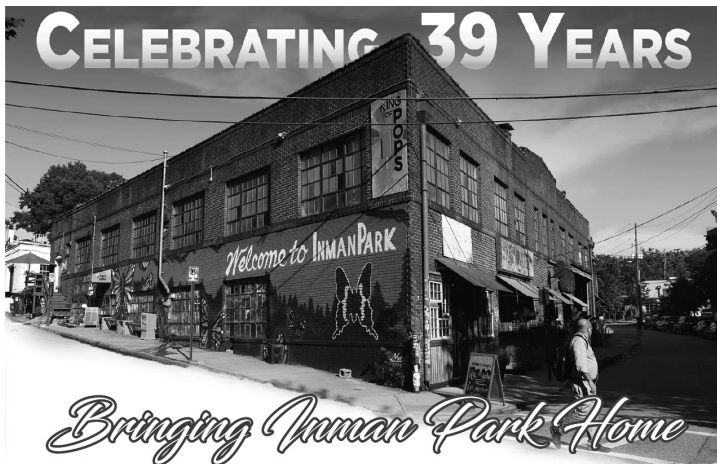
**Lotsa  
Thank You's**

Page 10 - 11

Advertise in the Advocate!

[ads@inmanpark.org](mailto:ads@inmanpark.org)

CELEBRATING 39 YEARS



*Bringing Inman Park Home*

## Your neighborhood Specialists.

For your Real Estate needs,  
Please Call Us or visit online  
404-371-4419 (Re/Max Cityside)  
404-276-7736 (Melissa)  
[www.patandmelissagroup.com](http://www.patandmelissagroup.com)



RE/MAX  
**METRO**  
atlanta | cityside

MUCH MORE THAN A DESK

## COWORKING ON THE BELTLINE

ALKALOID.NET • 404.475.4850



**ALKALOID**  
NETWORKS



LITTLE 5 POINTS CENTER FOR ARTS & COMMUNITY



## MAY Events Calendar

1083 Austin Ave NE Rm 108, Atlanta, GA 30307  
[little5pcc@gmail.com](mailto:little5pcc@gmail.com) • 404.522.2926  
[www.L5pcc.org](http://www.L5pcc.org)

*Masks will be required at all events and upon arrival at the blood drive. Please contact us with any questions.*

### American Red Cross Blood Drive

LOCATION: Our Shifalo Cafe  
DAY/TIME: Friday, May 6th, 10:00am-3:00pm  
& Monday, May 16th, 10:00am-3:00pm

### WORDS OF HOPE (Spoken Word Poetry)

LOCATION: Gateway Mask Theatre Room 008  
DAY/TIME: Sunday, May 15th, 3:00pm until -

### Emory University Community Health Night

LOCATION: Our Shifalo Cafe  
DAY/TIME: Thursday, May 26th, 4:00pm-8:00pm  
• Covid & STI Testing  
• Walk-ins welcome, Pre-registration preferred  
• [www.goemory.org/contactus](http://www.goemory.org/contactus) for info.

### ACROSS THE BOARD CHESS ALLIANCE Classes (All levels)

LOCATION: Our Dooley Suite  
DAY/TIME: Friday, May 27th, 9:00am-1:00pm



# Inman Park Neighborhood Association

## Officers

President, Cristy Lenz  
president@inmanpark.org

VP • Planning, Patrick Pontius  
planning@inmanpark.org

VP • Zoning, Regina Brewer  
zoning@inmanpark.org

VP • Historic Preservation, Sandy Hoke  
historic.preservation@inmanpark.org

VP • Public Safety, Tom Baldwin  
public.safety@inmanpark.org

VP • Communications, Emily Gordon  
communications@inmanpark.org

Treasurer, Phil Disher  
treasurer@inmanpark.org

Secretary, Alex Ganim  
secretary@inmanpark.org

## Advocator

Editrix  
Carla Jeffries

Staff  
Marge Hays, Glenda Minkin, Julie Noble,  
Pat Westrick

Advertisement Team  
Beverly Miller, Melissa Miller, Sara Wittich

Graphic designer  
Colleen Finn

Submissions  
advocator@inmanpark.org

Printed by Darcel Stewart, The UPS Store

## Chairs & Coordinators

### Archives

Teresa Burk • tburkus@gmail.com • 404-449-3000

### Beautification

Barbara Leach • leachbarbara@bellsouth.net • 404-521-2672

### Sidewalks

Millie Astin • sidewalks@inmanpark.org • 404-293-9012

### Education

Eric Goldberg • education@inmanpark.org • 678-467-2096

### Festival 2022

Jane Bradshaw Burnette • jcb5858@yahoo.com

### Freedom Park Conservancy

Sally Dorn • sdorn47@comcast.net

### Graffiti

Nelson Ray • NelsonRayATL@gmail.com • 404-561-6101

### Hospitality

Patsy Fisher • hospitality@inmanpark.org • 404-550-0790

### Inman Park Tree Watch and Arboretum

Jim Abbot • abbot.jim@gmail.com • 404-281-0638

### Lifelong Inman Park

Cathie Berger • lifelong@inmanpark.org • 678-429-5221

### NPU-N Representative

Scott Evans • npu.n@inmanpark.org • 404-822-3884

### Social

July Fourth: Carol Mitchell • carol@the-mitchells.org •  
404-659-2579

Holiday Party: Cristy Lenz • 404-822-3884

Porch Parties: Pat & Richard Westrick • patwestrick@realtor.com  
• 404-388-6466

### Special Events

Karen Goeckel • kgoeckel@me.com • 678-612-1776

### Springvale Park

Beau Weidman • g.weidman@comcast.net • 770-715-3403

Amy Higgins (Master Plan) • ahigginsaia@gmail.com • 404-593-8253

### Transportation

Janice Darling • transportation@inmanpark.org • 678-488-1925

## 2022 Inman Park Book Club

Meets at 7:00 pm on the last Tuesday of most months.

Most book selections are available at our neighborhood bookstore:

**A Cappella Books**

208 Haralson Ave, Inman Park

10% Discount! Shop local!

### May 31

Melodie & Peter Rogers,  
883 Edgewood Ave.  
"Harlem Shuffle"  
by Colson Whitehead

### June 28

Linda Dunham, 12 1st Ave.  
(Kirkwood),  
"The Correspondents"  
by Judith Mackrell

NOTE: You MUST be fully vaccinated and boosted to attend face-to-face book club events

Please contact Jan Keith (janetbkeith@gmail.com) with any questions.

Get your IPNA vinyl banners, cloth masks and Historic Inman Park (HIP) stickers for sale at Intown Business Center!



## Neighbor to Neighbor

Inman Park neighbor volunteers are ready to assist anyone needing short-term help. For example:

- Getting to medical appointments
- Preparing meals or help with pets while recovering from illness
- Managing daily activities

Visit [www.inmanpark.org/lifelonginmanpark](http://www.inmanpark.org/lifelonginmanpark)  
Contact Jackie Lawrence (404-272-0024)



## Porch Party!

**Friday, May 27th at 7:30 pm.**  
**Allison and Jeff Gordon, 166 Elizabeth**

**Bring a dish to share and whatever you want to drink.**

**Sign of the Times: We will be restricted to the porch and the yard for our visiting rather than spilling over into the house as we have done often in the past.**

**Questions? Pat or Richard Westrick,  
404-388-6466**

## Inman Park Parents!

**Want to stay in the know about current APS  
(and other parenthood-based) news?  
Join the Inman Park Parent Google Group  
to hear the latest.  
Email [junoble@yahoo.com](mailto:junoble@yahoo.com) to join.**

Congratulations to Rachel Hamilton and Dan Kuebrich, Euclid Ave., on the birth of Arthur David on March 8. He joins big brother Thomas, 2 years old.

Congrats to parents Carla and Daniel Black, N. Highland Ave., and grandparents Yvonne Merkel and Danny Black, now in Santa Rosa Beach, FL, on the birth of Sofia Lynn on April 5.

Condolences to Katie Neckermann Goldberg and family, Sinclair Ave., on the passing of Katie's mom Elaine Neckermann.

Condolences to Ellen and Kevin Creekmore, Euclid Ave., on the passing of Ellen's father.



**WE ARE  
HIRING!**

**Inman Park  
POOL**  
EST. 1992

**LIFEGUARDS  
AND POOL ATTENDANTS**

GREAT PAY AND BONUS OPPORTUNITIES  
TRAINING AVAILABLE

APPLY ONLINE AT  
**SEARSPPOOL.COM**



### Calling All IP Grads!!

Inman Park is proud of our high school, college, and technical school graduates. If you know someone who will graduate this spring or summer, please send the following information to me ([janetbkeith@gmail.com](mailto:janetbkeith@gmail.com)) so the list can be compiled and published in the *Advocator*. Thanks!

- Name
- Street
- School attended
- Degree achieved or plans for the future

Want to keep up with local events, civic activism, and neighborhood content related to Inman Park?

Join our Inman Park Google Group with almost 1000 subscribers.

Email admin Patty Durand at [pdurand@bellsouth.net](mailto:pdurand@bellsouth.net) to join.

## IPNA Calendar

### May 18

#### *IPNA Meeting*

Trolley Barn/Zoom  
7:30 p.m.

### May 26

#### *NPU-N Meeting*

L5P Community Center  
7:00 p.m.

### May 27

#### *Porch Party*

See page 4  
for details

### May 31

#### *Book Club*

See page 4  
for details

### June 15

#### *IPNA Meeting*

Zoom  
7:30 p.m.

### June 23

#### *NPU-N Meeting*

L5P Community Center  
7:00 p.m.

### June 28

#### *Book Club*

See page 4  
for details



### IP Caregiver Support Group

If you're concerned about someone with memory loss — a family member, friend, or neighbor — please consider attending the Inman Park Caregiver Support Group. We focus on the challenges of caring for someone with cognitive decline. This free group meets every third Thursday of the month from 4:00 to 5:30 at the Inman Park United Methodist Church. Please contact Moira Keller LCSW if you have questions, 404-290-1630 or [moira.keller@comcast.net](mailto:moira.keller@comcast.net)

# Muscogee Meadows

By Lynn Curtis Koehnemann • lkoehnnemann@gmail.com

Protect Muscogee Land! Recent graffiti at Krog Street Tunnel is a reminder that the earth underneath Inman Park was, for centuries, nurtured by the Muscogee (Creek) people and the Paleo-Indian peoples who preceded them.

many early settlers, the term referred to the groundnut or potato bean (*Apios americana*). After the new European settlers prevented maintenance burns, the woodland edges and prairies of grasses and groundnuts reverted to mature forests.



What appeared as wilderness to European eyes was a human-altered landscape. Indigenous peoples managed it until 1821, when the U.S. government forced the Muscogee to relinquish their land.

The Muscogee built their houses near rivers but hunted and gathered food extensively. They modified the old-growth deciduous forest using fire - creating open areas and grasslands. Sun-loving plants such as Peavine (*Apios americana*) and Broomsedges (*Andropogon* spp.), attractive to deer and other game, thrived in this actively managed prairie. Peavine is a name that could apply to any vining plant in the pea family. But for

The open woodlands they created enhanced the hunting of deer, bear, rabbit, squirrel and turkey. Early hunting trails, created atop a ridgeline, crisscrossed land that today lies beneath DeKalb and Edgewood Avenues and the CSX rail line. To the south and east, the Soapstone Ridge formation supported the largest group of Native American soapstone quarry and workshop sites in the Southeast. Paleo-Indians used it extensively to carve stone bowls, pipes, and ceremonial objects. The formation comprises 25 square miles southeast of downtown Atlanta and southwest of downtown Decatur. To the west and north lay the Chattahoochee basin - the site of twenty Muscogee settlements.

The Muscogee were traders and imported plants and seeds from Mexico and even farther south. An abandoned Native American orchard west of Augusta, Georgia, described in 1773, contained Chickasaw plum trees. The plums were seen only in cultivated plots, suggesting the Muscogee planted them there - importing them from west of the Mississippi. Muscogee gardeners also grew sunflowers (original to eastern North America), corn from Mexico, and beans, gourds, and pumpkins from Central America. Wild plant foods supplemented the garden crops. The woodland edges provided many fruits and nuts. Persimmon, muscadine grape, American plum, blueberry, blackberry, dewberry, red mulberry, Allegheny serviceberry, mountain mint, sassafras, wild ginger, Jerusalem artichoke, sunflower seeds, morning glory root (a variety of sweet potato), pecan, hickory, and black walnut were among them.

Visitors to the Latin American Ethnobotanical Garden on the UGA campus in Athens can see living examples of this rich horticultural history. The garden displays 150 culturally important plants native to Latin America to promote the conservation of plant biodiversity and traditional plant knowledge. The LAEG also maintains a small collection of Georgia native trees and shrubs of importance to the native peoples of the Piedmont region.

---

## Pee Posts: Freedom Barkway news and dog tails

By Oliva Pedersen • oliviaepedersen@gmail.com

It has been a while since I wrote about our local dog park, Freedom Barkway. Much has changed and for those of you who frequent the park with your dogs, you will know that, with the help of funds from Atlanta City Council and Park Pride, attractive stone barriers have been constructed to mitigate serious erosion. We now have smart shade structures in both big and small dog parks. We also have lighting for both parks enabling owners to walk their dogs safely at dusk. The water supply system has been improved and there is even a dog rinse station at the entrance. At time of writing our water is cut off due to potential freezing. We are hoping this will be working soon. Last but not least, Trees Atlanta is coming to plant as many as ten trees. Thank you to those who contributed to the tree fund. Thanks should go to Sylvia who is chair of the park board and has supervised, hustled, persisted, and stayed cheerful throughout to enable the dog park to become a place where both owners and dogs want to hang out.

The work continues: Last week, Sylvia and three volunteers (Justin, Adam, and Pete) installed pee posts to try and deter the dogs from peeing on the trees that are coming. On the subject of dog waste, we still find we have to pick up a ton of dog poop each week deposited by dogs whose owners are not paying enough attention. It is really really important to keep this space as sanitary as we possibly can. If you see one - pick it up. Others will do likewise! Great improvements but we still need contributions so we can keep the park supplied with poop bags (not supplied by the city) and so that we can renew the mulch every six months or so. We have noticed that park attendance has more than doubled. This small but precious patch of land is being heavily used. Please show your appreciation with a donation and also offer to help. Contact us on: FreedomBarkwayATL@gmail.com. We are also on Facebook and Instagram.



# MAKE YOUR EVERY DAY EXTRAORDINARY

Sustainably produced  
wine, sourced mindfully  
from all over the world,  
right to your  
neighborhood shop.

---

Natural Excellence  
with  
Savi Provisions

PURVEYORS OF ORGANIC FOODS,  
FINE WINE AND SPIRITS



saviprovisions.com  
287 Elizabeth St NE, Atlanta, GA 30307

## Thank Our Businesses!

The following businesses partnered with us again in selling advance tour of homes tickets. Please give them a shout out when you frequent their stores. Small businesses are the heart and spirit of Inman Park. Shop local. Thank you!

- A Cappella Books, 208 Haralson Ave.
- The Collective, 723 Lake Ave.
- Little 5 Points Pharmacy, 484 Moreland Ave.
- Revolution Donuts, 785 Edgewood Ave.
- VinoTeca, 299 North Highland Ave., Suite T

## Springvale Park's New Deity/Resident

Thanks to Allison Gordon for her hard work in coordinating the construction of a beautiful new sun goddess in Springvale Park by local artist Amy Senn. Photos in black and white do not do justice--she is "a wonder to behold in person."



## The Shady Hollow Mysteries are here!

"My favorite new comfort reads.  
The plotting is sharp, the prose lean  
and the atmosphere pure joy."  
-- Sarah Weinman, *New York Times*



Perk: Partly plotted on an  
Inman Park porch!

Available at all bookstores, including A Cappella Books and Virginia Highland Books

Go to [juneaublack.com](http://juneaublack.com) for more info

# Walking Tours of Inman Park

By Lynn Curtis Koehnemann • lkoehnemann@gmail.com

Numerous guided tours of Inman Park are offered by car, bike, trolley and Segway. But a guided walking tour of a place allows us to observe details and features we might miss entirely if viewing from a vehicle. Several excellent walking tours of Inman Park introduce us to the neighborhood's history, architecture and trees. The tours are led by docents - extensively trained by the sponsoring entities - who also bring their own expertise and perspectives to each tour.

**HistoryTour:** A long-standing walking tour led by experts in Inman Park's history is sponsored by The Atlanta Preservation Center. The tour is Atlanta's First Planned Suburb - Inman Park. In this tour, participants discover the distinctive features of Inman Park's architecture, such as Victorian, Craftsman, and Romanesque Revival and see inside the historic Trolley Barn. The Tour is about one hour. Tour registration costs: Non-Member: \$15, Member: \$10, Senior/Student/Child: \$7 [www.atlantapreservationcenter.com](http://www.atlantapreservationcenter.com)

**Arboretum Tour:** In 2021, Trees Atlanta added the The Inman Park Neighborhood Arboretum Tour to its calendar. Participants experience a selection of 30 trees from the Inman Park Arboretum and hear about the early history of the development of Inman Park. This Walking Tour is offered on the first Friday of the month at 9:30 am. The tour takes one and a half hours. Registration is free; a donation is encouraged. [www.treesatlanta.org](http://www.treesatlanta.org)

**BeltLine Tours:** The Trees Atlanta Walking Tour of the BeltLine's Eastside trail is one of its most popular. Participants view the Atlanta BeltLine Eastside Trail and learn about local history, public art, and the Atlanta BeltLine Arboretum. The tours begin behind the prior Parish Restaurant, 240 North Highland Ave., and finish near the Ponce City Market. Check the Trees Atlanta Calendar for dates. The tour takes one hour. Registration is free; a donation is encouraged. [www.treesatlanta.org](http://www.treesatlanta.org)

**Carter Center:** The Carter Presidential Library is located on 35 landscaped acres with a view of the Atlanta skyline. Highlights of The Museum include a life-size replica of the Oval Office and an Interactive Map Table that takes you around the world to monitor elections and fight diseases. The well-attended Freedom Farmer's Market takes place on the grounds at the Carter Center Saturday morning, year-round. Access to the grounds and the market is free and museum admission is free to children under 16. Admission for Seniors, Military & College Students with ID is \$10 and the charge for adults is \$12. [www.jimmycarterlibrary.gov](http://www.jimmycarterlibrary.gov)

## New Kids on the Block

By Jim Abbot • abbot.jim@gmail.com

A newly planted shade tree is not unlike a newborn baby. The proud papa or mama thinks, "How wonderful!" But -there's this, too: "I wish someone had told me how much I would worry!" Is my tree healthy? Does it need to be watered? Pruned? Staked? Mulched? If only this darn tree could talk!

Please join me in congratulating, thanking, and sympathizing with these new "shade tree parents."

At the bottom of Hale Street, Boon Boonyapat's maple will eventually shade his corner of the intersection. Next door, Ashley Perko and Will Pickeral's blackgum will rival Boon's maple for fall color. Up on Ashland, Martha Staid and Andrew Stein's beech will outlive us all by at least a century. On Dixie, the residents of the Gatsby have not one, not two, but three newly planted cypresses to nurture. Meanwhile, the civic-minded folks at Inman Park Townhomes are providing a home for a pair of oaks, sisters to an oak in Anandi Sheth and Chandan Devireddy's front yard on Spruce. The Schoolhouse Lofts on Edgewood, led by Emily Taylor and Christel Craig, will be raising two oaks. Bobbie and Rod Paul, on Elizabeth, welcomed a new maple into their backyard, outdone only by the two maples behind Jill and Alan Travis's home on Sinclair!

I wish I could tell you exactly how much cooler Inman Park will be because of these 14 new shade trees, how much cleaner the air, how much less runoff, how much lower our energy use, how many more animals will have homes and food, and how much higher our property values will be. What I can tell you is that these new trees will undoubtedly improve our physical, mental, and social well-being. Tree Watch will be planting again next winter. Let us know if you'd like to adopt a shade tree!



TEAM 360°  
ATL

**Ward Bradshaw**  
Realtor®

m. 404.402.3324 o. 404.668.6621  
[ward.bradshaw@compass.com](mailto:ward.bradshaw@compass.com)  
[team360atl.com](http://team360atl.com)  
1409 Peachtree Street NE, Atlanta, GA 30309



Guiding Executives Through  
**STRATEGIC CHANGES**

Strategy Alignment  
People Mobilization  
Results Delivery

Fergal Kearns & Janice Darling

✉ [info@crossing-point.com](mailto:info@crossing-point.com)  
🌐 [www.crossing-point.com](http://www.crossing-point.com)

# Thank You to Our 2022 Theater Night Sponsors

## TONY

Trisha Bell - Bell Family Foundation for Hope  
Cathy & Bo Bradshaw  
Regina Brewer & Joe Castellano - Intown Vintage Homes and  
Sharon Gay & Neil Schemm  
Ruth & Al Caproni  
Jennie Casaday  
Ann & Jeff Cramer  
Sally Dorn - Otis Ferguson Realty  
Aimee & Nick Franz  
Anne & Charlie Henn  
Megan Holder & Dan Chandler  
Ayesha Khanna & David Edwards and Michelle Nunn & Ron Martin  
Beverly & Kurt Miller  
Wendy & Bob Patterson  
Ruth Wall

## PATRON

Eileen Segrest Brown  
Judy Clements  
Alex & Andy Coffman  
Helen & Clark Cunningham and Nancy & Bob Morrison  
Katie & Eric Goldberg  
Marilyn & Bill Grist  
Leigh Hays - Atlanta Fine Homes Sotheby's International Realty  
Tamara & Mark Jones  
Dr. Janet & Fergal Kearns - Intown Dental Center  
Melissa Miller - The Pat & Melissa Group  
Veronica & Brian Roof  
Midge Sweet & Christiane French, Bobbie & Rod Paul, and  
Susie & Lee Winton  
Cindy Weinbaum & Mark Prausnitz  
George Veneziale, In Memory of Margie Veneziale

## FRIENDS

Janice & Dave Darling  
Marie Wooldridge & Chris Curley

## AUCTION DONORS

Cathy Bradshaw  
Eileen Segrest Brown  
Dad's Garage  
Sally Dorn - Otis Ferguson Realty  
Cristy Lenz - Food Tours Atlanta  
Aimee & Nick Franz  
Megan Holder & Dan Chandler  
Horizon Theatre  
Kitty Dare  
Jody & Jake LaJoie  
Sandi Parker & Hussain Moosajee  
7 Stages  
Wisteria

# May 24 TSPLOST Vote - \$3M for Euclid Ave

By Lauren Welsh, Executive Director of the Little 5 Points Alliance • [info@l5pa.com](mailto:info@l5pa.com)

Make sure you've marked May 24 on your calendars and turn out to vote on the City of Atlanta's TSPLOST (Transportation Special Purpose Local Option Sales Tax). The Little 5 Points Alliance was able to advocate to get a \$3 million transformation of Euclid Avenue in the heart of the district on the City's TSPLOST project list.



The project includes building new sidewalks, removing a slip lane for cars, adding new trees and planters, creating a mid-block crossing, painting artistic crosswalks, fixing the intersection of Austin at Lake, and more. You can learn more about the project and the Little 5 Mobility Study on the L5P Alliance's website at [l5pa.com](http://l5pa.com).

For background, the City of Atlanta currently has a \$3 billion backlog in infrastructure needs over the next 20 years. To help address the backlog, the City has proposed a \$750 million investment through sales tax and bonds to be voted on in May. This will serve as a renewal of the existing TSPLOST and Bond program Atlanta voters approved in 2015 ending March 2022.

You can find more information on TSPLOST/Bond projects both on the City's ATL DOT website at [atl.dot.atlantaga.gov](http://atl.dot.atlantaga.gov) as well as on the Atlanta Bicycle Coalition's

website at [atlantabike.org](http://atlantabike.org). Comments and questions related to this program can be sent to ATL DOT.

## Some Festival Thank Yous

Special Thanks for the Festival Flicks Video shown during the 50th Inman Park Festival and Tour of Homes, taken from videos of 1972, 1973 and 1975 Inman Park Festivals, as well as photos, slides and documents in the Emory Archives and personal collections. To expand and continue the story of Inman Park, we need everyone to donate photos, slides, articles and other memorabilia. (i.e., clean out closets, attics and basements!).

Fletcher Holmes, an Inman Park kid since 1978  
Marianna Lines  
Fran Burst-Terranella

Janet Sowers  
Sally Dorn  
Susan Crawley  
Jerry Adams

Photographers:  
Beverly Hensley Bradley  
Fred Bradshaw  
Elizabeth Dean  
Beverly Miller  
Steve Hays  
Janet Sowers  
Judy Clements  
Ben Mitchell  
Gretchen MacLachlan  
Cathy Bradshaw

For Equipment and Technical Support:  
Magnum Company  
Bobbie Paul  
David Paul, Inman Park kid  
Ashley and John Brimer

Location Support:

The Trolley Barn and  
Lisa Milko  
Carolyn Stine  
McLaughlin

Heavy Lifters:  
Ward Bradshaw, Inman  
Park kid  
Dan Fossitt  
Rylan Gordon  
Kirk Miller  
Nick Priestly, Inman  
Park kid

The 50th Anniversary of Festival Committee for production of video, Pioneer Brunch and The Special Advocate:  
Sally Dorn, Chair  
Cathy Bradshaw  
Fran Burst  
Jan Keith  
Lynn Koehnemann  
Molly Malone  
Marnie McMurry

Pat Westrick

Pioneer Brunch at Susan Bridges' home  
Stacey Eames,  
Highland Bakery  
Diane Floyd  
Steve Franklin,  
Java Vino  
Nate Morrill  
Todd Tharp,  
Hutchinson's Finest

50th Anniversary Special Festival Advocate:  
Janet Sowers  
Molly Malone  
Susan Crawley  
Patti Willard  
Sally Dorn  
Darcel Stewart - UPS Store #1096  
Chundra Rambert, Store Manager

## A Heartfelt Thanks from APC

The following is a message from David Yoakley Mitchell, Executive Director of the Atlanta Preservation Center, sent in thanks for the platform provided by Inman Park Festival:

Thank you, 1,000,000 times, for this honor. To use the platform of your 50th anniversary to communicate our mission/organization with your festival, patrons, residents and our city means more than any of you will ever know.

It has been said: "Where you come from is gone, where you thought you were going to was never there, and where you are is no good unless you can get away from it. Where is there a place for you to be? No place... Nothing outside you can give you any place... In yourself right now is all the place you've got."

Flannery O'Connor

What Inman Park has done for 50 years and what Inman Park has meant to this city is without comparison. Thank you - THANK YOU -

Thank you for doing this - Thank you for all you have done to preserve your neighborhood, and most of all - THANK YOU for being what makes our mission have meaning now and forever!

# IPNA Meeting Minutes: April 20, 2022

President Cristy Lenz called IPNA to order at 7:38pm. There were 60-70 participants.

Welcome/Introduction of newcomers

Thanks to Ben and Jerry's for Ice Cream

Thanks to neighbors

Newcomers:

Richard Western

Zach Hamilton- Colquitt

Jesse Gibbs- Edgewood

Sidra Gross- North Highland

Andrea

Ashley

Lots of new folks by Edgewood, Druid Cir, Waverly Pl! (sorry if we missed your name!)

Police officers' report

Lt. Carroll: Crimes of opportunity, recent increase in car break-ins and reports of stolen guns, laptops, key fobs. When you are stopping to get gas or run into store, be aware of your surroundings.

Sgt Soukup: Patrol added new officers, added two new day watch shifts.

Minutes of last meeting – (motion to approved, seconded and supported)

Announcements

- Festival – Jane Bradshaw Burnette

- o We are ready for festival, we have permit and insurance. Two movies of past festivals will be playing on loop at the Trolley Barn, parade, Tour of Homes. Come to festival and volunteer if you haven't already.

- o This year we have fine art prints, signed by artist, to commemorate 50th Anniversary of the Inman Park Festival.

- o There will be almost no parking in the neighborhood, encourage visitors to take MARTA, walk, bike. Buy merchandise, volunteer, reminder to check road closures and tow zones.

- o Booklet for Tour of Homes – will be available before festival. Eventeny will have information for digital tickets up soon.

- Inman Park Precision Attaché Case, recruiting new members. Join at parade kickoff by 1:55 Saturday – bring briefcase, umbrella!

- Springvale Artist, Amy Senn, Butterfly Goddess – installation is delayed, but will be up before festival.

- Proclamation from Senate – Nan Orrock and Amir Farokhi presented proclamations to recognize Inman Park's 50th Anniversary. Ceremony in front of new mural along the cleaners by Lake and Elizabeth.

- Recognizing parade marshals the Westrick's, Kathy Bradshaw, others for all the work put into Inman Park Festival for last 50 years.

Elected officials' reports

- None present.

IPNA officers' reports

President

- Art on the Sidewalk Bike Racks – proposals will be presented back to neighborhood in May.

- Wisteria Rezoning – proposal to keep outdoor dining area. Jonathan and Amy have been helping with this. Immediate neighbors meeting needed, vote in May.

- Freedom Park Master Plan (<https://freedompark.org/>)

freedom-park-master-plan/) – Sally Dorn, IP Freedom Park Conservancy representative. Master Plan came to IP in July 2021, neighborhoods had suggested changes. At meeting it was agreed the revised document would be brought back to neighborhoods for additional review, and then brought to NPU. This final neighborhood review has not happened. The new President of Board of the Conservancy said the Parks Dept has taken over the plan, and there was no longer the flexibility to have the neighborhood review. Heard that there is now new legislature on the floor for inclusion in the comprehensive master plan, language in 'where as' clause is alarming. Freedom Park is intended to be a passive park, but now interest in changing this nature and limitations on gathering, etc. This is coming before NPU for a vote in May, timing is critical. Proposal to have Cristy send letter to our elected officials on behalf of the neighborhood.

- o Q: Should we also as individual citizens reach out to representatives and Parks Department to make comment and encourage additional neighborhood review? A: Yes, and more information and guidance will be shared in email.

- o Motion to have Cristy send a letter to the city to request Freedom Park Conservancy to come back to the neighborhoods before the next NPU and legislative process. Motion seconded; motion passed.

VP of Historic Preservation

- 944 Austin – Motion to support, seconded. Unanimous in favor.
- o Adam Stillman architect. 1 story, all work on backside of house. Roofline will more appropriately match the style of house. Existing deck removed, back of house extended a little more. No variances.

- o Immediate neighbors meeting on April 18th, no one showed up for meeting. Historic Preservation had only favorable comments.

- 370 Sinclair – Motion to support, seconded. Motion passes.
- o Adam Stillman architect. Rear addition and reworking previous additions. Corner lot, very visible, not requesting any variances. Kitchen will be bumped out about 10 feet out back. Roof lines similar to front of house.

- o Immediate neighbors meeting on April 18th, 8 neighbors attended. 8 in favor, none opposed. Historic Preservation had nothing but positive comments.

- 894 Edgewood – Vote 27 support, 27 oppose, 10+ abstain. President breaks tie – opposed.

- o Randy Pinkler architect, Jesse Gibbs is owner who will be presenting to IPNA. Proposing to add rear addition and front porch where there is currently a stoop. Would like to interact with their neighbors. Traditional WWII era home on Edgewood. Adding third bedroom, second bathroom, porch in rear – no issues with the plans for the back of the house.

- o Immediate neighbors meeting last weekend, 11 immediate neighbors in attendance, 6 of these voted against the current plans, 5 in favor. Of households 3-2 in favor. Historic Preservation (7/10) said we shouldn't do anything with the front porch. All immediate neighbors are supportive of plan without the porch.

- o Q: Does lot coverage remain within prescribed limits? Yes currently at 44%, proposed is 49% and allowable is 55%.

- o Ian – immediate neighbor. Majority of concerns about front of house, not about back. Historic guidelines say we should preserve front porches, front stoops, spatial relationships. 872 Edgewood is an identical twin. Small house preservation in the neighborhood is just as important as the large properties.

- o Q: What year was house built? A: 1930.

- o Comment: Stoop might not be original, would support the proposed plan if could be determined to not be original design. These houses look out of place, thin spindle posts, nothing else like it in neighborhood. Porch he is proposing would match others on the street.

- o Is there a way to retain integrity of the architecture and still get him a front porch? We can only vote on current plans, additional

designs can be brought to the IPNA for a vote. Research what was in place before, and consider a covered porch on side of house.

- o Q: What would the proposed look like? Images shown, mirroring smaller porch at 902 Edgewood.
- o Comment: Amy Higgins – Thin Doric columns are not appropriate to style of house, not right proportions. Would be better to replace with or without porch.
- o Motion from Amy: Motion to support application with the proposed porch to better fit in with street face. Midge Sweet seconded. Vote 27 support, 27 oppose, 10+ abstain. President breaks tie – opposed.

VP of Zoning

- One Flew South – located by neighborhood line, on beltline in O4W. NPU M & NPU N. James Beard award winner, only airport restaurant that gets reservations. Neighborhood supportive.
- Villa de Grip – committee with zoning representation working on the design and plan. Switching from Zoning to Historic Preservation. Will have a joint meeting between Zoning and Historic Preservation, then immediate neighbors meeting, then will come to neighborhood in May.

## Planning

## Treasurer

Communications

- Stories from Festival

## Public Safety

## Secretary

## NPU Report

## Committee Reports

- L5PA Chris Curley: Atlanta Bond/TSPLOST – highlighting accomplishments of TSPLOST 1
  - o East Side Trolley Trail
  - o Dekalb Ave
  - o Edgewood Ave
  - o Stop signs, repaving, resurfacing
  - o Natatorium
- New TSPLOST 2 - \$700M in funding, \$300M through TSPLOST. Continuation of .4 cent sales tax already in place. \$400M is

floating a bond already in place and collected with property taxes.

- o Euclid Ave Safe Space & L5P Streetscape– design and construction document (shovel-ready) and it's in the latest TSPLOST funding. Up for a vote on May 24 Referendum. \$3M is allocated for this project.

## Transportation

## Education

- Eric Goldberg: Update on Grady Cluster. APS revising districts because of overcrowding. Currently 2 options before APS for 2023-2024:
  - o OPTION 1: Inman Park kids to Virginia-Highlands SPARK in case where Inman Middle School becomes another elementary school K-5.
  - o OPTION 2: Inman Park kids would stay at Mary Lin in case where Inman Middle School and SPARK operate as a dual campus. SPARK would have grades K-2, and Inman Middle School would have grades 3-5.
  - o APS is poised to make a decision on this between May-June. IPNA Education committee taking position that either option is acceptable. There may be some disappointment among families if there is a change, but both schools are exceptional options.
  - o Last year and half to two years there we've engaged the neighborhood, surveyed, discussed, collected feedback. This position reflects the neighborhood. Full and complete engagement of the neighborhood.

## Filming

## Old business/New business Adjourn

- Board change over in May/June – VP of Zoning is the only position we are replacing at this time. There is a nominating committee, and let us know if you know anyone with interest. Expert knowledge of zoning is not required, we have great expertise in the neighborhood to lean on and learn from.
- Inman Park Festival! Over 1,100 Tour of Homes tickets already sold. It's going to be great!

Motion made for the meeting to adjourn, seconded and passed. Meeting adjourned at 9:13pm.

# Springvale Park Update

By Beau Weidman • g.weidman@comcast.net

They always go by year after year, but the flowers of Springvale Park show off in slightly different configurations each Festival. This year we were treated to a variety of flowers blooming from our shrubs and bulbs. While many were earlier and others will be later, there was quite a show.

Deciduous azaleas are my favorite. The Festival bloomers included the reliable Alabama, the Austrinum hybrids 'Rising Sun' and 'Four Kings', Flameum and its hybrids 'Mooshatano' and 'Solar Glow'. These are often confused with its Georgia neighbor Calendulaceum, which blooms much earlier. Sometimes nursery sellers provide them generically as flame azaleas. Maybe next month we can consider some aspects of these species to help identify those with the highest probability of being a Festival bloomer. The biggest surprise was what used to be the May bloomer Atlantic and its cultivar 'Marydel'. They flowered two weeks early.

Rhododendrons were out in force anchored by our 2005 'Nova Zembla' and its younger companions. Right across the steps was the other shrub we planted during that period, the azalea 'Old Yellow'. Other rhododendrons were 'Chio', 'Percy', 'Charm', 'Catawba Borsault', 'English Roseum', 'Roseum Elegans' and 'Scintillation'. Another wonder was our guest bred for the low mountains west of

New York City, the 'Ramapo'. It bloomed in late March but for some reason bloomed a second time at Festival. This is the smallest leaved of the true rhododendrons and appears a lot like an azalea. Georgia gardeners take great care to keep this hybrid well watered during the summer.

Mountain Laurel budded. Cultivars 'Elf', 'Pristine' and 'Caroline' were to be seen. Red Calycanthus appeared.



The small pilot project with Shoals Lilly bulbs along Springvale Creek was a Festival success. You 2021 park volunteers have proven what these beauties can be in the future. To use the common terminology, the 'Coastal' flowered spider style. The 'Columbus' can be expected to be the second flower around Mothers Day and the 'Tifton' the third near Labor Day. Keep SVP beautiful. Help to water these shrubs during the hot and dry months of our Georgia summer. See you when we get together for the Oktoberfest

volunteer weekends.

## Sign Up For Our Monthly Newsletter Updates Today!

Your trusted source for local market conditions, real estate news, events and so much more. Scan the QR Code below to sign up for our monthly newsletter updates.



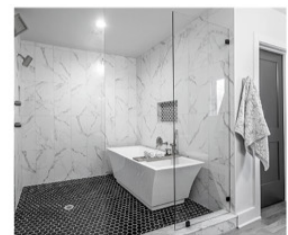
Jeff Raw

404.786.6635  
jeffraw474@gmail.com  
www.rawrealestategroup.com



## RAW REAL ESTATE GROUP

BUY/SELL/RENOVATE/BUILD/INVEST



**INTOWN DENTAL CENTER**  
QUALITY CARE YOUR FAMILY CAN TRUST

ALL MAJOR  
PPO INSURANCES  
ACCEPTED

**Celebrating 10 years in business  
@Edgewood Retail Center**



LOCATED ABOVE  
**GameStop**



We are a family-owned practice offering comprehensive general and cosmetic dentistry. We are insurance friendly and are currently accepting new patients.

- Janet Kearns DDS, FAGD

MAKE  
APPOINTMENT  
**404 889 8370**  
Seeing patients ages 3+ [www.intowndentist.com](http://www.intowndentist.com)



## LEIGH HAYS REALTOR®

SELLING INMAN PORCHES SINCE 1996

### BUYING

EXPERIENCED WITH  
NEGOTIATION IN THE  
CURRENT MARKET

+

### SELLING

STRATEGIC MARKETING  
PLAN BACKED WITH  
PROFESSIONAL MARKETING

CONTACT ME FOR ALL OF YOUR REAL ESTATE NEEDS  
[leighhays.atlantafinehomes.com](http://leighhays.atlantafinehomes.com)



### LEIGH HAYS

c. 404.402.4554  
o. 404.874.0300  
[leighhays@atlantafinehomes.com](mailto:leighhays@atlantafinehomes.com)

Atlanta Fine  
Homes

**Sotheby's**  
INTERNATIONAL REALTY

1555 Peachtree Street NE, Suite 100 | Atlanta, Georgia 30309

Atlanta Fine Homes, LLC fully supports the principles of the Fair Housing Act and the Equal Opportunity Act.  
Each franchise is independently owned and operated.

# Agenda

**May 18, 2022**

**IPNA Meeting • 7:30 p.m.**

**Location: Trolley Barn & Zoom**

I. Welcome & Introduction of Newcomers

II. Police Officers' Reports

III. Minutes of Last Meeting

IV. Announcements

V. Elected Officials' Reports

VI. IPNA Officers' Reports

A. President

B. Planning

C. Zoning

D. Historic Preservation

E. Public Safety

F. Communications

G. Treasurer

H. Secretary

VII. Committee Reports

VIII. Old Business

IX. New Business

X. Adjourn

***Check [inmanpark.org](http://inmanpark.org) the day of the meeting  
for any agenda updates***

## **Doggo the Month: Doakes**



Ears out to the side, gonna fly away.



## **Good to Know**

### **Inman Park Neighborhood Association (IPNA) membership:**

Inman Park Neighborhood Association (IPNA) membership: Available to those who live within or own property within the boundaries of Inman Park. Membership is \$5 with online registration at [inmanpark.org](http://inmanpark.org). Membership allows you to vote (see bylaws online for details), gives you access to the directory and makes you eligible for special neighborhood events. In addition to being a member of IPNA, you may register for the Inman Park Security Patrol (IPSP) which staffs off-duty Atlanta Police officers to patrol our neighborhood. There are four levels of commitment beginning at \$50 per year. IPNA meetings are held at 7:30 p.m. on the 3rd Wednesday of each month at the Trolley Barn. IPSP membership is based upon a rolling annual membership term. Your renewal date is one year from your membership date and again every year after that.

### **Advocator**

Send submissions to [advocator@inmanpark.org](mailto:advocator@inmanpark.org) before the 20th of the month for publication in next month's issue.

### **Websites**

[InmanPark.org](http://InmanPark.org)

[InmanParkFestival.org](http://InmanParkFestival.org)

[Facebook.com/InmanPark](https://Facebook.com/InmanPark)

Instagram: @inmanpark

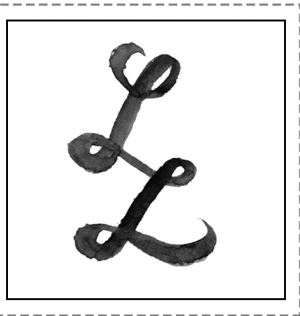
### **Report All Crimes: Call 911**

IP Security Patrol: 404-414-7802

L5P Mini-Precinct: 404-658-6782

### **L5P Business Association**

[www.little5points.com](http://www.little5points.com)



LOVE LETTERING

Custom Hand-Lettering

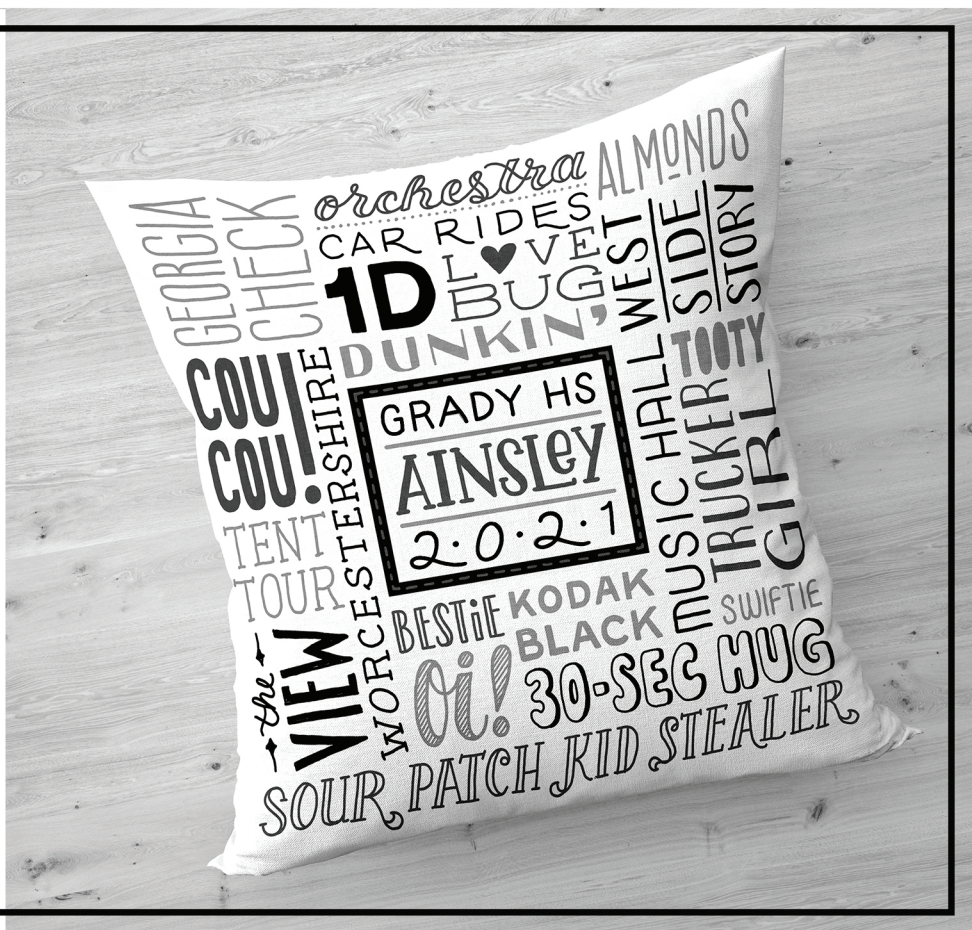
“Legacy Art”

Custom Quotes

Calligraphy

by local Inman Park Artist,  
Colleen Finn

*Inquiries, please contact  
colleen@colleenfinn.com*



## Protect our pollinators



**while keeping your family  
safe from dangerous,  
disease-carrying mosquitoes.**



### With Bug Busters, you can do both!

Our proven mosquito service will help you protect your family from mosquito-borne pathogens like the West Nile virus and Zika, without harming your yard's natural population of pollinators like bees.



770-517-0200

[www.BugBustersUSA.com](http://www.BugBustersUSA.com)

**BUG BUSTERS**

Pest • Termite • Mosquito • Wildlife • [www.BugBustersUSA.com](http://www.BugBustersUSA.com)

## IPNA Pioneers No Longer With Us



Eugene Bales  
Glenn Bridges  
Jac Cooper  
Hilda Corbin  
Tommy Darden  
Jeff Dees  
Clark Douglas  
Rod Eaton  
Phillip Flaig  
Robert Griggs  
Jaap Groen  
Doc Harrell  
Sandra  
Heartfield  
Hope  
Herrington  
Pat Herrington  
Michael  
Hoover  
Ross Ingram  
Albert Jenkins  
Jim Kornder

Jim Kourkoulis  
Harry  
Kuniansky  
Richard  
Long  
Wayne Maddux  
Oreon Mann  
Bill McMurry  
Henry Moog,  
Jr.  
Holly Mull  
Chuck Nairn  
Bill Owens  
Justis  
Randolph  
Christine  
Sibley  
Georgia  
Simmons  
Mary Singleton  
Wayne Smith  
Mimi Soper

John Soper  
Martha Stamm  
John Sweet  
Ken Thompson  
Larry  
Thompson  
Ed Turner  
Lynn Van  
Buren  
Marjory  
Van Dorp  
Margie  
Veneziale  
Dr. Jim Wilbur  
Louise Wilbur  
David Willard  
Wayne  
Williams  
Jay Wilson  
Mary Lou  
Wilson  
Katie Yelverton