

# THE Inman Park Advocator



Atlanta's Small Town Downtown News • Newsletter of Inman Park Neighborhood Association

advocator@inmanpark.org • inmanpark.org • 245 North Highland Avenue NE • Suite 230-401 • Atlanta 30307

June 2022

Volume 50 • Issue 6

## President's Message

## New Members on IPNA Board

By Cristy Lenz • President@inmanpark.org

It's June. That means we're adding new members to the IPNA Board. Each board member's term is two years. Each year we have half the board roll off and add new members. This time around we're welcoming VP of Planning, Matt Cherry. Matt lives on Virgil Street with his wife Anna and son Max. He is a Director of Landscape Architecture & Urban Design at Lord Aeck Sargent, an Atlanta-based architecture, planning and historic preservation firm. Throughout his 20-year career Matt has led dozens of Atlanta-based neighborhood planning and design efforts. Recent projects include the Midtown Garden District Master Plan, Hulsey Yard Neighborhood Master Plan, Little Five Mobility Study, Pullman Yard and Howard Middle School. Matt is an avid gardener and likes to trade plants with neighbors!

We also welcome Todd Jackson as VP of Zoning. Todd moved to Atlanta in 1995 to join a restaurant holding company where he worked in construction and real estate for 20 years throughout most the United States. After living in Sandy Springs for 14 years, he and his partner moved to Inman Park in 2019 to one of the rentals they own and quickly discovered the historic charm and friendly welcoming neighbors in the community. Todd enjoys his time in Inman Park and recently inquired about becoming more involved when it was announced at the most recent IPNA meeting a Zoning position was opening up on the Board. With Todd's real estate knowledge, he felt it would be a fun and additional way to be involved with the community and continue to meet more of the IPNA family. You may have noticed him and his partner over the past 2 ½ years out walking in the neighborhood with their (2) 2-year old Golden Doodles.

Thanks to outgoing Board Members Regina Brewer and Pat Pontius for their time and service on the board. Regina Brewer has her Masters in Historic Preservation. Her expertise helped guide and inform multiple projects



during her term. She will remain on the Historic Preservation Committee. Pat Pontius has a dual masters in planning and real estate development. He brought his skills to the board as VP of Planning. We want to offer our thanks to both Regina and Pat for taking their time to volunteer and serve on the board.

If you would like to get more involved please reach out. We are always looking for members of our community to get more involved.

**Pleasing  
Pollinators**

Page 6

**Freedom  
Park  
Update**

Page 8

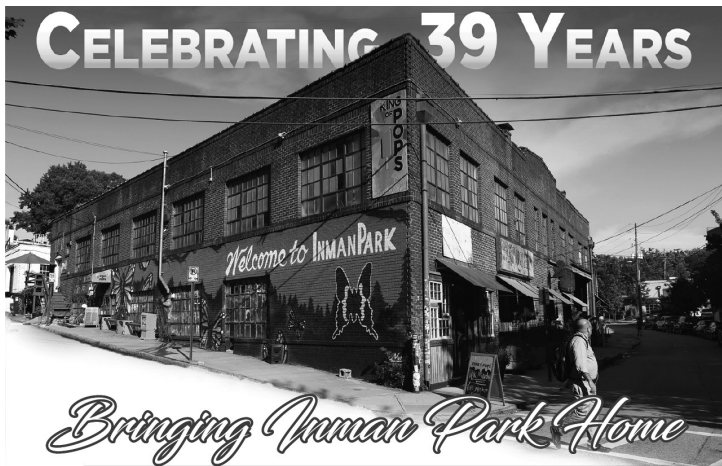
**IP Fourth of  
July Party!**

Page 9

Advertise in the Advocate!

ads@inmanpark.org

CELEBRATING 39 YEARS



*Bringing Inman Park Home*

## Your neighborhood Specialists.

For your Real Estate needs,  
Please Call Us or visit online  
404-371-4419 (Re/Max Cityside)  
404-276-7736 (Melissa)  
[www.patandmelissagroup.com](http://www.patandmelissagroup.com)



RE/MAX  
**METRO**  
atlanta | cityside



WORK CLOSER TO HOME

# COWORK ON THE BELTLINE

404.475.4850 • [ALKALOID.NET](http://ALKALOID.NET)



ALKALOID  
NETWORKS



LITTLE 5 POINTS CENTER FOR ARTS & COMMUNITY



## JUNE Events Calendar

1083 Austin Ave NE Rm 108, Atlanta, GA 30307  
[little5pcc@gmail.com](mailto:little5pcc@gmail.com) • 404.522.2926  
[www.L5pcc.org](http://www.L5pcc.org)

*Masks will be required at all events and upon arrival at the blood drive. Please contact us with any questions.*

### American Red Cross Blood Drive

LOCATION: Our Shifalo Cafe  
DAY/TIME: Friday, June 10th, 10:00am-3:00pm

### Mask/Gateway Presents "Circle of Masks"

LOCATION: 1083 Austin Ave, NE Atlanta, GA 30307  
Gateway's Art Space  
DAY/TIME: Sunday, June 19th, 3:00pm - 5:00pm

### Emory University Community Health Night

LOCATION: Our Shifalo Cafe  
DAY/TIME: Thursday, June 23rd, 4:00pm-8:00pm  
• Covid & STI Testing  
• Walk-ins welcome, Pre-registration preferred  
• [www.goemory.org/contactus](http://www.goemory.org/contactus) for info.



# Inman Park Neighborhood Association

## Officers

President, Cristy Lenz  
president@inmanpark.org

VP • Planning, Matt Cherry  
planning@inmanpark.org

VP • Zoning, Todd Jackson  
zoning@inmanpark.org

VP • Historic Preservation, Sandy Hoke  
historic.preservation@inmanpark.org

VP • Public Safety, Tom Baldwin  
public.safety@inmanpark.org

VP • Communications, Emily Gordon  
communications@inmanpark.org

Treasurer, Phil Disher  
treasurer@inmanpark.org

Secretary, Alex Ganim  
secretary@inmanpark.org

## Advocator

Editrix  
Carla Jeffries

Staff  
Marge Hays, Glenda Minkin, Julie Noble,  
Pat Westrick

Advertisement Team  
Beverly Miller, Melissa Miller, Sara Wittich

Graphic designer  
Colleen Finn

Submissions  
advocator@inmanpark.org

Printed by Darcel Stewart, The UPS Store

## Chairs & Coordinators

### Archives

Teresa Burk • tburkus@gmail.com • 404-449-3000

### Beautification

Barbara Leach • leachbarbara@bellsouth.net • 404-521-2672

### Sidewalks

Millie Astin • sidewalks@inmanpark.org • 404-293-9012

### Education

Eric Goldberg • education@inmanpark.org • 678-467-2096

### Festival 2022

Jane Bradshaw Burnette • jcb5858@yahoo.com

### Freedom Park Conservancy

Sally Dorn • sdorn47@comcast.net

### Graffiti

Nelson Ray • NelsonRayATL@gmail.com • 404-561-6101

### Hospitality

Patsy Fisher • hospitality@inmanpark.org • 404-550-0790

### Inman Park Tree Watch and Arboretum

Jim Abbot • abbot.jim@gmail.com • 404-281-0638

### Lifelong Inman Park

Cathie Berger • lifelong@inmanpark.org • 678-429-5221

### NPU-N Representative

Scott Evans • npu.n@inmanpark.org • 404-822-3884

### Social

July Fourth: Carol Mitchell • carol@the-mitchells.org • 404-659-2579

Holiday Party: Cristy Lenz • 404-822-3884

Porch Parties: Pat & Richard Westrick • patwestrick@realtor.com • 404-388-6466

### Special Events

Karen Goeckel • kgoeckel@me.com • 678-612-1776

### Springvale Park

Beau Weidman • g.weidman@comcast.net • 770-715-3403

Amy Higgins (Master Plan) • ahigginsaia@gmail.com • 404-593-8253

### Transportation

Janice Darling • transportation@inmanpark.org • 678-488-1925

## 2022 Inman Park Book Club

Meets at 7:00 pm on the last Tuesday of most months.

Most book selections are available at our neighborhood bookstore:

**A Cappella Books**

208 Haralson Ave, Inman Park

10% Discount! Shop local!

### June 28

Linda Dunham, 12 1st Ave.  
(Kirkwood),  
"The Correspondents"  
by Judith Mackrell

### July 26

Diana Glad,  
960 Edgewood Ave.  
"The Masterpiece"  
by Fiona Davis

NOTE: You MUST be fully vaccinated and boosted to attend face-to-face book club events

Please contact Jan Keith ([janetbkeith@gmail.com](mailto:janetbkeith@gmail.com)) with any questions.

Get your IPNA vinyl banners, cloth masks and Historic Inman Park (HIP) stickers for sale at Intown Business Center!



## Neighbor to Neighbor

Inman Park neighbor volunteers are ready to assist anyone needing short-term help. For example:

- Getting to medical appointments
- Preparing meals or help with pets while recovering from illness
- Managing daily activities

Visit [www.inmanpark.org/lifelonginmanpark](http://www.inmanpark.org/lifelonginmanpark)  
Contact Jackie Lawrence (404-272-0024)



## Porch Party!

**Friday, June 24th at 7:30 pm.**  
**Marji McCollough & Dirk Schroeder,**  
196 Waverly Way

**Bring a dish to share and whatever you want to drink.**

**Sign of the Times: We will be restricted to the porch and the yard for our visiting rather than spilling over into the house as we have done often in the past.**

**Questions? Pat or Richard Westrick,**  
**404-388-6466**

## Inman Park Parents!

**Want to stay in the know about current APS (and other parenthood-based) news?**

**Join the Inman Park Parent Google Group to hear the latest.**  
**Email [junoble@yahoo.com](mailto:junoble@yahoo.com) to join.**

Congratulations to Emily and Michael Abraham of DeGress Ave. on the birth of their daughter Lily Ming on March 9.

Congratulations to Abbie and Adam of Virgil Street on the birth of Elliot Star.  
May the Fourth be with him always!

Condolences to Judi Knight and Duanne Solem, Krog St., on the passing of Judi's mom.  
She was 87 years old.

Condolences to the McManus Family, Austin Ave., on the passing of James' mother Alice Sue "Susu."



**WE ARE  
HIRING!**

**Inman Park  
POOL**  
EST. 1992

**LIFEGUARDS  
AND POOL ATTENDANTS**

GREAT PAY AND BONUS OPPORTUNITIES  
TRAINING AVAILABLE

APPLY ONLINE AT  
**SEARSPPOOL.COM**



### Calling All IP Grads!!

Inman Park is proud of our high school, college, and technical school graduates. If you know someone who will graduate this spring or summer, please send the following information to me ([janetbkeith@gmail.com](mailto:janetbkeith@gmail.com)) so the list can be compiled and published in the *Advocator*. Thanks!

- Name
- Street
- School attended
- Degree achieved or plans for the future

Want to keep up with local events, civic activism, and neighborhood content related to Inman Park?

Join our Inman Park Google Group with almost 1000 subscribers.

Email admin Allison Gordon ([alisonggordon@gmail.com](mailto:alisonggordon@gmail.com)) to join.

## IPNA Calendar

**June 15**

### **IPNA Meeting**

Trolley Barn/Zoom  
7:30 p.m.

**June 23**

### **NPU-N Meeting**

L5P Community Center  
7:00 p.m.

**June 24**

### **Porch Party**

See page 4  
for details

**June 28**

### **Book Club**

See page 4  
for details

**July 20**

### **IPNA Meeting**

Zoom  
7:30 p.m.

**July 26**

### **Book Club**

See page 4  
for details

**July 28**

### **NPU-N Meeting**

L5P Community Center  
7:00 p.m.



### IP Caregiver Support Group

If you're concerned about someone with memory loss — a family member, friend, or neighbor — please consider attending the Inman Park Caregiver Support Group. We focus on the challenges of caring for someone with cognitive decline. This free group meets every third Thursday of the month from 4:00 to 5:30 at the Inman Park United Methodist Church. Please contact Moira Keller LCSW if you have questions, 404-290-1630 or [moira.keller@comcast.net](mailto:moira.keller@comcast.net)

# Pleasing Pollinators

By Lynn Curtis Koehnemann • lkoehnemann@gmail.com

Georgia's official state butterfly is the Eastern Tiger Swallowtail. This stunning species uses native trees such as the Tulip poplar throughout its life cycle. Pollinators move pollen and fertilize flowers,

native bees are pollen specialist bees. Specialist bees have evolved a specific relationship with a few or even just one plant species. Sunflowers, goldenrod, blueberries and willow are some of the plants



enabling plants to produce seeds. Many pollinators prefer a specific type of bloom. It is fun to match an insect with a particular shape of flower.

Larger beetles choose large flowers such as magnolias and sunflowers. The omnivorous Ladybug beetle, searching for aphids and nectar, can hide in plants with plentiful foliage such as Butterfly weed (*Asclepias tuberosa* L.), Purple coneflower (*Echinacea* spp.), Black-eyed Susan (*Rudbeckia* spp.) and Coreopsis.

Hummingbirds prefer red funnel-like flowers. Some favorites are Scarlet Honeysuckle (*Lonicera sempervirens*), Crossvine (*Bignonia capreolata*) and Red Buckeye (*Aesculus pavia*).

Bees enjoy many flowers - especially composite flowers such as Gaillardia, Sunflower and Aster. More than one hundred of Georgia's

paired with these bees. While important in pollinating some farm crops, the non-native domesticated honey bee is a significant competitor of native bees if introduced with native plants and native bees.

Butterflies prefer flat flowers for landing. They can draw nectar from deep inside a flower with their long tongues. Favorites of butterflies include the sun-loving Blazing Star (*Liatris*), Purple Coneflower (*Echinacea purpurea*), Sunflowers (*Helianthus* spp.), Giant Hyssop (*Agastache*), Joe-Pye Weed (*Eutrochium* spp.), and Native butterfly weed (*Asclepias tuberosa*) - a species of milkweed. Butterfly weed (*Asclepias tuberosa*) is also a larval food plant of the queen and Monarch butterflies. Goldenrods (*Solidago* spp) are vital for fall-migrating monarchs. At native plant sales, people sometimes request the non-native

Butterfly bush (*Buddleia davidii*). While Butterfly bush does attract butterflies with abundant nectar, butterflies also need host plants to lay eggs and feed their caterpillars. None of our native caterpillars eat Butterfly bush leaves.

Choose plants to attract your favorite butterfly. The Gulf Fritillary and Zebra Longwing prefer the native passionflower (*Passiflora incarnata*). Tiger Swallowtails are drawn to the Tulip poplar, green ash, white ash, sweet bay, and wild cherry. The American papaw (*Asimina triloba*) attracts the Zebra Swallowtail. Elms and willows host the Mourning Cloak, Viceroy and Question Mark butterflies.

Many gardeners in Inman Park have installed native plants as they switch to more sustainable practices. Some have planted big, beautiful patches of native host plants. Ideally, they include permanent, perennial plantings where the soil can be left relatively undisturbed to support pollinator insects. We support these key systems when planting patches of pollinator-friendly native plants and installing shallow water features and landing pads. Choose flowers to bloom from early spring through late fall; this creates the food and habitat needed for pollinators to survive throughout the year.

Visitors to the Latin American Ethnobotanical Garden on the UGA campus in Athens can see living examples of this rich horticultural history. The garden displays 150 culturally important plants native to Latin America to promote the conservation of plant biodiversity and traditional plant knowledge. The LAEG also maintains a small collection of Georgia native trees and shrubs of importance to the native peoples of the Piedmont region.



# Kitty Dare

Mediterranean

## Join Us for Brunch!

Saturdays & Sundays 10:00am-2:30pm

Just steps from your front door

### SHAKSHUKA

Eggs poached, Kitty Dare's Shakshuka: tomato sauce with onions, red bell pepper, black pepper, parsley, saffron, and sweet paprika with garlic bread crumbs. Served with 2 pieces of our homemade barbari bread

### RICOTTA PANCAKES

Ricotta pancakes with a hint of lemon. Served with real maple syrup, berries and mascarpone cream

### SALMON EGGS BENEDICT

Potatoes rosti with salmon cakes and poached eggs, served with a preserved lemon bearnaise sauce and a side of fresh seasonal fruit

### TORTILLA DE PATATAS

Spanish potato and egg cake, onions and charred tomatoes, topped with house-made goat cheese mousse and chives, plus a side of fresh seasonal fruit

### SHRIMP & GRITS

House-made grits served with chorizo, grilled tomatoes, shrimp and our special sauce

### STEAK & EGGS

Grilled 9oz Teres Major steak, served with parmesan scrambled eggs and a side of weekend potatoes with fresh fruit

### FRENCH TOAST

House-made brioche bread, battered in orange and cardamom cream mix, served with powdered sugar, berries and real maple syrup

### PASTA BOLOGNESE

Penne pasta, beef and pork blend, slow roasted for eight hours with aromatics of mirepoix and fresh bay leaves, topped with fresh parmesan cheese.

### ONION SOUP

The most iconic French comfort food, served with croutons and melted gruyere cheese

### LABNE & FRUIT

House-made labne with chef's choice of fruit and barbari bread

### SUNDAY SCRAMBLE

House-made labne with chef's choice of fruit and barbari bread

### SUNDAY OMLETTE

Tomatoes, provolone cheese and fried zucchini, served with potatoes and fresh fruit

### BRUNCH BURGER

An all-beef patty blend of ground chuck, brisket, and short rib, provolone, bibb lettuce, roma tomato, caramelized onion, grilled pancetta and red pepper/roasted garlic aioli, topped with a fried egg and served on a brioche bun with a side of brunch potatoes

### CAESAR

Chopped romaine hearts, parmesan cheese, grilled pancetta, fried capers, croutons and caesar dressing

### GREEK

Romaine lettuce, kalamata olives, cucumber, feta cheese, red onion and tomato vinaigrette

### SIDES

roasted potatoes • fries • fresh fruit • pan-seared bacon • koobideh shami kabab • grilled salmon (7oz) shrimp • one egg (scrambled/fried/poached) • house-made grits • barbari toast (with butter/preserves)

### DRINKS & DESSERTS

for full menu, visit us at [www.kittydare.com](http://www.kittydare.com)

1029 Edgewood Ave NE, Atlanta GA 30307 • 404-228-1566

# Freedom Park Update

By Sally Dorn, IPNA Rep to Freedom Park Conservancy • sdorn47@comcast.net

At the April IPNA meeting it was reported that an ordinance was going to be introduced at the City to adopt the most recent version of the Freedom Park Conservancy Master Plan as part of the Comprehensive Development Plan. Many people were concerned about this proposal because they felt the FPC had not fulfilled its obligations to amend the Master Plan based on concerns raised by the affected neighborhoods, including IPNA, and bring the final version back to the neighborhoods and NPUs for final review and comment. IPNA voted to have President Cristy Lenz write a letter and request FPC President Beth McDonald or her representative come to the meeting to discuss the final draft and afford IPNA an opportunity for final review and comment.

Due to the concerns raised by IPNA, the City has tabled the resolution. A committee from IPNA is preparing the final comments and requests IPNA has regarding this most recent last draft of the Master Plan. We now understand that several comments IPNA made in the past were interpreted merely as statements of opinions and that we needed to more clearly indicate we wanted actual amendments to the Master Plan to clarify the issues. IPNA is asking FPC President Beth McDonald to request similar final feedback from all affected neighborhoods by a certain date in July. Once the final feedback has been provided and reviewed and adequately dealt with by FPC, we believe then the Final draft of the Master Plan will be ready to be reviewed and voted on by the affected NPUs.

One of the concerns IPNA and other neighborhoods have raised is that the Master Plan did not set out a plan for a maintenance program. We worry about the failure to adequately maintain the Park grounds. Inman Park residents were also concerned that they didn't feel the Master Plan was explicit enough about the fact that it is an



overall big picture planning document and that actual projects undertaken will need to be studied and reviewed by the affected neighborhoods.

On another FPC note, we have previously requested the installation of signage regarding the requirement that dogs need to be on a leash in the park I have been told the signs are ready and that a city employee has been charged with installing the signs in the Inman Park leg of Freedom Park. We hope this will happen soon.

## muse

skin health | aesthetics

*We believe in a **delicate, minimalist approach** to anti-aging. Grounded in natural intention, we focus on guiding you in refining your skin and appearance to help you feel like the best version of yourself.*

### *Our Services:*

*Customized skincare  
Injectables  
Hydrafacial  
Chemical peels  
Microneedling*

*Please contact us for more information  
or to make an appointment*

*[museatl.com](http://museatl.com) • 404.254.4642*

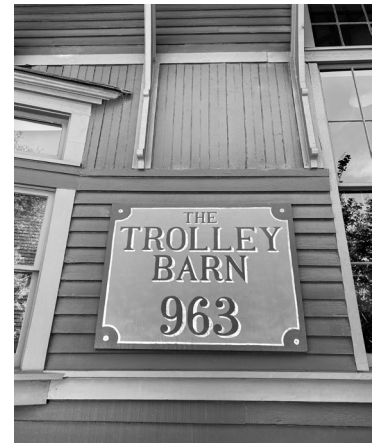


## Trolley Barn is Hiring!

The Trolley Barn is hiring for the newest Executive Director. This part-time position (25 hours per week) will be responsible for daily operations, events management, and board member facilitation. In addition, the executive director will be highly engaged with implementing the Trolley Barn's strategic vision to increase revenue through expanded offerings, increasing occupancy, and supporting the community.

The ideal candidate has three to four years of experience working in events and venue management with a bachelor's degree.

The restored Atlanta Trolley Barn, a historic venue, is Atlanta's premier intown host of mid-sized educational, community, and social events. The email to apply is [jobs@thetrolleybarn.com](mailto:jobs@thetrolleybarn.com), and applicants should send resumes and salary requirements.



## Inman Park Fourth of July Party!

Little 5 Points Center for Arts and Community will host the Fourth of July Party Monday July 4  
4 - 6 pm.

Everyone should bring a dish to share and whatever they'd like to drink.

Children are very welcome, there is plenty of space to play.

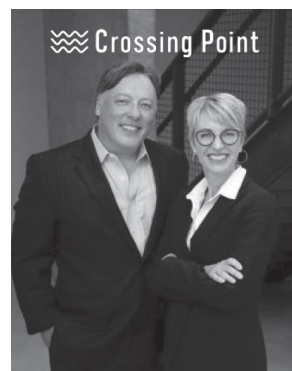
Air conditioned cafe space available, tent outside, and shade plus unshaded play area outside also available.




TEAM 360°  
ATL

**Ward Bradshaw**  
Realtor®

m. 404.402.3324 o. 404.668.6621  
[ward.bradshaw@compass.com](mailto:ward.bradshaw@compass.com)  
[team360atl.com](http://team360atl.com)  
1409 Peachtree Street NE, Atlanta, GA 30309



 **Crossing Point**

Guiding Executives Through  
**STRATEGIC CHANGES**

Strategy Alignment  
People Mobilization  
Results Delivery

Fergal Kearns & Janice Darling

 [info@crossing-point.com](mailto:info@crossing-point.com)  
 [www.crossing-point.com](http://www.crossing-point.com)

# Springvale Park Update: Calendulaceum or Flammeum?

By Beau Weidman • g.weidman@comcast.net



The volunteers in the photo are on a lily counting mission with Chattahoochee River Conservancy in Columbus. What does that have to do with Springvale Park? Participation with CRC and the Steve Johnson Conservancy of West Point gives me a portion of the propagation effort for another planting location. And that is SVP, we get more lilies.

The calendulaceum and flammeum are two of the most visible azalea species native to Georgia. During an earlier period, some UGA botanists advocated the group include a similar

third species. After DNA, it was determined to be a natural hybrid. At the extreme south end of the Appalachians and the north Piedmont they can interbreed much like the work of current nursery operators in today's environment of patented plants.

There are hundreds if not over a thousand hybrids sold today to choose from. It is for technical experts to identify one or the other because of their strong similarities. The important aspect for parks and gardens is Festival bloomtime. Like the dogwood, a pure calendulaceum will drop its last flower before Festival. There is more diversity within species than between the two and the effect of sun/shade means this is only an approximation. They both bud in shapes like a flame on a match. They both contain varying amounts of red, orange and yellow. Sometimes the group is sold generically as flame azaleas.

The redder in color is flammeum. One strain is associated with Brave Snake Harjoe, a Native American rights activist of the early 1900s. Although born in Oklahoma, his family had been removed from the Athens to Macon area. The blotch is a purer yellow and it is found on the Piedmont. It can remain blooming well into May. The blotch is streaked with red and orange, also the flower color, on calendulaceum. Its range is the Appalachian counties. The best chance for Festival bloom is flammeum, perhaps Harjoe, or 'Solar Glow', even 'Mooshatanio', its hybrids. Whatever the individual shrub, any one of the flame azaleas will yield beauty.

## whitespace

whitespace gallery is a contemporary art gallery located in Inman Park that is active in Atlanta and across the southeast. whitespace seeks to foster an immersive environment of free expression, intimacy, and dialogue. As a respected institution in Atlanta's art community, whitespace and the artists it houses continue to inspire all who attend through thoughtful examinations of the world around us.

Thursday - Saturday, 11am to 5pm  
or by appointment

814 Edgewood Avenue, Atlanta, GA 30307

[www.whitespace814.com](http://www.whitespace814.com)

404.688.1892

**TONY CONWAY**

**OPEN FOR BUSINESS:  
INMAN PARK HANDYMAN!**

Household repair, carpentry, light electrical and plumbing, room painting, deck repair, furniture assembly, washer/dryer install, furniture repair, fence mending, tub caulking and most of the things on your to-do list.

If you want to keep it simple & local, I'm your guy. Text me at 404.433.4187 and we'll knock out your list in no time!

30-YEAR RESIDENT  
OF THE INMAN PARK/CANDLER PARK AREA



# MAKE YOUR EVERY DAY EXTRAORDINARY

Sustainably produced  
wine, sourced mindfully  
from all over the world,  
right to your  
neighborhood shop.

---

Natural Excellence  
with  
Savi Provisions

PURVEYORS OF ORGANIC FOODS,  
FINE WINE AND SPIRITS

saviprovisions.com  
287 Elizabeth St NE, Atlanta, GA 30307

# IPNA Meeting Minutes: May 18, 2022

President Cristy Lenz called IPNA to order at 7:32pm. There were 37 participants.

Last month was Festival – so many great events. Videos were made, will be shared with IPNA.

## Welcome/Introduction of newcomers

- Joann Duffy – city planning for artist, here as observer
- Desirae Dominico - not newcomer, but haven't been in awhile

## Police officers' report

- Excitement on Waddell – State Police stopped individual for traffic violation, they started running. State police, APD, Lieutenant Bandi one of our patrol officer who was off-duty were all involved. Individual got away, still on loose. Individual may have multiple warrants out for his/her arrest.

- Plug for camera initiative – Connectatlanta.org. please register if you have a camera.

## Minutes of last meeting

- Correction from Pat Westrick: 894 Edgewood Ave topic from April 2022 meeting, the architect's name was misspelled. Should be Randy Pimsler. Meeting minutes were approved with this edit.

## Announcements

- New business in neighborhood -Throw Inc. Joy Huffman introduced new throwing facility across from Pure Taqueria. Axes, stars, knives, hatchets. Another business in Sweet Auburn area. Excited to be involved in community. Official Grand Opening of Throw Inc. | 325 Elizabeth St | This Friday, May 20 - 5:30PM - 10PM | Light bites and beverages provided | You can just show up or RSVP at <https://throw-inc.com/rsvp>

- Pat Westrick – Porch party on Friday, May 27, 7:30pm, 166 Elizabeth St. Alison and Jeff Gordon. Bring dish to share and a drink. All are welcome and special invite for kids to join too!

- Jan Keith – need the names and information of your graduates, high school, technical school, college. Name, street, what was their major (if college graduate), what they are doing next. Want to show we are proud of our IP graduates.

## Elected officials' reports

- Amir not able to be on the call but is working on the four-way stop at North Highland, by Delbar, Parish (Inman Village Parkway). Crosswalk was supposed to be a lot bigger, currently only 4 stop signs. Project has been rebid as singular items, not a whole project. Hawk signal is currently up for bid.

## IPNA officers' reports

### President

- Initiation of Officers -Nominating Committee announces candidates for VP of Planning and VP of Zoning. Regina Zoning, Pat is planning – both rolling off this May.
- Both nominee introductions below. Move that we approve the slate - 24 yes, 10 abstain

1) Todd Jackson - VP of Zoning. I moved to Atlanta in 1995 to join a restaurant holding company where I worked in construction and real estate for 20 years throughout most

the United States. My functional role started out remodeling and building new restaurant and later moved into the role of exclusively pursuing new real estate locations, negotiating lease renewals, negotiating department of transportation eminent domain and right of way taking, and dispositions of closed restaurants. I changed jobs in 2015, joining a smaller restaurant holding company, where we have now grown to 500 restaurants in 12 states.

After living in Sandy Springs for 14 years, my partner and I moved to Inman Park in 2019 to one of our rentals and quickly discovered the historic charm and friendly welcoming neighbors in the community. We have thoroughly enjoyed our time in Inman Park and recently were chatting about becoming more involved when it was announced at the most recent IPNA meeting a Zoning position was opening up on the Board. With my real estate knowledge, I felt it would be a fun and additional way to be involved with the community and continue to meet more of the IPNA family.

Lastly, you may have noticed us over the past 2 ½ years out walking in the neighborhood with our (2) 2-year old Golden Doodles. Besides my daughters, we now have the 2 pups.

2) Matt Cherry - VP of Planning. Matt lives on Virgil Street with his wife Anna and son Max. He is a Director of Landscape Architecture & Urban Design at Lord Aeck Sargent, an Atlanta-based architecture, planning and historic preservation firm. Throughout his 20 year career Matt has led dozens of Atlanta-based neighborhood planning and design efforts. Recent projects include the Midtown Garden District Master Plan, Hulsey Yard Neighborhood Master Plan, Little Five Mobility Study, Pullman Yard and Howard Middle School. Matt is an avid gardener and likes to trade plants with neighbors!

- Vote on Art design/Art on the Sidewalk Bike Racks
- Discussion on designs. Use the trademarked butterfly may create a negative precedent. Voting included a proposed change to option 2, with trademark butterfly replaced with simple butterfly design.

☐ Option 1 14 votes – this one approved. Will be in touch for next steps.

☐ Option 2 6 votes

☐ Option 3 9 votes

- Beltline Rail Now – (Motion for IPNA to sign the petition and send a letter of urgency from IPNA letter. 19-0 voted in favor)

- Beverly Miller and Eric Goldberg on board to expedite getting light rail on the beltline. Now is the time, engagement is happening across multiple neighborhoods. Proposal for IPNA to: 1) sign petition and 2) write letter of support. Funding is only available for a little time, plan is to sustainably connect the city and connect many neighborhoods. We agreed in 2016 to a new tax to be put toward this effort, and \$355M has resulted, but no action on the project. Would like to reach out to city officials for action. Connect existing streetcar to Ponce City Market. Pete Buttigieg – came to Atlanta in January and said this was just the kind of project they would be happy to fund. Encouraged individuals to send letters.

- Q: Are the materials cost effective?
- A: Several rail projects underway across the US. \$135M enough to build the rail. \$200M to lay rail and add stations. Comparable, median cost compared with other city projects
- Eric shared that the Beltline delivered on 2 of 3 promises – recreation/path, linear parks, connections between parks. Rail hasn't been delivered. This project will connect 45 neighborhoods. Rail can do this, and transit helps spur affordable housing across the city.
- Wisteria Building Zoning Update to make outdoor dining area permanent – will be voted on next month.
- Historic Preservation –
  - o Villa de Grip Design – committees working on this and Waverly way. In Design phase.
  - o Q: I would like to know what the status is of Villa de Grip. What are the designs?
  - o A: Designs proposed, discussed with Zoning and Historic Preservation, immediate neighbors meeting on Monday to review. Don't expect final design on Monday, may have some more review.
  - o Ro Lawson – emphasized the importance of Historic Preservation in Inman Park. Inman Park Mews HOA decided to remove the brick and replace with hardy plank. Importance of bringing to the neighborhood. Original plans required brick.
  - o Sandy – Will look into UDC process, follow up with Ro, and if they are doing something that would violate the original neighborhood commitment, could issue stop work order. Edgewood and Krog development – when they tore down the small building, were able to intervene and make some improvements in the design.
  - o Q: Do we need to bring plans to repaint condos to the IPNA?
  - o A: No, we do not regulate paint colors.
  - o Atlanta residents are encouraged to report illegal construction work or activity and property violations by contacting the Department of City Planning at emailing CodeBustersDCP@atlantaga.gov and copying historicpreservation@atlantaga.gov and Matt Adams, Interim Director of the AUDC.
  - o Jonathan: maybe it is a good time for Historic Preservation to go back to educating everyone, publicity campaign. We have a lot of expertise, and can help make a lot of projects better.
  - o Q: Regarding Villa de Gripe – Midge and Beverly requests for more visibility on designs. Request plans to be shared, since more than immediate neighbors impacted. There was a committee for this about 6 years ago. Uncomfortable with process because we haven't seen any design yet. Part of the process is to keep people informed, incremental info important.
  - o A: We could open for more public comment. There are no plans to share right now. Perhaps IPNA can send notice of Monday's meeting to through email to neighborhood. Anyone can attend on Monday's meeting. 7 pm at the Trolley Barn. First brainstorming meeting was a week ago, everyone welcome. Early plans conceptual, parking garage, couple buildings. Preliminary meeting, not immediate neighbors for a vote. These efforts are not currently within the normal process, because no application has been submitted yet. Initial brainstorming phase underway. All are welcome to join Monday's meeting. We are not at a point where we would be voting on designs yet.
  - o Cristy will send background materials to

neighborhood.

- o Pat - This is where our new website could really help improve broader transparency and inclusion. We could post most all updates there for people who cannot go to meetings and do so incrementally in real time asynchronously between meetings.
- o Jan Keith: We've talked for a LONG time about putting simple Q&As about Historic Preservation in our neighborhood directory.
- o Ian: The Atlanta Preservation Center will be leading efforts for city-wide and neighborhood preservation education tools for residents living in a local historic district. We are going to coordinate this effort with the City of Atlanta Urban Design Commission and the Planning Department, so more to come!
- o Emily: When the toolkit it build we can share in the IPNA newsletter and on the webpage. If you have any more information we can touch base at communications@inmanpark.org
- Zoning – No report.
- Planning
  - o Pat's last report as VP of Planning.
  - o Hulsey Yards Update. Had been trying to talk to Mayor Dickens, neighbors have said sound is better with CSX back in service. The cargo containers are stacked and serve as a sound barrier.
  - o It will be important to resume this conversation if and when CSX changes operations from cargo storage (now) back to transflow operations (loud noise).
- Treasurer
- Communications
  - o There's a lot of information going in the next newsletter – please look out for it!
- Public Safety
- Secretary
- NPU Report
- Committee Reports
  - Transportation
  - Education
  - Filming
- Old business/New business
  - Congratulations to the neighborhood – this morning Cristy accepted a Proclamation to recognize Inman Park Festival at Fulton County Commission meeting. Yesterday Kyla accepted a design award from Atlanta Dept of Planning for Inman Park Festival. GA Senate recognized Inman Park Festival. City of Atlanta recognized us in proclamation. Really incredible testament to the neighborhood.
  - Failed attempt to showcase Inman Park festival video – will showcase next month or upload to website.
  - Next month's meeting is in-person!

Adjourn – 8:46 – motion to adjourn was unanimously supported.

## Sign Up For Our Monthly Newsletter Updates Today!

Your trusted source for local market conditions, real estate news, events and so much more. Scan the QR Code below to sign up for our monthly newsletter updates.



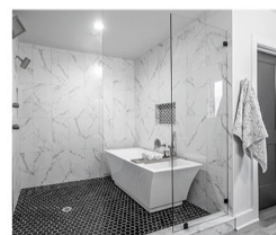
Jeff Raw

404.786.6635  
jeffraw474@gmail.com  
www.rawrealestategroup.com



## RAW REAL ESTATE GROUP

BUY/SELL/RENOVATE/BUILD/INVEST



**INTOWN DENTAL CENTER**  
QUALITY CARE YOUR FAMILY CAN TRUST

ALL MAJOR  
PPO INSURANCES  
ACCEPTED

**Celebrating 10 years in business  
@Edgewood Retail Center**



LOCATED ABOVE  
**GameStop**



We are a family-owned practice offering comprehensive general and cosmetic dentistry. We are insurance friendly and are currently accepting new patients.

- Janet Kearns DDS, FAGD

MAKE  
APPOINTMENT  
**404 889 8370**  
Seeing patients ages 3+ [www.intowndentist.com](http://www.intowndentist.com)



## LEIGH HAYS REALTOR®

SELLING INMAN PORCHES SINCE 1996

### BUYING

EXPERIENCED WITH  
NEGOTIATION IN THE  
CURRENT MARKET

+

### SELLING

STRATEGIC MARKETING  
PLAN BACKED WITH  
PROFESSIONAL MARKETING

CONTACT ME FOR ALL OF YOUR REAL ESTATE NEEDS  
[leighhays.atlantafinehomes.com](http://leighhays.atlantafinehomes.com)



### LEIGH HAYS

c. 404.402.4554  
o. 404.874.0300  
[leighhays@atlantafinehomes.com](mailto:leighhays@atlantafinehomes.com)

Atlanta Fine  
Homes

**Sotheby's**  
INTERNATIONAL REALTY

1555 Peachtree Street NE, Suite 100 | Atlanta, Georgia 30309

Atlanta Fine Homes, LLC fully supports the principles of the Fair Housing Act and the Equal Opportunity Act.  
Each franchise is independently owned and operated.

# Agenda

**June 15, 2022**

**IPNA Meeting • 7:30 p.m.**

**Location: Trolley Barn & Zoom**

I. Welcome & Introduction of Newcomers

II. Police Officers' Reports

III. Minutes of Last Meeting

IV. Announcements

V. Elected Officials' Reports

VI. IPNA Officers' Reports

A. President

B. Planning

C. Zoning

D. Historic Preservation

E. Public Safety

F. Communications

G. Treasurer

H. Secretary

VII. Committee Reports

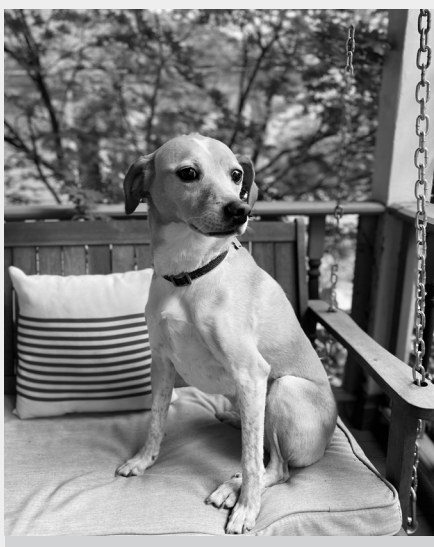
VIII. Old Business

IX. New Business

X. Adjourn

***Check [inmanpark.org](http://inmanpark.org) the day of the meeting  
for any agenda updates***

## **Doggo the Month: Ladybird**



A beautiful long legged angel pup with a squirrel vendetta.



## **Good to Know**

### **Inman Park Neighborhood Association (IPNA) membership:**

Inman Park Neighborhood Association (IPNA) membership: Available to those who live within or own property within the boundaries of Inman Park. Membership is \$5 with online registration at [inmanpark.org](http://inmanpark.org). Membership allows you to vote (see bylaws online for details), gives you access to the directory and makes you eligible for special neighborhood events. In addition to being a member of IPNA, you may register for the Inman Park Security Patrol (IPSP) which staffs off-duty Atlanta Police officers to patrol our neighborhood. There are four levels of commitment beginning at \$50 per year. IPNA meetings are held at 7:30 p.m. on the 3rd Wednesday of each month at the Trolley Barn. IPSP membership is based upon a rolling annual membership term. Your renewal date is one year from your membership date and again every year after that.

### **Advocator**

Send submissions to [advocator@inmanpark.org](mailto:advocator@inmanpark.org) before the 20th of the month for publication in next month's issue.

### **Websites**

[InmanPark.org](http://InmanPark.org)

[InmanParkFestival.org](http://InmanParkFestival.org)

[Facebook.com/InmanPark](https://Facebook.com/InmanPark)

Instagram: [@inmanpark](https://www.instagram.com/inmanpark)

### **Report All Crimes: Call 911**

IP Security Patrol: 404-414-7802

L5P Mini-Precinct: 404-658-6782

### **L5P Business Association**

[www.little5points.com](http://www.little5points.com)



LOVE LETTERING

Custom Hand-Lettering  
"Legacy Art"  
Custom Quotes  
Calligraphy

by local Inman Park Artist,  
Colleen Finn

*Inquiries, please contact  
colleen@colleenfinn.com*



**Protect our Pollinators**  
while also helping to protect your  
family from dangerous, disease-  
carrying mosquitoes.



### With **BUG BUSTERS**, you can do both.

Our proven mosquito service will help you protect your family from mosquito-borne pathogens like the **West Nile virus** and **Zika**, without harming your yard's natural population of pollinators like bees.

Our Pest Management Professionals are trained to treat areas where mosquitoes rest, while avoiding areas frequented by stinging insects.

**We Are... Who Ya Gonna Call.**  
**(770) 517-0200 • BugBustersUSA.com**



**BUG BUSTERS**  
Pest • Termite • Mosquito • Wildlife • [www.BugBustersUSA.com](http://www.BugBustersUSA.com)

**DRE Smokes MEATS**

**BBQ CATERING**

Family Owned  
Locally Sourced  
Southern Cooking

- GRADUATION
- BIRTHDAY
- HOLIDAYS
- SHABBAT DINNER
- ANY EVENT!

*"Sauce? Who needs sauce?!"*

Call Us! 770.203.8059 Follow Us on IG! @DreSmokesMeats  
\*Mention this ad for 10% off \$150+