

THE Inman Park Advocator



Atlanta's Small Town Downtown News • Newsletter of Inman Park Neighborhood Association

advocator@inmanpark.org • inmanpark.org • 245 North Highland Avenue NE • Suite 230-401 • Atlanta 30307

December 2021

Volume 49 • Issue 12

President's Message

Holiday Happenings in Inman Park

By Amy Higgins • President@inmanpark.org

Enjoy the charm of a European-style Christmas Market at the Trolley Barn. Karen Mebius and her committee have created a special holiday event with food, drink, and local goods for sale. The market takes place on the first three Sunday in December and runs from noon to 8:00pm. The event will include 30+ local vendors selling gifts, arts, crafts, food and beverages.

I understand Santa may be making a visit to the market as well. Come out and support our local businesses! Please visit <https://www.eventeny.com/events/inmanparkchristmasmarket-1914/?series=513> for more information.

The IPNA Holiday Party returns to the Trolley Barn on Tuesday December 21st. We are getting back to our roots this year and hosting a pot-luck. Admission is free but please bring a dish to share. Wine will be provided courtesy of the Inman Park Wine Stroll Committee. Please be sure to RSVP to President@InmanPark.org by December 20th so we know how many folks to expect. We'll be providing more details at the December IPNA meeting and on the IPNA website as we get closer to the date.

Next door in the Old Fourth Ward, Dad's Garage Theater will be presenting their wacky take on the holiday classic "A Christmas Carol," titled "Invasion: Christmas Carol." It promises to be full of surprises and the off-beat humor that makes Dad's a beloved local institution.

Looking for a way to give back to your community this season? Consider volunteering for the Neighbor-to-Neighbor program run by our Lifelong Inman Park Committee. Neighbor-to-Neighbor pairs volunteers with fellow Inman Parkers who are in need of help getting to doctor's appointments, running errands, etc. Please reach out to Cathie Berger, Linda Gross and Jackie Lawrence at Lifelong@InmanPark.org to find out more about how you can help.

Cheers and best wishes for a happy 2022!



(photo by Jennifer Cohen)

2022 IP Book
Club Wants
You

Page 6

Take the Polar
Bear Plunge!

Page 9

Make a List
Check it
Twice

Page 11

Advertise in the Advocate!

ads@inmanpark.org

RE/MAX
METRO
atlanta | cityside

Celebrating 36 Years
of bringing Inman Park home.



**THE PAT &
MELISSA
GROUP**

Welcome to INMAN PARK

**Your
Neighborhood
Specialists**

For your Real Estate needs,
Please Call Us or visit online
404-371-4419 (Re/Max Cityside)
404-276-7736 (Melissa)

www.patandmelissagroup.com

photo credit under creative commons license: <https://creativecommons.org/licenses/by/2.0/>
https://commons.wikimedia.org/wiki/Commons:GNU_Free_Documentation_License



ESCAPE HOLIDAY DISTRACTIONS &
VISITORS. ENJOY THE SEASON BY-

**COWORKING
ON THE
BELTLINE**

ALKALOID.NET • 404.475.4850



ALKALOID
NETWORKS



**INTOWN
DENTAL CENTER**
QUALITY CARE YOUR FAMILY CAN TRUST

ALL MAJOR
PPO INSURANCES
ACCEPTED

**Celebrating 10 years in business
@Edgewood Retail Center**



LOCATED ABOVE
GameStop



We are a family-owned practice
offering comprehensive general
and cosmetic dentistry. We are
insurance friendly and are currently
accepting new patients.

- Janet Kearns DDS, FAGD

MAKE
APPOINTMENT

📞 **404 889 8370**

🌐 www.intowndentist.com

Seeing patients ages 3+

RELAX. REJUVENATE. RESTORE

UTOPIA
FOOT & SHOULDER
MASSAGE

**FOOT & SHOULDER MESSAGES
STARTING AT \$33!**
SEE OUR MONDAY AND WEDNESDAY SPECIALS



2020 Best of Atlanta Magazine Winner
2020 Best of Best Self Magazine Winner

GRANT PARK
465 BOULEVARD SE
404-228-4183
WWW.UTOPIAATLANTA.COM



Inman Park Neighborhood Association

Officers

President, Amy Higgins
president@inmanpark.org

VP • Planning, Patrick Pontius
planning@inmanpark.org

VP • Zoning, Regina Brewer
zoning@inmanpark.org

VP • Historic Preservation, Sandy Hoke
historic.preservation@inmanpark.org

VP • Public Safety, Tom Baldwin
public.safety@inmanpark.org

VP • Communications, Melissa Lawrence
communications@inmanpark.org

Treasurer, Phil Disher
treasurer@inmanpark.org

Secretary, Alex Ganim
secretary@inmanpark.org

Advocator

Editrix
Carla Jeffries

Staff
Marge Hays, Beverly Miller, Glenda Minkin, Julie Noble &
Pat Westrick

Submissions
advocator@inmanpark.org

Printed by Darcel Stewart, The UPS Store

Chairs & Coordinators

Archives

Teresa Burk • tburkus@gmail.com • 404-449-3000

Beautification

Barbara Leach • leachbarbara@bellsouth.net • 404-521-2672

Sidewalks

Millie Astin • sidewalks@inmanpark.org • 404-293-9012

Education

Eric Goldberg • education@inmanpark.org • 678-467-2096

Festival 2022

Sam Bailey • sambailey211@gmail.com

Jane Bradshaw Burnette • jcb5858@yahoo.com

Freedom Park Conservancy

Philip Covin • covin8@yahoo.com

Graffiti

Nelson Ray • NelsonRayATL@gmail.com • 404-561-6101

Hospitality

Patsy Fisher • hospitality@inmanpark.org • 404-550-0790

Inman Park Tree Watch and Arboretum

Jim Abbot • abbot.jim@gmail.com • 404-281-0638

Lifelong Inman Park

Cathie Berger • lifelong@inmanpark.org • 678-429-5221

NPU-N Representative

Neil Kinkopf • npu.n@inmanpark.org • 404-281-0638

Social

July Fourth: Carol Mitchell • carol@the-mitchells.org •
404-659-2579

Holiday Party: Cristy Lenz • 404-822-3884

Porch Parties: Pat & Richard Westrick • patwestrick@realtor.com
• 404-388-6466

Special Events

Karen Goeckel • kgoeckel@me.com • 678-612-1776

Springvale Park

Beau Weidman • g.weidman@comcast.net • 770-715-3403

Amy Higgins (Master Plan) • ahigginsaia@gmail.com • 404-593-8253

Transportation

Janice Darling • transportation@inmanpark.org • 678-488-1925

2021 Inman Park Book Club

Meets at 7:00 pm on the last Tuesday of most months.

Most book selections are available at our neighborhood bookstore:

A Cappella Books

208 Haralson Ave, Inman Park
10% Discount! Shop local!

Dec 12

Melodie & Peter Rogers,
883 Edgewood Ave.,
Holiday Brunch and Book
Exchange

Bonus Books!

**"His Very Best: Jimmy
Carter, a Life"**
by Jonathan Alter

**"The Evening and the
Morning"**
by Ken Follett

Find 2022 Book Club
info on page 6!

Get your IPNA vinyl
banners, cloth masks
and Historic Inman Park
(HIP) stickers for sale at
Intown Business Center



VISIT VARUNI NAPOLI AT KROG STREET MARKET

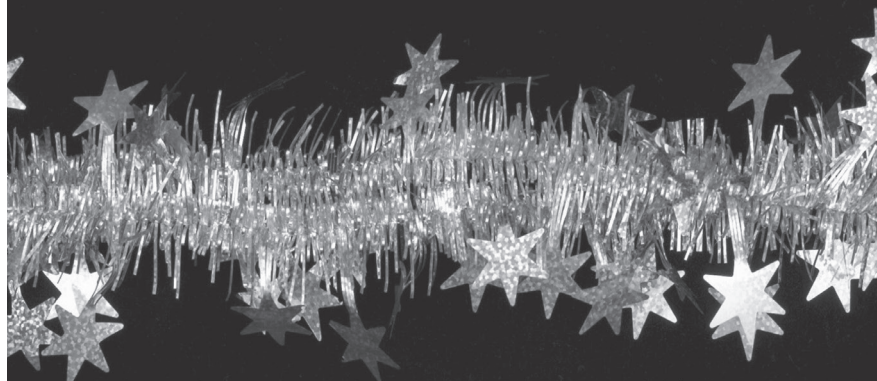
**JUST OFF THE BELTLINE
TAKEOUT + DELIVERY AVAILABLE**

99 KROG STREET NE
WWW.VARUNI.US



EVERYONE:

Get Ready for the FIRST OUTDOOR
"INMAN PARK CHRISTMAS MARKET"
AT THE TROLLEY BARN !!!



NO LESS THAN THREE SUNDAYS:

DECEMBER 5, 12 and 19, 2021

FROM 12-noon until 8:00 PM

There will be Gifts! Food! Drinks! Kid's Activities and
More!

For info/volunteering/sponsoring please go to:

<https://www.eventeny.com/events/inmanparkchristmasmarket-1914/>

or go to: www.inmanpark.org and click on the link there,

or go to: www.eventeny.com

and search for: Inman Park Christmas Market

or email: 2021ChristmasMarket@gmail.com

Neighbor to Neighbor

Inman Park neighbor volunteers are ready to assist anyone needing short-term help. For example:

- Getting to medical appointments
- Preparing meals or help with pets while recovering from illness
- Managing daily activities

Visit www.inmanpark.org/lifelonginmanpark
Contact Linda Gross (404-545-5222) or Jackie
Lawrence (404-272-0024)

IPNA Calendar

Dec 12

Book Club Party

See page 4
for details

Dec 15

IPNA Meeting

Zoom
7:30 p.m.

Dec 21

IPNA Holiday Party

See page 7
for details

Jan 19

IPNA Meeting

Zoom
7:30 p.m.

Jan 25

Book Club

See page 4
for details

Jan 27

NPU-N Meeting

LSP Community Center
7:00 p.m.



Inman Park Residents:

Want to keep up with local events, civic activism, and neighborhood content related to Inman Park? Join our Inman Park Google Group with almost 1000 subscribers. Email admin Patty Durand at pdurand@bellsouth.net to join.

2022 Inman Park Book Club Selections

2022 Inman Park Book Club

Meets @ 7:00 pm on the last Tuesday of most months.

Most book selections are available at our neighborhood bookstore, A Capella Books, 208 Haralson Ave, in Inman Park. 10% discount! Shop local!

- January 25 Paula Mason, 1046 Washita Ave., "The Riviera House" by Natasha Lester
- February 22 Stephanie Sherman, 936 Austin Ave., "The Rose Code" by Kate Quinn
- March 29 Santosh Nayak, 228 Montag Circle, "The Extraordinary Life of Sam Hill" by Robert Dugoni
- April 26 Patty McGuigan Robinson, 814 Virgil St., "Hidden Valley Road" by Robert Kolker
- May 31 Melodie & Peter Rogers, 883 Edgewood Ave., "Harlem Shuffle" by Colson Whitehead
- June 28 Linda Dunham, 12 1st Ave. (Kirkwood), "The Correspondents" by Judith Mackrell
- July 26 July 26, Diana Glad, 960 Edgewood Ave., "The Masterpiece" by Fiona Davis
- August 30 Fiona Havers, 102 Druid Circle, "The Last Green Valley" by Mark Sullivan
- September 27 Susan Levy, 627 Irwin St., Unit 3 (Old Fourth Ward), "Apples Never Fall" by Liane Moriarty
- October 25 Cathy Jamison, 805B Edgewood Ave., "Damnation Spring" by Ash Davidson
- November 29 Jan Keith, 889 Edgewood Ave., "In Every Mirror She's Black" by Lola Akinmade Akerstrom
- December 11 John Floyd, 116 Elizabeth St., 1:00 Sunday, Holiday Brunch and Book Exchange

Bonus Reads: The Silent Patient, Grandma Gatewood's Walk, The Lincoln Highway, Ms. Benson's Beetle, The Day the World Came to Town, and The Yellow Wife

Springvale Park Update: Planted

By Beau Weidman • g.weidman@comcast.net

The plantings for this year are now over until the spring. Shrub additions include calycanthus and illicium, alongside the azaleas, rhododendron and mountain laurel. About 30 new shrubs were installed bringing to 100 the total from recent years. Bulbs for shoals lilies were planted along Springvale Creek and will add to the grace of the small number previously installed. The last period when an effort of this magnitude was made occurred around 2005.

An infrastructure improvement for good drainage now yields a dry lawn. While our three previous methods for a large water system all no longer function, maybe another approach will take place next year.

Red berries on the green holly, yaupon, nandina and magnolia are thriving. What will be the next item to see along the forebay and discovery rocks of the creek?





Inman Park
NEIGHBORHOOD ASSOCIATION

Holiday Party Potluck

Join us for leftover wine stroll
vino, potluck fare and
neighborhood joviality! Bring a
potluck dish to share!

**Wine
Food
Music**



| | | |
|--|--|---|
| Tuesday 21 December | Trolley Barn 6:00 pm - 10:00 pm | |
| | Bring a dish to share! BYOB if you don't want wine. | Volunteers are needed for set-up and clean-up. Email admin@inmanpark.org to sign- up to help. |

SAVI

PROVISIONS

PURVEYORS OF ORGANIC FOODS,
FINE WINE AND SPIRITS

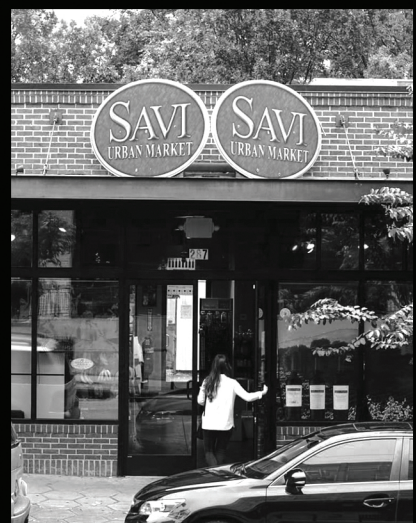


*Make Your
Every Day
Extraordinary*

10% OFF
6 Bottles of Wine

15% OFF
12 Bottles of Wine

Natural Excellence
with
Savi Provisions

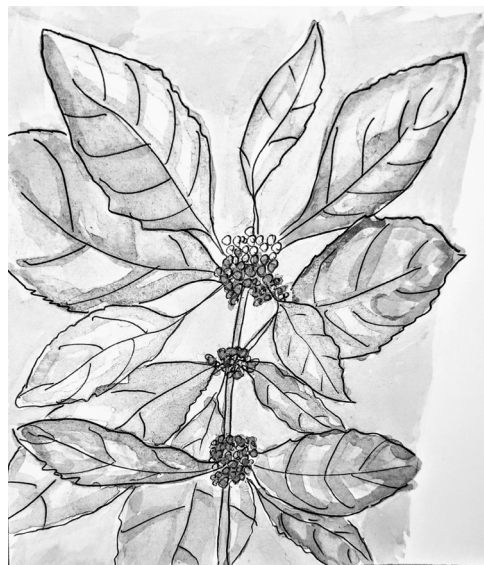


saviprovisions.com
287 Elizabeth St NE, Atlanta, GA 30307

Native Plants Show Up

By Lynn Curtis Koehnemann • lkoehnemann@gmail.com

As development replaces more and more of Georgia's wildlands, conservationists are looking at urban landscapes and their potential to provide valuable wildlife habitat. Greenspaces with native, perennial plants are important to both birds and insects. The



seeds of native plants provide a food source for birds, and the stems provide nesting materials. The plants also provide habitat for insects - a significant food source for birds.

The rapid spread of Rose rosette disease in Atlanta is causing both home gardeners and commercial landscapers to replace diseased roses - notably, the Knockout rose. The very familiar and colorful Knockout rose is seriously overplanted in commercial landscapes. If people replace these diseased non-native roses with native plants, this

will be a boon for wildlife. Native shrubs seem to be gaining the attention they deserve! (Rose rosette disease will appear as distorted growth, excess thorns, and reddish discoloration.)

The native plants mentioned here are favorites and bring fragrance, varied color, fruit, textural interest, and novelty to the garden:

1 Oakleaf Hydrangea / *Hydrangea quercifolia*
This hardy, large-leafed old favorite deserves a place. In spring, the white flower heads can be more than 10 inches long and will dry and last on the plant for months. The leaves turn maroon in fall, adding color and texture to the garden.

2 American Beautyberry / *Callicarpa americana*
The Beautyberry's delicate pink blooms in late summer are followed by a surprisingly robust display of magenta-purple berries. Loved by wildlife, American Beautyberry fruit is an important nutrient source for over forty songbirds, including robins, brown thrashers, and towhees. (USDA plant factsheet)

3 Pink Muhly Grass / *Muhlenbergia capillaris*
One of the most beautiful ornamental grasses, Pink Muhly Grass creates drama in the fall garden when other ornamentals are fading. And this beautiful late-season grass is surprisingly hardy. The clumping habit of Pink Muhly Grass provides nesting and cover for beneficial insects such as ladybug beetles and food for wild birds.

4 Yaupon Holly / *Ilex vomitoria*
Yaupon's small white blooms are fragrant in the spring. This small-leaved holly is dioecious; both male and female plants must be present for fruiting. Enjoy watching birds? Birds eat the red yaupon berries in the winter, nest there in the spring and use the shrub for shelter all year. The fruit is an important food for many birds, including Florida duck, American black duck, mourning dove, ruffed grouse, bobwhite quail, wild turkey, northern flicker, sapsuckers, cedar waxwing, eastern bluebird, American robin, gray catbird, northern mockingbird, and white-throated sparrow. (USDA)

5. Rabbiteye Blueberry / *Vaccinium virgatum*
This bush will have pretty bell-shaped blossoms in the spring, attractive, edible fruit through the summer, and brilliant red foliage in the fall. Native to Georgia, this bush gets its nickname from the pink-colored immature berries. Use more than one variety to allow for cross-pollination and extend the berry harvest. Also dioecious.

6. Winterberry / *Ilex verticillata*
These cadmium red berries are eye-catching in the winter garden. Winterberry is a deciduous holly with soft leaves and its blooms attract a variety of native bees. Winterberry is dioecious; generally, one male winterberry will be sufficient for pollinating up to 10 female plants. The female flowers produce the striking red berries - a lovely alternative to faux floral arrangements.

Polar Bear Porch Party!

Inman Park Pool's Polar Bear Plunge, the totally unofficial Winter Porch Party, will be held on January 1, 2022 at 11:00 AM. The tradition has been going strong for over 20 years now. Not even the Pandemic can stop this train.

Meet us at the pool slightly before 11:00 AM dressed in your warmest bathing attire. For those new to these streets, the pool is located at 25 Spruce Street (on the alley behind the Inman Walk townhomes on Edgewood Avenue). The Pool Board will provide a selection of liquid courage, coffee, and a complementary towel as long as supplies last.

Getting wet is never required, but it would be a shame to waste all that water.



...but I thought all Katz hate water! (rim shot, I'll see myself out)

How a 1975 Christmas Tour Continues to Shape the Sounds of Inman Park

By Molly Malone Cowles • molly.e.malone@gmail.com

When Bonnie Dees and her late husband, Jeff, moved into 897 Edgewood Avenue in 1972, they became two of the first Inman Park Urban Pioneers and quickly began making their mark on the neighborhood in ways we can see, and also hear, today.

Bonnie and Jeff had their home on the first Inman Park Festival Tour in 1972, featured as a “before house” to show the work that needed to be done to restore and save the homes of Inman Park. Bonnie recalls, “Of course no one in the city even knew where Inman Park was! We were not on any city map at the time.”

“The day after the first festival, I talked to Robert Griggs, our president, and suggested we make the festival a yearly event. We were all exhausted and he didn’t want to think about doing it over again,” said Bonnie. But Bonnie got Robert’s blessing to have another festival and volunteered to be chairperson for the second Inman Park Festival in 1973. It was at this time that it was decided that the festival would always be the last weekend in April. “The goal was that the day would come where other festivals had to plan around us, and now 50 years later, we still ‘own’ the last weekend in April,” said Bonnie.

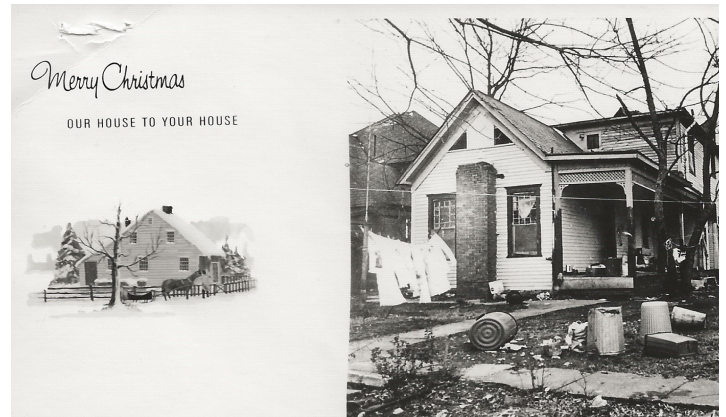
While Bonnie was instrumental in the creation of Inman Park Festival, her presence is also heard through Inman Park still. Actually, it is heard each hour through Inman Park.

A Christmas Tour of Homes in 1975 was created as a fundraiser to add the carillon (bell) at Inman Park Methodist Church in honor of Louise Rivers. Louise was instrumental in welcoming the “pioneer” families into Inman Park with her warm, caring nature. She invited new families into the church to meet each other, even if they were not members of the congregation. Louise also created a mother’s morning out program on Tuesdays, which Bonnie says was helpful for mothers to run errands, or what was maybe more typical in those days of Inman Park, “go back home and strip paint.”

Bonnie said, “Louise was truly a saint. We wanted to do something

to honor Louise for all she did for us Urban Pioneers, especially the moms. So what do Inman Parkers do to raise money? We have a house tour!” And that’s exactly what six Inman Park families did.

The Christmas Tour of Inman Park was held on December 13-14, 1975 and was covered with a full-page spread in the AJC. There were five houses on the tour, with Bonnie’s house being a Victorian Christmas theme. Other themes included a Contemporary Christmas at the Eaton home, located at 47 Delta, while the Hurt Cottage at 117 Elizabeth was an Elizabethan Christmas theme. The cost was \$3 per



ticket and also included a musical performance at the church.

While Bonnie does not recall the amount of money that was raised, the tour raised enough to purchase and install the carillon at the church. Louise, who had been diagnosed with terminal cancer, was able to come to the church and hear the bells purchased in her honor only a few weeks before she passed away.

“None of us were Methodist and none were members of that particular church, but we wanted to be sure that the church and the memory of Louise’s kindness was kept alive because it was an integral part of the neighborhood,” said Bonnie.

Mary Lin Foundation

Inman Park neighbors, please consider supporting your local elementary school, Mary Lin, by donating to the Mary Lin Education Foundation. Our Rocket Fuel Fund provides Mary Lin with the resources needed to navigate these challenging times, like air purifiers, virtual training(s) for teachers, and subscriptions to enrichment tools for our students. We arm teachers with resources the district does not cover to ensure every student, regardless of ability, has the opportunity to succeed.

We are nearing the end of our campaign and making great progress toward our goal of \$125,000. Those that make a minimum donation of \$150 will receive a yard sign delivered to their home to show their support.

Please help every Rocket reach for the stars by making a donation at marylinfoundation.org or use your camera to follow this link:



Are You a List-Maker or a List-Doer?

By Jan Keith • janetbkeith@gmail.com

Do you enjoy making to-do lists? Or honey-do lists? Who does the work? It's always interesting to see how lists are managed. For me, if it gets "on" a list, it gets done (no matter what!). So, here's my starter list for you for Fiftieth Festival (BTW, I'm quite good at making lists for others—just ask my fam):

- Have you purchased an IP flag and/or banner to fly during Festival? The IPV Business Center is stocked now—so don't delay. We're hoping everyone flies their flags during Festival (April 22-24, 2022).
- Have you blocked that weekend on your 2022 calendar—not just the actual Festival weekend, but a day or two to recuperate?
- Have you reached out to friends and neighbors to start planning for Butterfly Ball and Theatre Night?
- Have you contacted neighbors who have moved to remind them to come back for Fiftieth Festival?
- Have you read the fun, Fiftieth Festival articles in the Advocate? Lots of history and fun remembrances of just how far we've come.
- Have you thought about volunteering for a Festival job (house sitter/trash patrol/beer pourer/Caterpillar Ball volunteer/Butterfly Ball décor, set up and take down shifts? Lots of opportunities and you'll have a

fun time too.

- Have you realized that it takes about 900+ volunteers to staff Festival? Please do your part! Don't be a slug... transform yourself from cocoon to a full-fledged butterfly!
- Have you considered purchasing a limited-edition, signed and numbered, Festival poster? Stay tuned for details and be ready to secure your purchase.
- Have you heard that this is going to be the biggest, baddest Festival ever? Not only is it our Fiftieth, but we've had two Covid years which means there is a lot of pent-up demand for fun. More merch and other goodies.
- Have you gotten your butterfly gear/gowns out of mothballs? Butterflies reign during Festival.
- Have I forgotten anything? The countdown begins soon. Here's to the next 50 years!



Doggo the Month:

Gus



Teen wolf pounces when you least expect it.

Inman Park Parents!

Want to stay in the know about current APS (and other parenthood-based) news? Join the Inman Park Parent Google Group to hear the latest. Email junoble@yahoo.com to join.



IPNA Meeting Minutes: November 17, 2021

President Amy Higgins called IPNA to order at 7:33pm
Participation varied over the course of the meeting; peak attendance was 41 people.

Welcome/Introduction of newcomers:

- Alexander Araujo, Druid Cir – moved in 4 months ago

Police officers' report

- Crimes of opportunity are still an issue, be careful about what is in view in your car.
- Question: Sign for lane closures on Dekalb Ave – will there be police presence? Ofc Webb will make sure watch commanders are aware. More info provided during Transportation Committee update.

Minutes of last meeting (motion to approve minutes was passed without opposition)

Announcements:

- Robert Huber to present on Inman Park Cooperative Preschool: Planning to expand into a space that is currently a parking lot around their playground. New building would be 4000 sq ft, and be used as a young children facility primarily for 2.5-3.5 year olds. Hope to get it up and running within 3-5 school years. Wants to make sure neighborhood is fully supportive of plans, and they will be responsive to questions. Reach out to Robert Huber (ro.wil.hu@gmail.com), School president, Matt Kotheimer (mattkoty@yahoo.com), and/or IPCP strategic planning board chair Johann Weber (johannchristianweber@gmail.com).
 - o Question: How much cash to raise for financing? Answer: Currently looking at ways to start raising funds and getting estimates on how much the project will cost. Just kicking off, and parents fundraising committee will be communicating on this in the future.
 - o Question: What are your plans for the existing trees in the playground and parking lot? Answer: IPCP's Mission statement includes the importance of raising kids with connection to nature, and strives to provide hands-on, outside experiences. Looking to avoid impacting trees in the area. Of the linear parking lot, the building will mostly occupy the currently empty space. Small portion with low growth trees under the canopy may be lifted, but plan to replace any that are taken up in space. Epstein Group hired works based on sustainable design, and architecture is important to those leading the project to maintain the neighborhood fabric.
 - o Question: Do they anticipate any issues with logistics timing, or zoning questions? Answer: With zoning, there may be questions about parking. Would require 6 parking spaces within property line under current ordinance. Kadampa Meditation – is willing to integrate parking requirement in their lot. Max sq footage is 6000 sq ft., but IPCP is not planning on 2 stories. Explored using part of space for eatery but decided not to pursue mixed use. (Informed that variances could be requested for an special exception for offsite parking).
 - o Comment: Make sure Epstein Group is familiar with Inman Park historic ordinance.
- Inman Park Outdoor Christmas Market will be held December 5th, 12th, and 19th. Will include over 30 high quality vendors. Website: <https://www.eventeny.com/events/inmanparkchristmasmarket-1914/?series=513> includes info about the events, and ability to volunteer. Reach out to Karin with any questions or to get involved: karinmebius@gmail.com
- Kitty Dare restaurant at 1029 Edgewood Ave, is hosting open house for Inman Park residents from 5-10pm on Monday, November 22. Free wine and hors d'oeuvres while touring the space.

Elected officials' reports: N/A

- Nan Orrock reported on Redistricting session, Nov 3. Shared concern about the session being held very late, and potential impact on candidates running for office. Congressional districts may also be impacted, and this is on the ballot for 2022. Raised concern about the potential vote for Buckhead to secede from Atlanta. This will only be voted on by Buckhead residents but will have a negative impact across Atlanta, including with schools, public services, and shifting tax burden. Strong encouragement to reach out to personal acquaintances in Buckhead to discuss the upcoming vote and share concerns.

IPNA officers' reports

President

- IPNA representative to the L5PA – requesting someone to represent IPNA. There will be a vote next month on replacement.
 - o Chris Curley highlighted the good work of L5P alliance. \$3M earmarked for construction if TPLOST 2, directly impact IP in great ways. The representative role is a 2 year commitment, IPNA has 2 representatives, Chris is one and we need a volunteer for other role.
- IPNA 2021 Holiday Party will be held Wednesday December 22, from 6-10pm at the Trolley Barn. The party will be potluck style, with free wine leftover from the Wine Stroll event.
- Amy is stepping away from role for a couple months, will be back in February. Cristy Lenz will serve as acting President during this time.

VP of Historic Preservation

- 179 Battery: (20 support 1 abstain. Motion passes)
 - o Proposal reviewed by historic preservation – met with enthusiasm. Immediate neighbors (3), vote was 3 to support, no opposition. It's a contributing structure. Front porch is not original. New porch added 20 years ago. Redoing the porch to better match neighborhood style. Concrete slab to replace flooring, eaves. Adding screened in porch on second floor on camelback.

VP of Zoning

- 54/62 Waverly Way rezoning presentation and vote (24 support with conditions, 3 opposition, 2 abstain. Motion passes.)
 - o Cooper presented: New construction project to build townhomes on these two lots. Multiple zoning classifications across the two lots, would require a rezone to MR-4B (specific for multifamily townhomes). Have made adjustments to the design, broke up the massing of the buildings and includes driveways in middle and each end of property along Waverly. Retaining wall and fence will hide the first level in back of property. Pedestrian access to back of properties. Trash collection, no dumpster. Designated parking for units without parking on site on street. 11 units total, 6 facing Waverly. Garages on back with units. MR-4B zoning does not include setbacks, but architect took the historic overlay into account and using 14 ft. currently. Three stories, in keeping with historic ordinance.
 - o Request support is conditioned on no non-residential uses. Must be residential only, even though MR-4B allows for other usages.
 - o Request the project is sensitive to and accommodates for the root structure of a large oak tree on a neighboring property.
 - o This zoning would enlarge sub area 2 (SA2, zoning along Dekalb Ave), what does that mean for 50 Waverly? Will there be two zones within SA2? Specific zoning for multifamily, and SA2 because of the rezoning. Waverly is the only place where sub area 1 reaches Dekalb ave.
 - o Will we lose compatibility rules when SA1 switches to SA2? Can Cooper bring this up with the NPUN update for comprehensive development plan? Preface w context of street.
 - o What are SA1 and SA2? Historic zoning classification, underlying R5 and I2. Then sub-areas were established within

Inman Park. SA1 is residential heavy, SA2 is commercial along Dekalb Ave, and SA3 is along beltline. Historic retention of buildings was the goal of establishing SA1. This project rezones an R5-SA1 lot to R5-SA2.

- o At immediate neighbor meeting, 12 attended, and 7 were in favor, 5 were opposed.
- o Requests to delay vote until more clarity.
- o Motion made to support project with 1) both sub area designations to remain and 2) the MR-4B rezoning is conditioned as multifamily residential only. 24 support w conditions, 3 opposition, 2 abstain.
- Short Term rental amendment update – N/A
- Jonathan and Regina are participating in community engagement sessions to revamp Atlanta's zoning code (<https://atlzoning.com/meet-and-contribute/>) Will attend the 4th Idealab Meeting, held Dec 14th.

Treasurer

- Fiscal Year 2022 budget discussion and vote (17 support, 1 opposition, 1 abstain. Motion carries)
- o \$150k of reserves that have not been touched. Even without full festival we are resourceful with fundraising. The Wine Stroll brought in around \$36,000 to IPNA!
- o Phil provided overview of budget.
- o Question: Why no social events? Answer: Social events can be done another way, that's why zeroed out. Other expenses and contributions to community partners may be less flexible.
- o Question: Is LSP alliance zeroed? We decided to develop a more conservative budget until we understood what is possible for Inman Park Festival 2022. Would like organization and initiatives to resubmit requests for grants in January for consideration.
- o 40% of wine stroll proceeds were contributions for the Inman Park Patrol, the rest went to IPNA.
- o Question: How and if we will do hybrid meetings (with in-person and virtual options), and has there been a consideration for this in the budget? Answer: This is why we increased general board expenses and plan to build capacity for hybrid meetings. Owl under consideration, looking at new technologies.
- o \$60,000 is budgeted for festival, and something will planned.
- o Question: How much is it for printed IPNA directories to be

included? Standing request for 3 years. Answer: \$4-5k, others have also requested. We will reevaluate priorities in Jan.

Transportation Committee:

- John Boland, traffic design work. Moved to IP last year. Attended recent meeting on Dekalb Ave construction projects: <https://atldot.atlantaga.gov/projects/dekalb-ave-safety-improvements>.
- o Reversible lane coming down Dec 1, which will allow for land shifts to happen so no detours needed. Unofficial detours will shift people to alternate routes (waves and Google maps). Serious construction will happen early 2022. Work will also be underway on Krog tunnel, to address flooding and storm water runoff. Will be completed in conjunction with Dekalb Ave. work, so the disruption to that section will be minimized. For Krog tunnel work, there will be detours because they will need to close the tunnel. Krog St. will be closed from Edgewood to Dekalb Ave for all of Feb. Work at Euclid and Edgewood will be starting imminently. Public meeting tomorrow for PFLOST presenting projects. See ATLDOT website above for more details. Worth seeing the Moreland and Dekalb Ave intersection plan for bikes.
- o Question: Lives along Dekalb Ave and have had nuisance road vibrations since a gas line/utility work last year. Will this project help? Answer: Told by city there is no way to know if this will address the project until it's done. Will follow-up offline.

Security (N/A)

Communications (N/A)

Secretary (N/A)

NPU Report (N/A)

Committee Reports (N/A)

Old business/New business (N/A)

Meeting adjourn by Amy Higgins at 9:43 pm.

Trolley Barn Board Nominations

The Trolley Barn (Atlanta & Edgewood Street Railway Co.) is seeking nominations for those interested in serving on the Board of Directors. Those interested in serving must, at the time of their nomination and election to the Board, reside in or own and operate a business within the Inman Park Neighborhood. Board members are elected to serve for a 3 year term. The Board welcomes nominees with all skill and experience levels.

We are currently in need of nominees with backgrounds in one or more of the following areas: finance/accounting, non-profit management, facilities management, marketing, grant writing and social media expertise. The Trolley Barn is a 501(c)(3) corporation that is operated primarily for the following charitable and educational purposes:

- To lease, preserve, restore, rehabilitate, recondition, and protect the Atlanta & Edgewood Street Railway Company Trolley Car Barn;
- To provide meeting places for charitable, civic, and community organizations and groups; and
- To establish a facility in which to display memorabilia and artifacts of the City of Atlanta and of the area of Inman Park and of the Atlanta & Edgewood Street Railway Company and building.
- To contribute to the historic Inman Park neighborhood.

Anyone interested in serving on the Board should submit the names of their nominees to Thom Abelew at abelewt@bellsouth.net by February 1, 2022. Any questions or inquiries should also be submitted to abelewt@bellsouth.net. Final voting on board membership will take place at the Trolley Barn Annual meeting in March 2022.

If you are new to Inman Park, welcome!
We're so glad you're here.

Please contact the IPNA hospitality chair at
hospitality@inmanpark.org



Also, if you have personal news or a life event to share, the Hospitality Committee would love to hear about it and recognize you in the Advocate.
Get in touch!

Ye Olde Monster Shoppe

Your friendly neighborhood monster-owned gift shoppe!

SHOP LOCAL FOR THE HOLIDAYS!

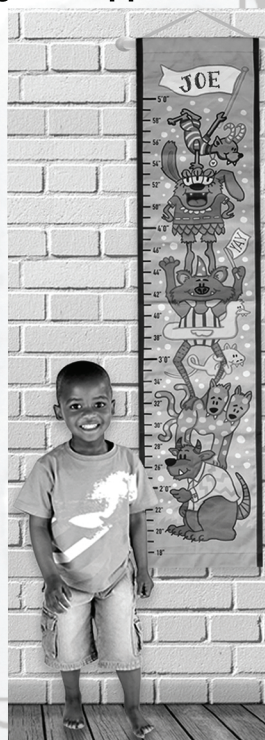
If you live in Inman Park,
use code:
HOWDYNEIGHBOR
at checkout,
and one of our monsters
will drive over and
drop off your order.
NO SHIPPING COSTS!

ROBOT CLEANING CLOTHS

"MADE FOR
EACH OTHER" MUGS

SCRATCH-OFF
LUNCH NOTES

CUSTOMIZED MONSTER GROWTH CHART



• • • • • yeoldemonstershoppe.com • • • • •



BUG BUSTERS

Pest • Termite • Mosquito • Wildlife • www.BugBustersUSA.com

Having some
unexpected
guests for
the winter?



Who Ya Gonna Call?

www.BugBustersUSA.com
770-517-0200

We LIVE, WORK and PLAY in Inman Park



BUY
SELL
RENOVATE
BUILD
INVEST

"We're here to help you with all of your real estate needs!"



BUY | SELL | RENOVATE | BUILD | INVEST



JEFF RAW
REALTOR® / Team Lead
Licensed General Contractor

404 786 6635
jeffraw474@gmail.com
rawrealestategroup.com



Agenda

December 15, 2021

IPNA Meeting • 7:30 p.m.

Location: Zoom

I. Welcome & Introduction of Newcomers

II. Police Officers' Reports

III. Minutes of Last Meeting

IV. Announcements

V. Elected Officials' Reports

VI. IPNA Officers' Reports

A. President

B. Planning

C. Zoning

D. Historic Preservation

E. Public Safety

F. Communications

G. Treasurer

H. Secretary

VII. Committee Reports

VIII. Old Business

IX. New Business

X. Adjourn

***Check inmanpark.org the day of the meeting
for any agenda updates***

Want to be a part of next month's Advocator?

If you have news to share with your neighbors in the January issue of the *Advocator*, please send your submissions to advocator@inmanpark.org before December 20.



Good to Know

Inman Park Neighborhood Association (IPNA) membership:

Inman Park Neighborhood Association (IPNA) membership: Available to those who live within or own property within the boundaries of Inman Park. Membership is \$5 with online registration at inmanpark.org. Membership allows you to vote (see bylaws online for details), gives you access to the directory and makes you eligible for special neighborhood events. In addition to being a member of IPNA, you may register for the Inman Park Security Patrol (IPSP) which staffs off-duty Atlanta Police officers to patrol our neighborhood. There are four levels of commitment beginning at \$50 per year. IPNA meetings are held at 7:30 p.m. on the 3rd Wednesday of each month at the Trolley Barn. IPSP membership is based upon a rolling annual membership term. Your renewal date is one year from your membership date and again every year after that.

Websites

InmanPark.org

InmanParkFestival.org

Facebook.com/InmanPark

Instagram: [@inmanpark](https://www.instagram.com/inmanpark)

Report All Crimes: Call 911

IP Security Patrol: 404-414-7802

L5P Mini-Precinct: 404-658-6782

L5P Business Association

www.little5points.com



Jazzy Pawz
By Andrea

Where your pet
is treated like family

**\$5 neighborhood discount
for mini grooms & full grooms**
*must be booked every 4 weeks
to apply discount

Online booking only
www.jazzypawz.com

245 North Highland Ave. NE
Suite 225


IRON ROOT
studio™



**DISCOVER
YOUR
STRENGTH**

ironrootstudio.com
Kettlebell - Yoga - Group Fitness
840 Dekalb Avenue NE

**Our Covid Protocols Will Take
Your Breath Away...Literally**



We've added numerous safeguards, from simple common sense steps, to high tech state-of-the-art technologies. Several high volume air purifier units filter and kill nearly 100% of pathogens (including this one clearing breath and aerosols from the treatment zone); full room UV-C light; virucidal and bactericidal cold fogging, and more...

For full details go to: shapirodentist.com

**And Always:
Dentistry Without Guilt!**

Richard B. Shapiro, D.D.S.
427 Moreland Ave. Suite 200
404-523-2514



LEIGH HAYS
REALTOR®

SELLING INMAN PORCHES SINCE 1996

BUYING + SELLING

EXPERIENCED WITH
NEGOTIATION IN THE
CURRENT MARKET

STRATEGIC MARKETING
PLAN BACKED WITH
PROFESSIONAL MARKETING

CONTACT ME FOR ALL OF YOUR REAL ESTATE NEEDS
leighhays.atlantafinehomes.com



LEIGH HAYS

c. 404.402.4554
o. 404.874.0300
leighhays@atlantafinehomes.com

Atlanta Fine
Homes

Sotheby's
INTERNATIONAL REALTY

1555 Peachtree Street NE, Suite 100 | Atlanta, Georgia 30309

Atlanta Fine Homes, LLC fully supports the principles of the Fair Housing Act and the Equal Opportunity Act.
Each franchise is independently owned and operated.