



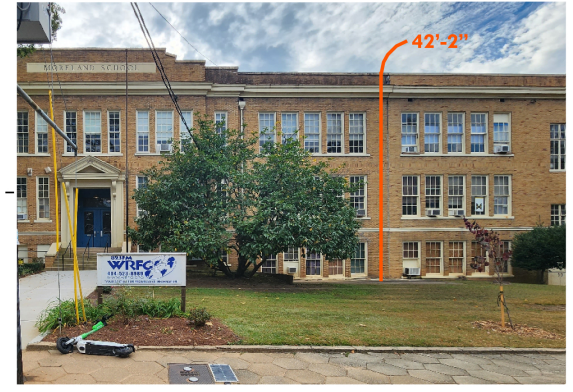
ORIGINAL INDUSTRIAL CORRIDOR BUT NOT SA1
828 RALPH MCGILL BLVD (TF, MIXED-USE)
 - 3-4 STORIES
 - 56FT IN HEIGHT AT ENTRY
 & 51FT AT AVERAGE FRONT GRADE



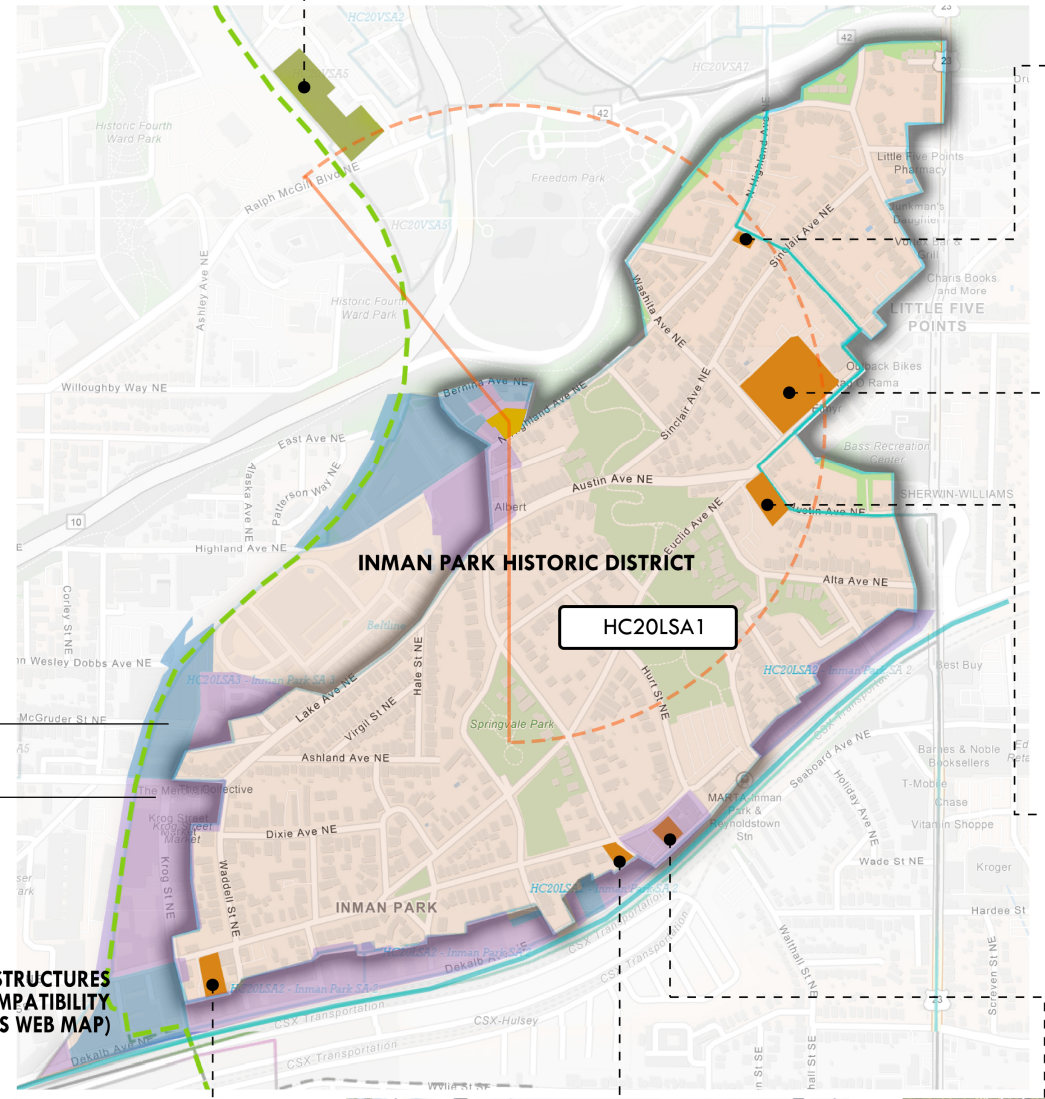
461 NORTH HIGHLAND AVE (APARTMENTS, MULTI-FAMILY)
 - 3 STORIES
 - 35FT IN HEIGHT AT CORNICE/GUTTER
 & 40.5FT TOP OF PARAPET



1080 EUCLID (BASS LOFTS, MULTI-FAMILY)
 - 3 STORIES
 - 45FT IN HEIGHT



1083 AUSTIN AVE (L5PCC, MIXED-USE)
 - 2-3 STORIES
 - 42FT IN HEIGHT

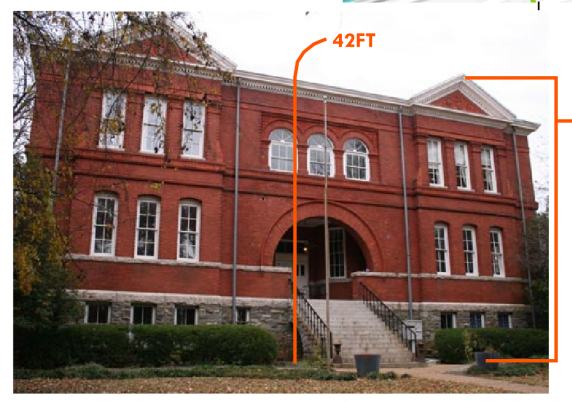


*NOTE: ALMOST ALL INDUSTRIAL & COMMERCIAL IS OUTSIDE OF SA1

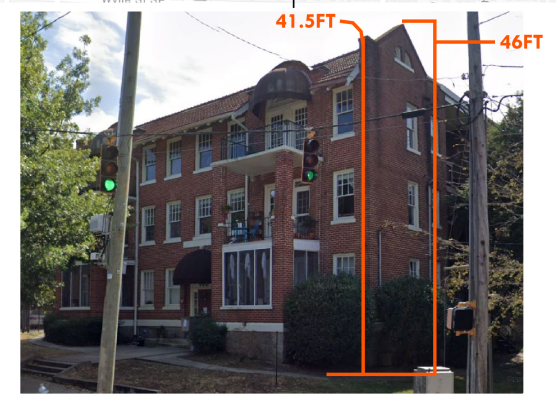
BLUE IS INDUSTRIAL

PURPLE IS COMMERCIAL

MAP OF ONTRIBUTING STRUCTURES HEIGHT COMPATIBILITY (MAP FROM ATL ARCGIS WEB MAP)



729 EDGEWOOD AVENUE NE (OLD SCHOOL, MULTI-FAMILY)
 - 3 STORIES
 - 42FT IN HEIGHT (TO GUTTER) & 48-49FT TO MAIN GABLE RIDGE



90 ELIZABETH ST (APARTMENTS, MULTI-FAMILY)
 - 3 STORIES
 - 41.5FT IN HEIGHT & 46FT TO GABLE RIDGE



999 EDGEWOOD AVE (IPMC, MIXED-USE OFFICE/EDUCATION)
 - 2.5 STORIES
 - 25'-11" FT IN HEIGHT

THE CORNER
 Type III HP Application
 320 North Highland Avenue,
 Atlanta, Georgia, 30307

01	TYPE III HP SUBMISSION	09.01.2022
No.	REVISIONS/SUBMISSIONS	Date
Seal		

NOT FOR CONSTRUCTION

This drawing is the property of Jones Pierce Architects, Inc. and is not to be reproduced or copied in whole or in part. It is not to be used on any other project, and is to be returned upon request. Scales as stated hereon are for reference only, as normal reproduction processes may alter the accuracy of original drawings. Jones Pierce, Architects, Inc. © 2022

CONTRIBUTING STRUCTURES ANALYSIS

Project No. 22016 Drawing No.

Date 08.11.2022 Scale NTS

A0.3